

Arimidex is prescribed to treat certain types of breast cancer in adult females who've gone through menopause. The drug works by lowering estrogen levels in the body. However, some bodybuilders .



💊💊💊 VISIT OUR SHOP 💊💊💊

ARIMIDEX: a new oral, once-a-day aromatase inhibitor - PubMed



Last updated on April 26, 2023. Official answer by Drugs The protective effects of Arimidex continue even after you stop taking it, so long as you have been taking it for around five years.

Exemestane (Aromasin) in Bodybuilding - Evolutionary



June 14, 2016 by John Doe Arimidex (Anastrozole) is what is classified as an aromatase inhibitor. Its original designed use was to treat breast cancer in women by lowering estrogen. It was eventually discovered that Arimidex could benefit bodybuilders by blocking estrogen formation or lowering already existing levels.

Arimidex and Dosage: Strength, Form, When to Use, and More - Healthline



Drug Images What is Arimidex? Arimidex is a brand-name prescription medication. It's used to treat breast cancer in women who've gone through menopause. Specifically, Arimidex is approved to.

What happens when you stop taking Arimidex? - Drugs



47 year old male using ProHormone as Base, w/ Dianabol at 25 mgs plus Arimidex 0.25 mgs, but I don't understand this response, please help-- newjack777 Jun 6, 2023

Arimidex: Side Effects, Alternatives, Dosage, Cost, and More - Healthline



1 History 2 Science 3 Bodybuilding 4 Arimidex vs Nolvadex 5 Arimidex vs Letrozole 6 Alternatives 7 Side Effects 8 Dosages 9 Half-Life 10 Trade Names 11 Buying 12 Conclusion 13 Pictures History Arimidex is the trade name used by the pharmaceutical company AstraZeneca, for a drug called

Anastrozole.

Arimidex- What's The Half-Life??? - EliteFitness



The elimination half-life of ARIMIDEX in humans ranged from 30 to 60 h. Consistent with the long plasma half-life, steady state plasma concentrations were 3-4-fold higher than plasma concentrations observed after single administration of 1, 3, 5, or 10 mg doses.

Arimidex (Anastrozole) For Men | MuscleChemistry



However, the context that an anabolic steroid using athlete or bodybuilder is slightly different, and this is what any anabolic steroid user is most concerned with: the proper Arimidex doses for Estrogen control, how to utilize Arimidex doses, and the different manners in which Arimidex doses can be used.

Arimidex Dosage - Steroidal



Since Exemestane is so potent, most bodybuilders use a 12.5mg dose of Exemestane every other day since the half-life is 24 hours. Sep 10, 2022 · Here is our article about Aromasin Vs Arimidex. Some people will claim that Aromasin is "less harsh on lipids" than Arimidex. . Understanding Aromasin and Arimidex in Bodybuilding

Arimidex Half-life | Professional Muscle - Bodybuilding Forum



The Science Behind Arimidex Half-Life in Bodybuilding 25mg every other day, and sometimes even less frequently, especially considering the half-life of Letrozole is 2 - 4 days. 0 L). 8 h, which was similar to that observed in postmenopausal women treated with anastrozole for breast cancer.

Anastrozole in Bodybuilding: Uses, Side Effects, and Dosage



Summary Some bodybuilders take Arimidex to reduce the side effects of anabolic steroids. The drug is a breast cancer treatment that lowers estrogen levels and should not be used for other means. .

Arimidex and bodybuilding. What to know - Medical News Today



Drug Images What is Arimidex? If you have breast cancer, your doctor may recommend Arimidex as a treatment option for you. Arimidex is a prescription medication used in females* who've gone.

Proviron (Mesterolone) - Evolutionary



Anastrozole is a synthetic nonsteroidal aromatase inhibitor. It prevents conversion of androgens to estrogens, leading to decreased estrogen levels. It's typically used in bodybuilding to reduce estrogen levels and promote higher testosterone levels. Find out how anastrozole is used by bodybuilders and what it does.

Understanding Aromasin and Arimidex in Bodybuilding



Published on November 19, 2021 Contents hide What Is Arimidex? Overview of Benefits and Side Effects Benefits Side Effects Why Do Bodybuilders Use Arimidex? Arimidex Benefits for Men Prevents Gynecomastia Might Treat Infertility Might Treat Erectile Dysfunction Arimidex Side Effects Arimidex Dosage & Cycles Frequently Asked Questions

Arimidex half life bodybuilding. The Science Behind Arimidex Half-Life .



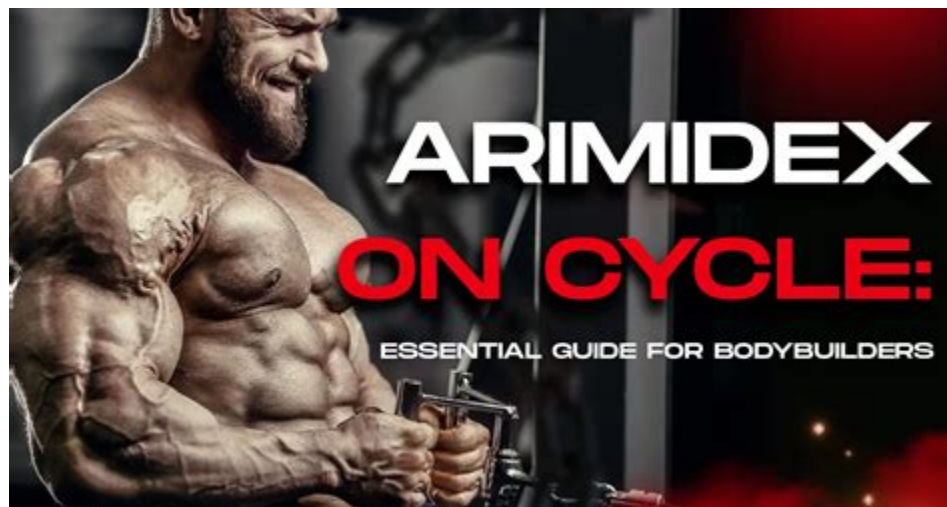
A typical Arimidex protocol in bodybuilding would involve starting with a low dose of the medication and gradually increasing it as needed. For example, a PRO athlete might start with 0.25mg of Arimidex per day and increase the dose to 0.5mg or 1mg if necessary. The exact dosage will vary depending on the individual's response to the .

Arimidex in Bodybuilding — All You Need to Know - anytime



#1 I have been incorrectly telling people adex has a halflife of about 1 day, in fact it has a halflife of 2 days in males, sorry! It's still accurate that aromasin has a halflife of only 9 hours in males. Sorry for the confusion, I was sure I read a study showing it was shorter but I think I had it mixed up with something else.

Arimidex on Cycle: Essential Guide for Bodybuilders



The half life of proviron is around 12 hours. A good recommended dosage is 25-75mg per day; though, I have personally never exceeded 50mg a day in a stack. The detection time is 5-6 weeks. so those that are tested often would be wise to avoid this compound. Females are not advised to take proviron because of its DHT properties.

Arimidex Bodybuilding | Dosage & Benefits | Nanotech Project



Determining the optimal dosage of Arimidex in a bodybuilding context depends largely on the type and amount of steroids used. The more androgenic the steroid, the more likely it is to convert into estrogen, leading to higher potential estrogenic side effects. . In terms of half-life, Arimidex and Letrozole are fairly similar, with a half-life .

Arimidex: Side effects, dosage, uses, and more - Medical News Today



Illegally, Arimidex may be used by bodybuilders to block estrogen. Arimidex may help prevent side effects such as gynecomastia (male breast enlargement) from developing due to the aromatization of anabolic steroids.

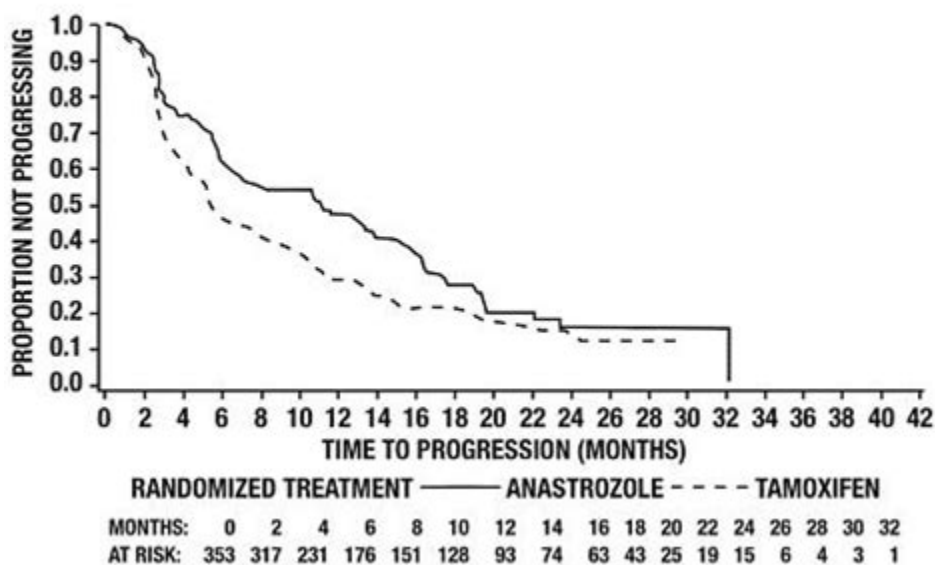
How do I take Arimidex on a cycle and how much? - Drugs



The half-life of Aromasin is only about 9 hours, and clears quickly. However, because of how effective Exemestane is at eliminating Aromatase enzymes (80-90% after administration), estrogen levels will remain low up to 72 hours after a single dose of 25mg. This is why aromasin is very effectively dosed every other day.

A Comprehensive Guide to Understanding Arimidex Half-Life Time and Its .

Figure 1 - Kaplan-Meier probability of time to disease progression for all randomized patients (intent-to-treat) in Trial 0030



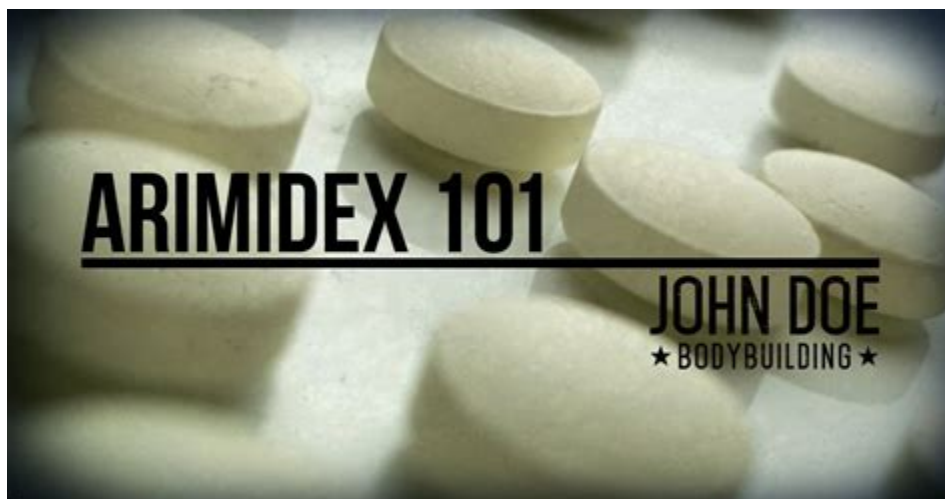
1 History 2 Science 3 Use in Bodybuilding 4 Aromasin vs. Arimidex 5 Aromasin vs. Letrozole 6 Side Effects 7 Dosages 8 Half-Life 9 Where to buy 11 Videos 12 Pictures History Aromasin is the trade name for Exemestane, a drug used to treat breast cancer in women. Similarly to arimidex, it is member of the aromatase inhibitor class of drugs.

Aromasin (Exemestane) - Evolutionary



(Arimidex) or letrozole (Femara), The half-life of Verzenio is about 18. Due to this, the dosages are very different. High estrogen levels can cause side effects such as gynecomastia (unusual breast gland enlargement Jun 1, 1995 · The elimination half-life of ARIMIDEX in humans ranged from 30 to 60 h.

Arimidex 101 - John Doe Bodybuilding



Anastrozole has a half life of about two days. For this reason, when use is ongoing, on taking a dose of Arimidex the user will have in his system not only the dose that he just took, but also about another two days' worth that has built up in his system. If just starting usage, however, there is no such buildup and effect will be less.

- <https://groups.google.com/g/38musclebrain50/c/-zrWTkk2CMI>
- https://drive.google.com/file/d/1LxRyZp-5ZL_bdNEVDZ8RITkXs8q2BNLo/view?usp=sharing
- <https://groups.google.com/g/sportfaza/c/MLOIbSb3FfE>