



# Genotropin Pen Left Out Of Fridge - Genotropin Subcutaneous: Uses, Side Effects, Interactions . - WebMD

One of the first questions asked by adults who discover they have growth hormone deficiency (GHD) is how quickly they can expect Genotropin results. Reviews, before and after pictures, and a timeline of when benefits occur are included in this analysis of HGH therapy. The Genotropin reviews provided by our clients speak to the high-quality nature of Pfizer's brand of human growth hormone .

\*\*\*\*\*

✓ **Our AAS Shop is a leading online store providing a wide range of high-quality anabolic steroids, performance-enhancing drugs, and related products. We offer diverse options, including injectable and oral steroids, PCT (Post Cycle Therapy) products, growth hormone, peptides, fat burners, and vitamins to meet all your fitness and performance needs.**

✓ **All our products are sourced from reputable manufacturers, ensuring 100% authenticity. Whether you're focused on bulking, cutting, or strength-gaining, we provide a variety of steroids for different purposes. Our PCT products are specifically designed to aid in recovery after a steroid cycle.**

✓ **Our customer service team is available to address any questions and ensure a smooth shopping experience. Additionally, we offer fat burners and vitamins to support your overall health and wellness goals. With competitive prices and fast shipping, Anabolic Steroid Shop is your go-to source for all your fitness and performance-enhancing needs.**

✓ **CLICK HERE TO SHOP ONLINE → <https://bit.ly/3Gf4VHQ>**

\*\*\*\*\*

## PDF Instructions using for GENOTROPIN Pen



What You Will Need GENOTROPIN PEN 12 12 mg two-chamber cartridge of GENOTROPIN Alcohol swab 29-gauge, 30-gauge, or 31-gauge Becton Dickinson pen needle Proper disposal container for used needles Components of the GENOTROPIN PEN 12 Before You Begin

# PDF CONSUMER MEDICINE INFORMATION - Medsafe

## NEW ZEALAND CONSUMER MEDICINE INFORMATION

### EPIPEN®

#### Adrenaline (epinephrine)\* 300 µg/0.3 mL Auto-Injector

\* In some countries, adrenaline is known as epinephrine



#### What is in this leaflet

This leaflet answers some common questions about EPIPEN Adrenaline Auto-Injector. It does not contain all the available information. It does not take the place of talking to your doctor or pharmacist.

All medicines have risks and benefits. Your doctor or pharmacist has weighed the risks of you receiving EPIPEN against the benefits this medicine is expected to have for you.

If you have any concerns about receiving this medicine, talk to your doctor or pharmacist before there is a situation where EPIPEN is needed.

Please read this leaflet carefully before an emergency arises.

Keep this leaflet safely, with the EPIPEN Auto-Injector. You will probably want to read it again.

#### What EPIPEN is used for

EPIPEN is only to be used for the immediate EMERGENCY TREATMENT of a SEVERE ALLERGIC REACTION (also known as ANAPHYLAXIS). Your doctor or pharmacist will explain what this is like, so that you know when you must use EPIPEN.

EPIPEN is used to treat people who have a severe allergic reaction caused by, for example, hypersensitivity to

- food
- medicines
- stinging insects
- insect bites
- latex or
- other allergens, possibly unidentified.

See Side effects for information regarding allergy to sodium metabisulfite.

**Avoidance of known allergens is most important in preventing severe allergic reactions.**

A severe allergic reaction, otherwise known as anaphylaxis, is overwhelming and life-threatening.

It affects the whole body, in particular the

- heart and blood circulation.

This may cause, for example, low blood pressure and collapse, or abnormal heart beat or function.

- air passages and lungs.

This causes difficulty in breathing, with noisy wheezing or gasping, possibly with sneezing and a very runny nose.

- stomach and bowels.

This may cause nausea, vomiting, diarrhoea and abdominal cramps, often severe.

- skin (very common).

This causes flushing, itching, skin rash, hives or swelling, which may be widespread or in one part of the body.

- brain.

There may be fits or confusion due to lack of oxygen.

Usually several parts of the body are affected. The patient feels extremely unwell.

It is important to act quickly to treat a severe allergic reaction.

The adrenaline in EPIPEN treats allergic emergencies. It

- shrinks abnormally wide blood vessels and
- makes the heart beat strongly.

This helps improve the very low blood pressure and poor circulation that occur in a severe allergic reaction.

Adrenaline also

- relaxes the lungs. This eases breathing and lessens wheezing.
- helps stop -swelling, for example, of the face and lips -skin rash and/or -itching.

The EPIPEN Auto-Injector is intended for use in people who have been assessed and advised by their doctor as needing an EPIPEN Auto-Injector to treat their severe allergic reaction and who

- weigh more than 30 kg, and
- are having a severe allergic reaction.

**Note: Selection of the appropriate dosage is determined according to patient body weight.**

For a person who weighs from 15kg up to 30kg, the doctor may assess their severe allergic reaction as needing the larger dosage of adrenaline as provided by an EPIPEN Auto-Injector. (The EPIPEN Jr. Auto-Injector delivers a smaller amount of adrenaline).

If you have any questions about this, talk to your doctor.

EPIPEN

- provides convenient first aid


Side effects such as severe or recurring headaches, problems with your vision, nausea or vomiting, extreme tiredness, change to thirst or appetite, increased need to pass urine, limping, discomfort.

## How To Take | Genotropin® (somatropin) For Injection | Safety Info




⌘ You should store the GENOTROPIN cartridges and GENOTROPIN Pen in the refrigerator (36¼F to 46¼F) but not in the freezer. . ⌘ If the GENOTROPIN cartridges, or Pen, are left out of the refrigerator, contact your health care provider or pharmacy ⌘ The GENOTROPIN MiniQuick can be stored without refrigeration at room temperature (77¼F or .

# PDF Genotropin Patient Brochure




**Genotropin Mixer<sup>®</sup>**  
Growth Hormone Reconstitution Device

How to use your GENOTROPIN Mixer<sup>®</sup>

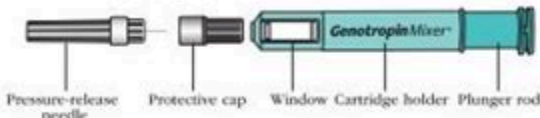


**Genotropin<sup>®</sup>**  
*Somatropin (rDNA origin) for injection*

[www.genotropin.com](http://www.genotropin.com)




1-800-645-1280



Since your medicine comes in a 2-chamber cartridge, it needs to be mixed. The GENOTROPIN Mixer is a device to mix your drug. To inject your medicine, you will need the following:

- GENOTROPIN Mixer with pressure-release needle
- One cartridge containing drug and liquid
- Insulin syringe for injection
- Alcohol swab
- 
- Container for proper disposal



- 1 Before you begin**


  - First, wash and dry your hands.
  - Unscrew the dark green plunger rod from the light green holder of the GENOTROPIN Mixer.
  - Remove the cartridge of drug from its package.
- 2 Mixing the drug**

  - Put the cartridge into the GENOTROPIN Mixer with its metal/rubber tip facing into the open end of the holder. You should be able to see the metal/rubber tip. It should stick out from the opening at the front of the holder.
  - Screw the plunger rod back into the holder. This will mix the drug and the liquid.

**Caution:** Look in the window of the GENOTROPIN Mixer to make sure the medicine is completely dissolved. If it is not, gently tip the GENOTROPIN Mixer from side to side. Do this until the liquid is clear. Do not shake!

Look carefully at the now-mixed medicine. Nothing should be floating in it, and it should be clear. If the medicine is still cloudy, do not inject it. Take out the cartridge and return it to your supplier. Start over again with a new cartridge.



- 3 Releasing pressure**

  - Disinfect the metal/rubber tip of the cartridge by wiping it with an alcohol swab.
  - Remove the cap from the pressure-release needle. Do not touch the needle. With the metal/rubber tip of the cartridge pointing up, pierce the rubber tip with the needle. This will release extra pressure in the cartridge. Be sure the cartridge is upright when pierced. This is so the medicine doesn't spill out. (Only do this step the first time you use a new cartridge.)
  - Remove the needle from the cartridge and replace its cap. Put it in a proper disposal container.

Indicated for the treatment of growth failure associated with Turner syndrome (TS). Indicated for growth hormone replacement therapy in adults with growth hormone deficiency (GHD) of either childhood- or adult-onset etiology. GHD should be confirmed as appropriate. Please see full Prescribing Information for Genotropin.

## Your pen at home or away. - Norditropin



GENOTROPIN safely and effectively. See full prescribing information for GENOTROPIN .  
GENOTROPIN (somatropin) for injection, for subcutaneous use Initial U. S. Approval: 1987 -----  
RECENT MAJOR CHANGES----- Contraindications (4) 12/2016 Warnings and Precautions, Acute  
Critical Illness (5. 1) 9/2016

## Accidentally left HGH out overnight. Still good? - Steroid . com



No a All unused Norditropin ® products must be refrigerated (36°F to 46°F) prior to first use. Do not freeze and avoid direct light. After first injection, Norditropin ® pens can either be stored outside of the

refrigerator (up to 77°F) for use within 3 weeks, or in the refrigerator (between 36°F and 46°F) for use within 4 weeks.

## Genotropin Uses, Side Effects & Warnings - Drugs. com



Genotropin pens and cartridges are colour coded to help you match the cartridge to the corresponding pen. You must only use: . Take Genotropin out of the refrigerator approximately 1/2 hour before your injection. This will bring it to room temperature (about 25°C). It is more comfortable to inject at this temperature.



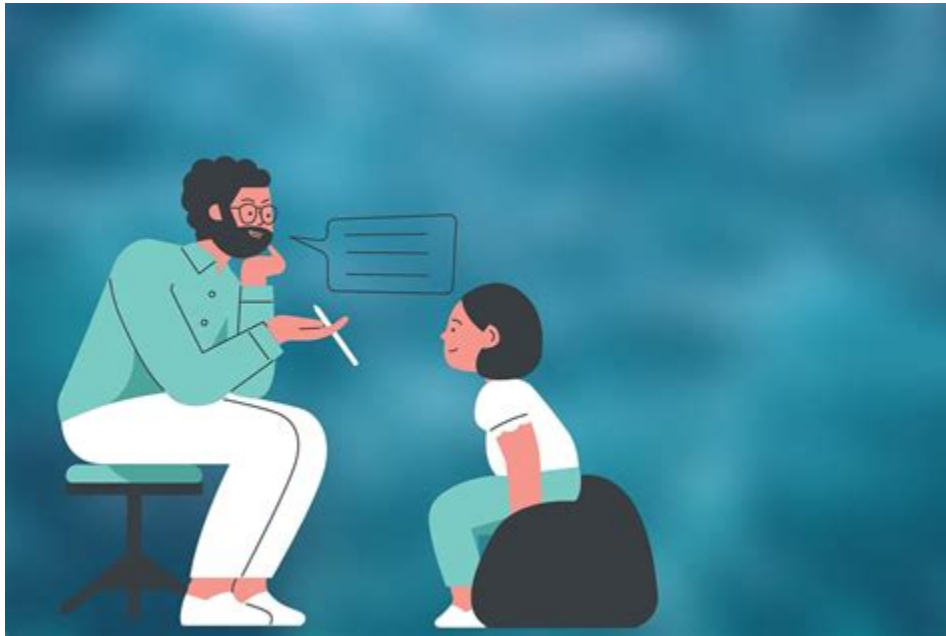
## GENOTROPIN MIXER with a pressure-release needle - Pfizer



GENOTROPIN is used for children and adults who have a genetic disorder called Prader- Willi syndrome (symptoms include intellectual impairment, uncontrollable urge to eat). However, your doctor may prescribe GENOTROPIN for another purpose. Ask your doctor if you have any questions about why GENOTROPIN has been prescribed for you. Before you use



## Tips for Storing Norditropin HGH at Home and While Traveling



These highlights do not include all the information needed to use Genotropin safely and effectively. See full prescribing information for Genotropin. . GENOTROPIN PEN delivery device (2. 3) •Injection sites should always be rotated to avoid lipoatrophy (2. 3) -----DOSAGE FORMS AND STRENGTHS----- GENOTROPIN lyophilized powder in a two-chamber .



## CRS Report for Congress

### Food and Drug Administration (FDA): Overview and Issues

Erin D. Williams  
Specialist in Public Health and Bioethics  
Domestic Social Policy Division

#### Summary

The Food and Drug Administration (FDA) is the agency within the Department of Health and Human Services (HHS) that regulates human and animal drugs, medical devices, biologics, and most foods. This report describes FDA, surveys agency-related issues Congress faces, and cites CRS reports where readers can find more information.

#### FDA Overview

FDA is an agency within HHS that regulates a wide range of products valued at more than \$1 trillion. (See **Table 1.**) The agency is responsible for the *safety* of most foods (human and animal) and cosmetics, and it regulates both the *safety* and the *effectiveness* of human drugs, biologics (e.g., vaccines, blood and blood components), medical devices, and animal drugs. In many cases, its responsibilities abut those of other agencies. (See **Table 1.**) In such cases, interagency agreements may define the regulatory boundaries.


The primary law authorizing FDA activities is the Federal Food, Drug, and Cosmetic Act (FFDCA; 21 USC Chapter 9). (See **Table 2.**) FDA is also responsible for implementing provisions in other laws, most notably the Public Health Service Act (PHSA; 42 USC Chapter 6A). For example, FDA's authority to regulate most human biologics flows both from the PHSA (§351) and from the FFDCA. (See **Table 2.**)

FDA has three offices that perform agency-wide functions. The Office of the Commissioner conducts overall agency coordination. The Commissioner, FDA's top official, requires Senate confirmation. The Office of Chief Counsel handles the agency's legal needs. FDA's largest office, the Office of Regulatory Affairs (ORA), handles FDA's inspection and enforcement activities. It employs about one-third of the agency's personnel.

FDA's product-specific regulatory responsibilities are handled by five centers: the Center for Biologics Evaluation and Research, the Center for Devices and Radiological Health, the Center for Drug Evaluation and Research, the Center for Food Safety and


Genotropin is a human growth hormone analog. It's a biological product that must be kept refrigerated and stored under certain conditions. Learn more about storing your injections properly!

# Genotropin® (somatropin) For Injection Official Site | Safety Info




**Genotropin Mixer®**  
Growth Hormone Reconstitution Device

How to use your GENOTROPIN Mixer®




**Genotropin**  
*(somatropin, rDNA origin) for injection*

[www.genotropin.com](http://www.genotropin.com)




1-800-645-1280



Since your medicine comes in a 2-chamber cartridge, it needs to be mixed. The GENOTROPIN Mixer is a device to mix your drug. To inject your medicine, you will need the following:

- GENOTROPIN Mixer with pressure-release needle
- One cartridge containing drug and liquid
- Insulin syringe for injection
- Alcoholic swab
- Container for proper disposal

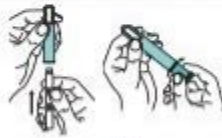

- 1 Before you begin**


  - First, wash and dry your hands.
  - Unscrew the dark green plunger rod from the light green holder of the GENOTROPIN Mixer.
  - Remove the cartridge of drug from its package.
- 2 Mixing the drug**

  - Put the cartridge into the GENOTROPIN Mixer with its metal/rubber tip facing into the open end of the holder. You should be able to see the metal/rubber tip. It should stick out from the opening at the front of the holder.
  - Screw the plunger rod back into the holder. This will mix the drug and the liquid.

**Caution:** Look in the window of the GENOTROPIN Mixer to make sure the medicine is completely dissolved. If it is not, gently tip the GENOTROPIN Mixer from side to side. Do this until the liquid is clear. **Do not shake!**

Look carefully at the now-mixed medicine. Nothing should be floating in it, and it should be clear. If the medicine is still cloudy, do not inject it. Take out the cartridge and return it to your supplier. Start over again with a new cartridge.



- 3 Releasing pressure**

  - Disinfect the metal/rubber tip of the cartridge by wiping it with an alcoholic swab.
  - Remove the cap from the pressure-release needle. Do not touch the needle. With the metal/rubber tip of the cartridge pointing up, pierce the rubber tip with the needle. This will release extra pressure in the cartridge. Be sure the cartridge is upright when pierced. This is so the medicine doesn't spill out. (Only do this step the first time you use a new cartridge.)
  - Remove the needle from the cartridge and replace its cap. Put it in a proper disposal container.

Tell your or your child's healthcare provider if you or your child has any new abdominal pain, loss of fat and tissue weakness in the area of skin you inject, increase in phosphorus, alkaline phosphatase, and parathyroid hormone levels in your blood. ® include: injection site reactions and rashes, and headaches.

## How to use the pen video - genotropin. pfizerpro. com



10% Off the Ultimate cooling solution for your medication! Enter your email and get 10% off when you purchase one with us! Norditropin (Somatropin) is a man-made human growth hormone that's very sensitive to light and temperature. Refrigeration and storage conditions are essential for its effectiveness and safety for use

## Genotropin Results Timeline | Before & After Pics of Patients - Medzone



GENOTROPIN is a prescription product for the treatment of growth failure in children who do not make enough growth hormone on their own. This condition is called growth hormone deficiency (GHD).

Please see Important Safety Information on pages 5, 6, 14, and 15 and accompanying full Prescribing Information in pocket. 2

## Why you Should Store Genotropin (Somatropin) in the Fridge



Also report any signs of lung infection, such as fever, cough, or trouble breathing. Somatropin may increase your risk of getting a tumor or cancer. Discuss the details and the risks and benefits .

## Genotropin Advanced Patient Information - Drugs. com





Medically reviewed by Drugs. com on Mar 10, 2022. Written by Cerner Multum. Uses Side effects Warnings Before taking Dosage Interactions What is Genotropin? Genotropin is a form of human growth hormone important for the growth of bones and muscles. Genotropin is used to treat growth failure in children and adults who lack natural growth hormone.

## **Genotropin Drug / Medicine Information - News-Medical. net**



Store this medicine in the refrigerator, away from direct light. Do not freeze or shake. Store the unopened Norditropin® FlexPro pen in the refrigerator, away from direct light. Do not freeze. You may also keep the opened Norditropin® FlexPro pen in the refrigerator for up to 4 weeks or at room temperature for up to 3 weeks.

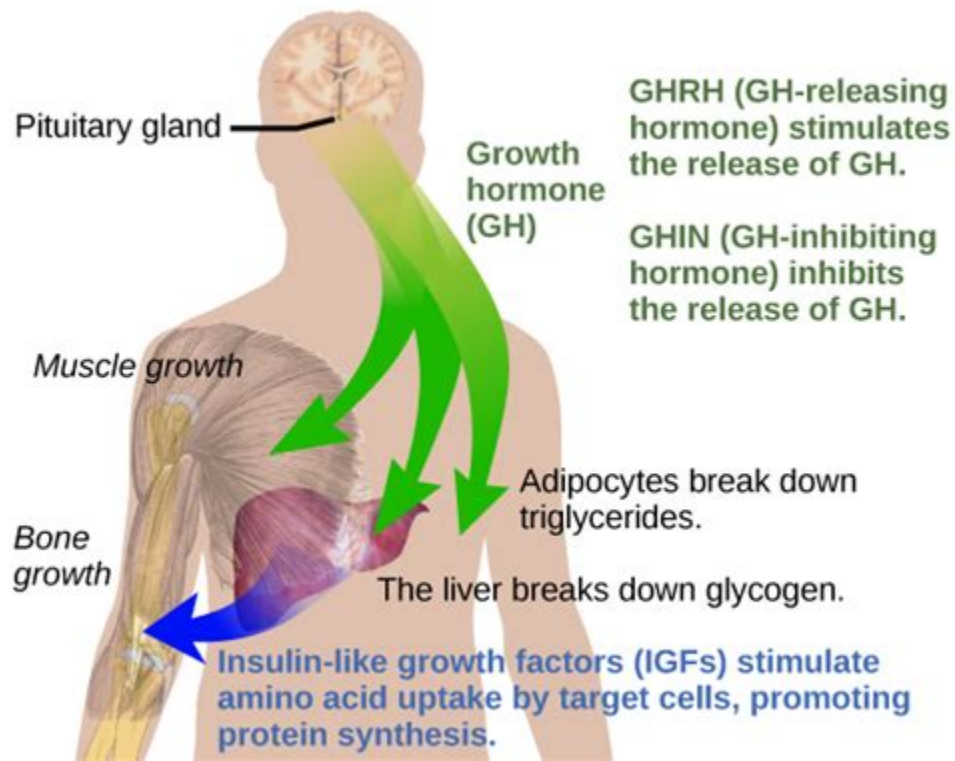
**PDF HIGHLIGHTS OF PRESCRIBING INFORMATION GENOTROPIN - Food and Drug .**



07-19-2009, 09:17 AM #1 kaptainkeezy04 Anabolic Member Join Date Sep 2004 Location Dallas Posts 2,376  
Accidentally left HGH out overnight. Still good? I accidentally left my HGH out of the refrigerator for about 18 hours, because I went out during the day, and didnt come back until the next morning. It is Genotropin. Is it any good still?



## PDF Pediatric Growth Hormone Deficiency and Growth Hormone . - Genotropin



1 injection needle. A needle for injection is provided with each device. If you need additional needles, ask your healthcare provider for a 29 gauge (29 G), 30 gauge (30 G), or 31 gauge (31 G) Becton Dickinson pen needle. 1 sharps disposal container (not included). See "Throwing away (disposing of) your GENOTROPIN MINIQUICK and needles" in Step 12.

## Genotropin (somatropin (rbe)) medicine information | myVMC



1 Getting Started Parts of the GENOTROPIN Pen Metal Indicative front part scale Plunger rod window Plastic body Dose display Injection button Needle guard mg 12 mg Outer needle cover Inner Needle needle cap Cartridge window Front cap Clip on panel Red release button Cartridge Rubber stopper

## Genotropin Pen® 12 - Pfizer



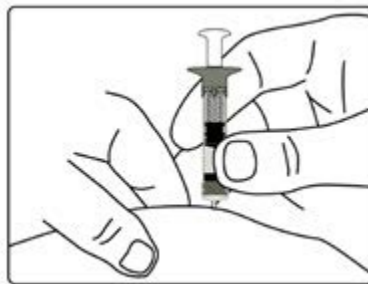
Withdraw the needle quickly, by pulling it straight out, and apply pressure over the injection site with a dry gauze pad. Discard the needle in a proper disposal container. The site of the injection should be changed each day. **STORING THE GENOTROPIN MIXER** The GENOTROPIN MIXER with cartridge must be stored in a refrigerator at 2° to 8°C

## Frequently Asked Questions | Norditropin® (somatropin) injection



In studies of GENOTROPIN in children with GHD, side effects included injection site reactions, such as pain, redness/swelling, inflammation, bleeding, scarring, lumps, or rash. Other side effects were fat loss, headache, blood in the urine, low thyroid activity, and mildly increased blood sugar.

### GENOTROPIN® Instructions For Use (somatropin) | Pfizer Medical .



The medicine mixes inside the pen—no vials to mix. The dose can be dialed back if needed without wasting any medicine. An optional needle guard hides the needle and keeps the pen stable while injecting. Refrigerate between 36°F to 46°F. Pen caps and covers can be customized with colors and designs.

- <https://gamma.app/public/Deca-Eq-And-Sustanon-Cycle---Deca-vs-EQ-Which-is-Better---Max-Hea-7a72qlcd70b8hdd>
- [https://groups.google.com/g/aasguide/c/t\\_h5MnZNF30](https://groups.google.com/g/aasguide/c/t_h5MnZNF30)
- [https://hub.docker.com/r/petrsidorovbz/proviron\\_capsule\\_price](https://hub.docker.com/r/petrsidorovbz/proviron_capsule_price)