



# Test Enanthate 250 Half Life - Testosterone Enanthate Cycle Guide - Steroid Cycles

Shelf Life - Test Enanthate. Thread starter AAAColumbo; Start date Oct 8, 2002; A. AAAColumbo New member. Oct 8, 2002 #1 Hey bros. quick question, how long does Test Enanthate usually last until it goes bad. I ask this question because I plan on going South, and maybe to stock up for 2 cycles. . nothing more cause I don't want to get busted. Thanks.

\*\*\*\*\*

✓ **Our AAS Shop is a private online store specializing in high-quality anabolic steroids, performance-enhancing drugs, and related products. We offer a diverse range, including injectable and oral steroids, PCT (Post Cycle Therapy) products, growth hormone, peptides, fat burners, and vitamins, catering to all fitness and performance needs.**

✓ **Our products, sourced from reputable manufacturers, are 100% genuine and tailored for various purposes such as bulking, cutting, and strength-gaining. Our PCT products aid in post-cycle recovery.**

✓ **Our customer service team is available to address any queries, ensuring a smooth shopping experience. Additionally, we provide fat burners and vitamins to support overall health and wellness goals. With competitive prices and fast shipping, Anabolic Steroid Shop is your reliable source for fitness and performance-enhancing needs, with the added benefit of complete privacy.**

✓ **VISIT OUR STORE → <https://cutt.ly/pwIKH0Xk>**

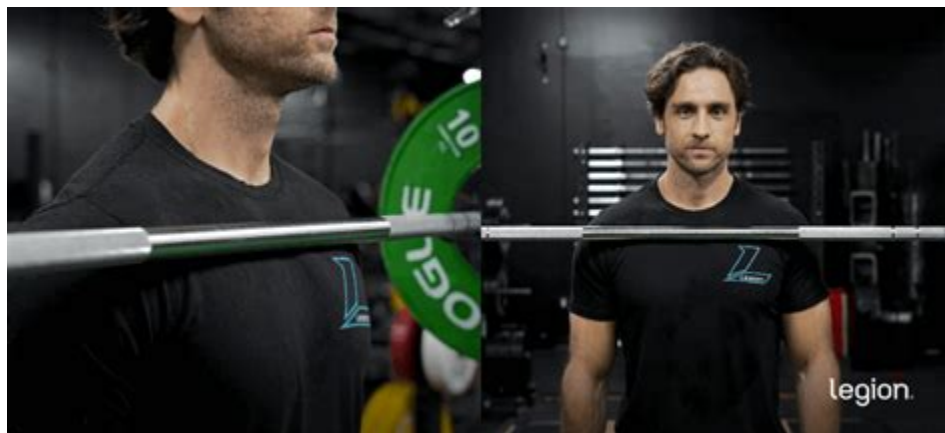
\*\*\*\*\*

## Test Enanthate Half-life - Medical Health Authority



There is considerable variation in the half-life of unbound testosterone, ranging from 10 to 100 minutes. Esters are attached to the testosterone molecule by a process called hydrolysis. Esters are essentially a class of organic compounds that react with water to produce alcohols and organic or inorganic acids.

## Test Enanthate: ACTUAL Half-Life | IronMag Bodybuilding Forums



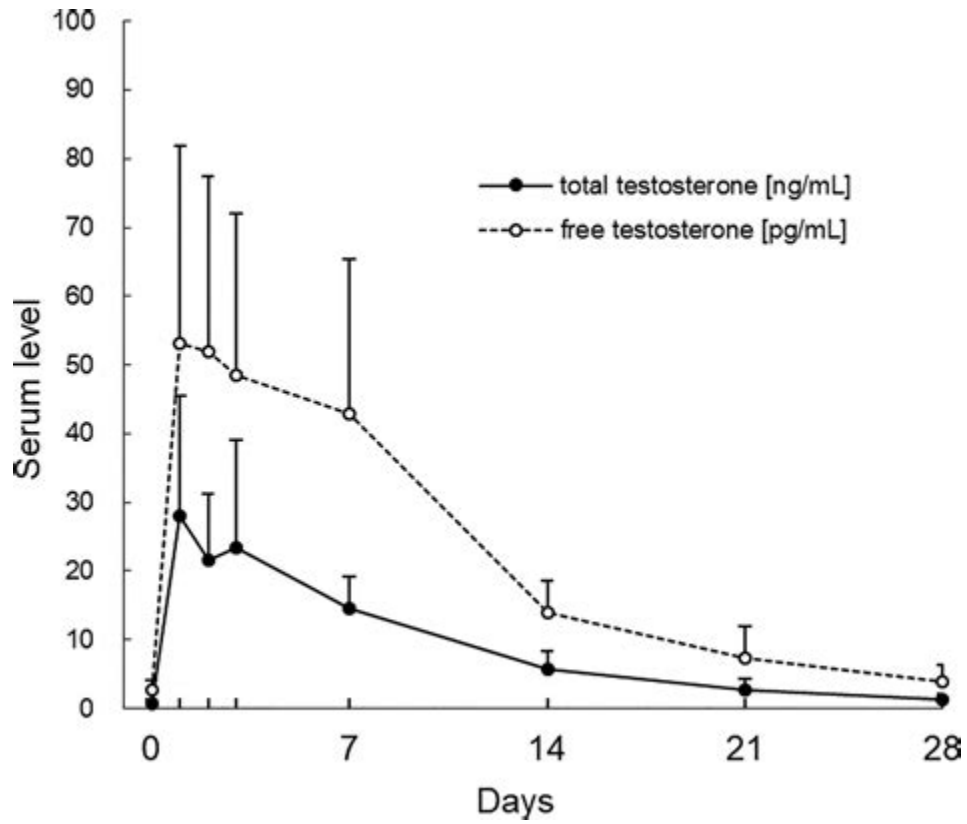
It has a half life of about 8 to 10 days and is a slow release testosterone steroid used in injectable form either for performance enhancement or as a TRT. Testosterone Enanthate Cycle Guide

## Shelf Life - Test Enanthate | EliteFitness. com Bodybuilding Forums



What is Test Enanthate? Test Enanthate, or "Test E," is also an injectable form of testosterone, but with a slightly shorter ester attached to its molecular structure. This means that it has a shorter half-life than Test C, typically around 10 days. Test E is often used in TRT protocols and is also popular with bodybuilders looking to bulk up.

## Pharmacokinetics of testosterone - Wikipedia



Pharmacokinetics of testosterone The pharmacology of testosterone, an androgen and anabolic steroid (AAS) medication and naturally occurring steroid hormone, concerns its pharmacodynamics, pharmacokinetics, and various routes of administration .

## Public Lab: Print



Each regimen was separated by at least 6 months, and the next one was not initiated until testosterone decreased to hypogonadal levels. Serum levels peaked at approximately one month and were sustained in the normal range for four to five months with either 600 mg dose and for 6 months with the 1,200 mg dose. The estimated half-life was 2.5 months.

## Test Enanthate - steroid. com



Half-Life: Usually falls within the range of 8-12 days. Duration in System: Given its longer half-life, cypionate stays active in your body for an extended period, often up to 3-4 weeks. As a result, users enjoy more time between necessary injections and often report a more consistent hormonal profile.

Testosterone Enanthate:

## 250mg of test enanthate can i stop now? - EliteFitness



Test-Enanthate carries a half-life of approximately 11 days while Testosterone-Cypionate has a half like of approximately 12 days. Administration of Test Enanthate As a long ester testosterone, Test-Enanthate should be injected once per week at minimum; one injection per week will keep your blood levels high above their baseline.

## The 3 Types of Testosterone Injections: Which is the Most Effective .



By finding out, for example, that testosterone enanthate has a variable half-life of between 5 and 10 days making it one of the longer lasting forms of TRT treatment a patient may decide that the fewer injections it requires is a point in its favor over another form of treatment.




## Testosterone Enanthate - steroid. com



Testosterone enanthate is one of the most widely used intramuscular T esters. At a dose of 200-250 mg the optimal injection interval is 2-3-weeks but peak and trough values are clearly above and below the normal range ( Behre et al 2004 ). Testosterone propionate has a terminal half-life of only 19 hours.

## Testosterone Cycle: Test Enanthate Cycle, Stack and Results [2020]

### Bioidentical Testosterone Side Effects

More Common	Less Common
<ul style="list-style-type: none"><li>● Acne</li><li>● Hirsutism</li><li>● Changed libido</li><li>● Headaches</li></ul> 	<ul style="list-style-type: none"><li>● Changes in vision</li><li>● Fluid retention</li><li>● Blood clots</li><li>● Confusion</li></ul> 

Key takeaways: Testosterone injections are effective medications for combatting low testosterone ("T") levels. They're a common type of testosterone replacement therapy. There are three main testosterone injections available for you to choose from: testosterone enanthate, testosterone cypionate, and testosterone undecanoate.

## Testosterone Enanthate - an overview | ScienceDirect Topics



By its time frame, Testosterone Enanthate carries a half-life of approximately 8 days, which will allow for as little as one injection every 2 weeks in a therapeutic setting. However, every 7-10 days will prove far more effective in maintaining stability.

## Sustanon 250 Cycle: The Ultimate Guide - Inside Bodybuilding



Objectives: Identify the medically approved indications and contraindications for exogenous androgen replacement therapy. Summarize the adverse events and current research on contraindications with androgen replacement therapy. Review the dosing parameters for androgen replacement therapy.

**Test enanthate 250MG once a week for first cycle.**



Testosterone enanthate has an elimination half-life of 4.5 days and a mean residence time of 8.5 days when used as a depot intramuscular injection. [1] It requires frequent administration of approximately once per week, and large fluctuations in testosterone levels result with it, with levels initially being elevated and supraphysiological. [1]

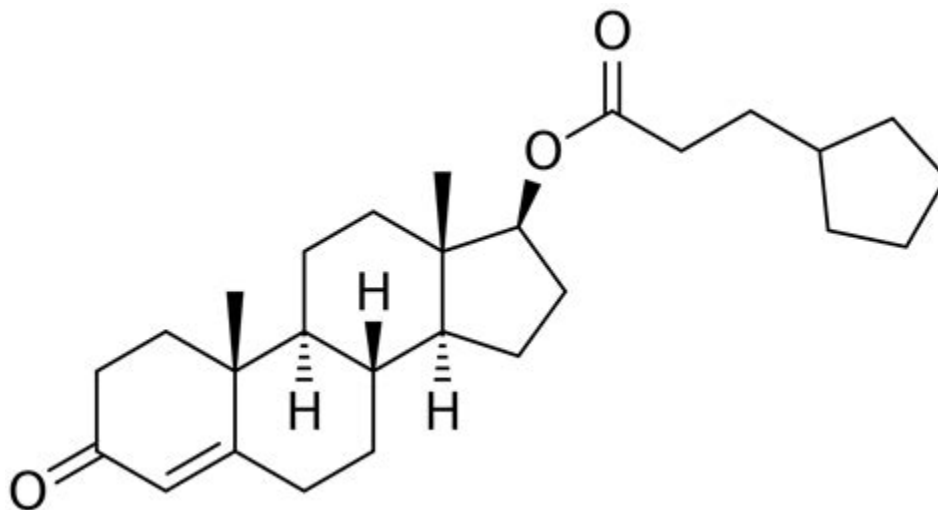
## What Is the Half-Life of Testosterone Enanthate - Nexel Medical



#1 Hey All, I'm wondering if anyone has any solid, scientific (or more accurate) information on the ACTUAL half-life of test enanthate. On most "steroid/juice/cycle" type sites you'll generally see a listing of steroid esters and half-lives. These almost always state the half-life of TE around 8-10 days,

with cypionate being a couple days longer.

### Testosterone cypionate - Wikipedia



As such, testosterone cypionate and testosterone enanthate are considered to be "functionally interchangeable" as medications. For reference, testosterone enanthate has an elimination half-life of 4.5 days and a mean residence time of 8.5 days and requires frequent administration of approximately once per week. [19]

## Testosterone enanthate - Wikipedia



2 What Results Can I Expect? 3 Sustanon 250 Cycles and Stacks 3. 1 Sustanon 250 Beginner Cycle 3. 2 Sustanon 250 Intermediate Cycle 3. 3 Sustanon 250 and Anavar Cycle (Cutting) 3. 4 Sustanon 250 and Deca Durabolin Cycle 3. 5 Sustanon 250 and Trenbolone Cycle 3. 6 Sustanon 250 / Anadrol / Trenbolone Cycle 4 Sustanon 250 Results: Before and After



# Testosterone depot injection in male hypogonadism: a critical appraisal

REVIEW

## Testosterone depot injection in male hypogonadism: a critical appraisal

Aksam A Yassin<sup>1</sup>  
Mohamed Haffjee<sup>2</sup>

<sup>1</sup>Clinic of Urology/Andrology, Segeberger Kliniken, Norderstedt-Hamburg, Germany and Department of Urology, Gulf Medical College School of Medicine, Ajman-UAE  
<sup>2</sup>Urology Division at the University of Witwatersrand & Johannesburg Hospital, Johannesburg, South Africa

**Abstract:** Testosterone compounds have been available for almost 70 years, but the pharmaceutical formulations have been less than ideal. Traditionally, injectable testosterone esters have been used for treatment, but they generate supranormal testosterone levels shortly after the 2- to 3-weekly injection interval and then testosterone levels decline very rapidly, becoming subnormal in the days before the next injection. The rapid fluctuations in plasma testosterone are subjectively experienced as disagreeable. Testosterone undecanoate is a new injectable testosterone preparation with a considerably better pharmacokinetic profile. After 2 initial injections with a 6-week interval, the following intervals between two injections are almost always 12-weeks, amounting eventually to a total of 4 injections per year. Plasma testosterone levels with this preparation are nearly always in the range of normal men, so are its metabolic products estradiol and dihydrotestosterone. The "roller coaster" effects of traditional parenteral testosterone injections are not apparent. It reverses the effects of hypogonadism on bone and muscle and metabolic parameters and on sexual functions. Its safety profile is excellent due to the continuous normalcy of plasma testosterone levels. No polycythemia has been observed, and no adverse effects on lipid profiles. Prostate safety parameters are well within reference limits. There was no impairment of uroflow. Testosterone undecanoate is a valuable contribution to the treatment options of androgen deficiency.

**Keywords:** testosterone treatment, testosterone undecanoate, pharmacokinetic profile, clinical efficacy, side effects, sexual dysfunction

### Introduction to the various testosterone preparations for treatment of hypogonadal men

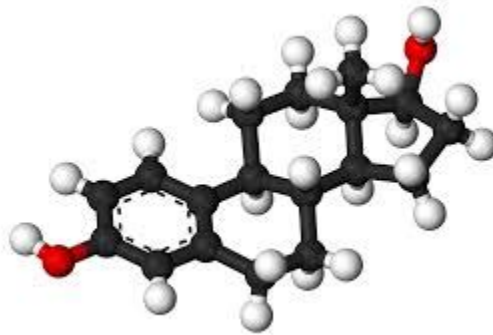
Soon after its chemical identification more than 70 years ago, the male hormone testosterone (T) became pharmaceutically available. But it took considerable time before convenient and safe preparations were developed. Three approaches have been used to make T therapeutically effective: (1) routes of administration, (2) esterification in the 17 $\beta$ -position, and (3) chemical modification of the molecule, or a combination of approaches. In clinical practice, particularly in the perception of the patient, the route of administration is most relevant, and is used to categorize the preparations described here. Recent reviews of treatment modalities may be recommended (Gooren and Bunck 2004; Nieschlag 2006).

Free unesterified T is absorbed well from the gut but is effectively metabolized and inactivated in the liver before it reaches the target organs. Pharmacological changes of the T molecule in the 17 $\alpha$ -position render the molecule orally effective. Alkylated derivatives of T including methyltestosterone and fluoxymesterone are administered orally or sublingually. They are metabolized by the liver, like natural T, but more slowly, and, like T, interact directly with androgen receptors. Clinical responses are variable and plasma levels cannot be determined accurately, because alkylated androgens are not recognized by most T assays. Prolonged use (especially the 17 $\alpha$ -alkylated androgens)

Correspondence: Aksam A Yassin  
Rathausallee 94 A, 22846 Norderstedt-  
Hamburg, Germany  
Tel +49 40 526 21 57  
Fax +49 40 526 28 20  
Email yassin@t-online.de

250mg of test enanthate can i stop now? Thread starter xxx123; Start date Aug 8, 2009; X. xxx123 New member. Aug 8, 2009 #1 quick q,

## Pharmacology of testosterone replacement therapy preparations



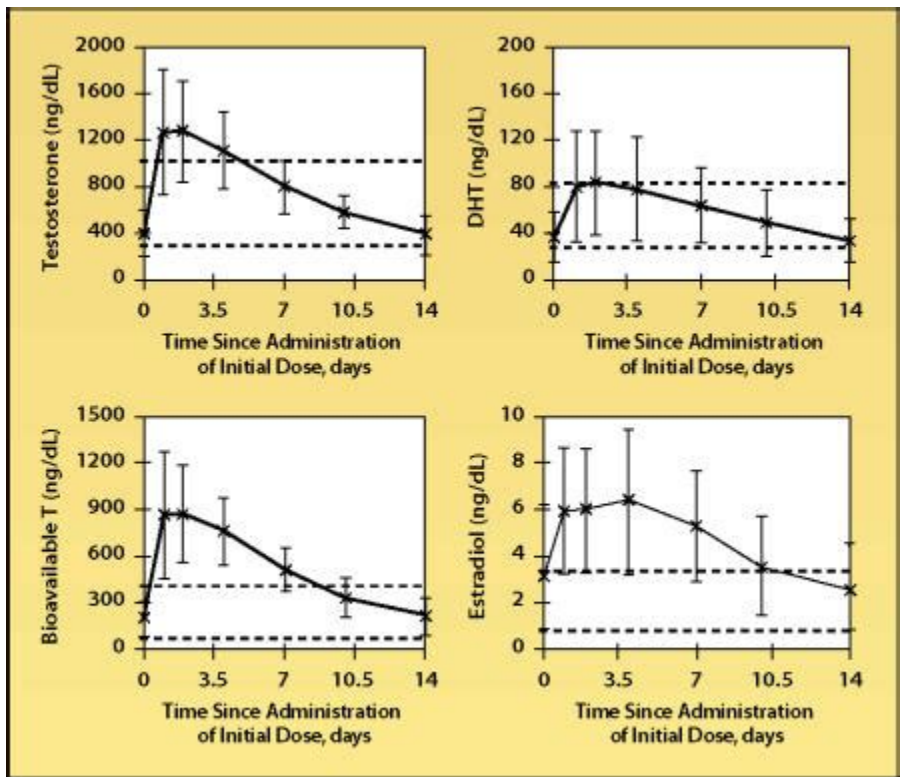
For Test Enanthate, the half-life is approximately 4.5 days. This means that after 4.5 days, the concentration of Test Enanthate in your body will be reduced by 50%. Effects of Test Enanthate Half-life. Understanding the half-life of Test Enanthate is essential for optimizing its usage and achieving desired results. Here are some key effects of .

### Testosterone Enanthate: Package Insert - Drugs. com



I used to think you needed at least 500mg/wk too, not any more. If you have low T 150mg/wk will give you good gains. I would say someone with normal T levels would need 250wk min to make it worth shutting down your natural test production. I would suggest 300-500 for a first cycle, 10wks min, 12-14wks more favorable.

### Gold Standard TRT - The Men's Health Clinic



Learning About Testosterone Enanthate Half-Life. The half-life of a steroid determines its rate at which it is consumed to half in the human body. Testosterone Enanthate has longer half-life which is 4.5 days and this is why it is taken in two divided forms weekly. A dosage of 250 mg on Monday and the other one is on Thursday.

### Androgen Replacement - StatPearls - NCBI Bookshelf



Testosterone Enanthate Injections. Testosterone enanthate (TE) is an esterified version of testosterone with a half-life of 4.5 days. In comparison, unmodified T has a half-life of 10 min (Nieschlag et al., 2012). TE has been used for T replacement for hypogonadal men for many years with a good safety profile.

## Testosterone Cypionate vs Enanthate: A Detailed TRT Comparison

**TESTOSTERONE CYPIONATE**  
VERSUS  
**TESTOSTERONE ENANTHATE**  
**2 KEY DIFFERENCES**

TESTOSTERONE CYPIONATE	TESTOSTERONE ENANTHATE
Testosterone Cypionate is a synthetic injectable version of testosterone hormone which has 8 C atoms in the ester chain.	Testosterone Enanthate is the most commonly used and oldest synthetic version of testosterone hormone which has 7 C atoms in the ester chain.
Testosterone Cypionate brand name is Depo-testosterone.	Testosterone Enanthate brand name is Delatestyl.
<a href="http://www.differencebetween.com">Visit www.differencebetween.com</a>	<a href="#">Click here to go to main differences</a>

These effects include growth and maturation of prostate, seminal vesicles, penis, and scrotum; development of male hair distribution, such as beard, pubic, chest, and axillary hair; laryngeal enlargement; vocal chord thickening; alterations in body musculature; and fat distribution.

- <https://lookerstudio.google.com/s/hPoyaPgbQyU>
- <https://peda.net/p/valentinpavlovpq/2024top/comprar-winstrol-capsulas>
- <https://groups.google.com/g/escopioli/c/v3cSGKxxVzU>