



# Test Enanthate 300 Half Life - Steroids Half-Life: Length of Stay In the Body System - Addiction Resource

Test. enanthate: Oil solution: 50, 100, 180, 200, 250 mg/mL: Delatestryl Test. cypionate: Oil solution: . A novel self-emulsifying formulation of oral testosterone undecanoate in 300-mg capsules for use once per day is under development. . The elimination half-life of testosterone in the blood or by intravenous injection is only about 10 .

\*\*\*\*\*

✓ **Our AAS Shop offers a diverse range of high-quality anabolic steroids, performance-enhancing drugs, and related products, including injectable and oral steroids, PCT, growth hormone, peptides, fat burners, and vitamins. We accept cryptocurrency for added privacy and security in transactions.**

✓ **Our genuine products are sourced from reputable manufacturers. Additionally, we provide fat burners and vitamins to support your overall health and wellness goals.**

✓ **With competitive prices and fast shipping, Anabolic Steroid Shop is your go-to source for all your fitness and performance-enhancing needs, featuring added privacy and cryptocurrency payment options.**

✓ **BUY STEROIDS ONLINE → <https://bit.ly/3G9zUVX>**

\*\*\*\*\*

## What is Testosterone Enanthate? Test E - Results - T Muscle



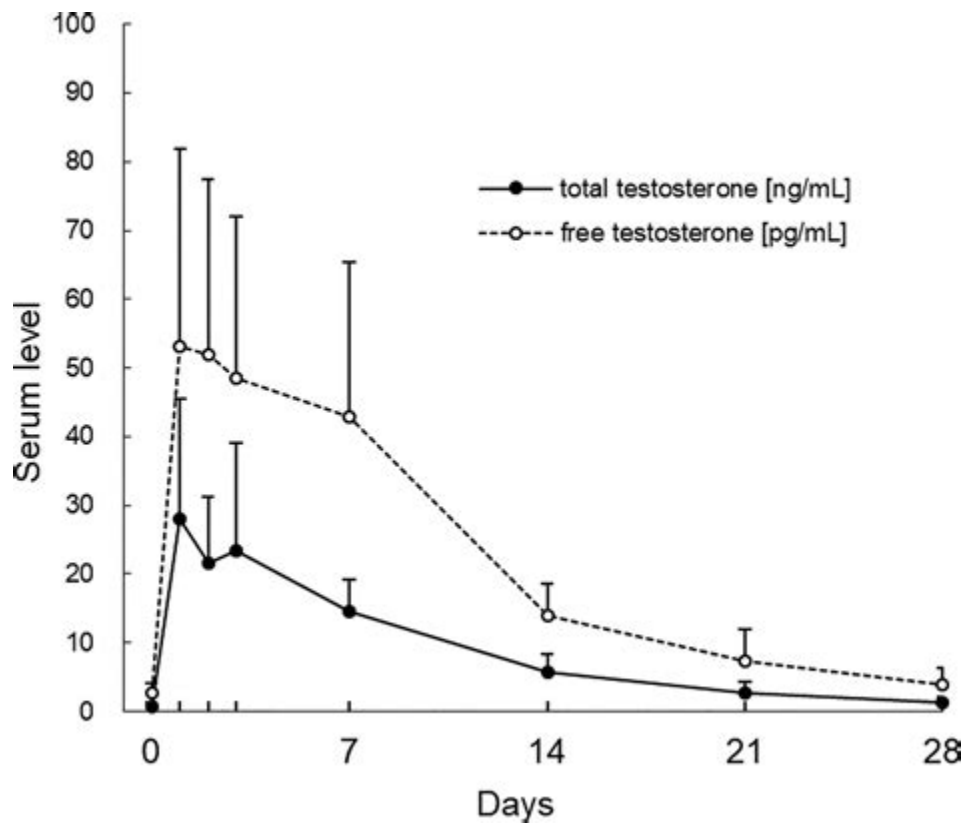
4-9 DAYS. - Equipoise (7 to 9 days) - Masteron enanthate (8 days) MORE THAN 10 DAYS. - Primobolan Depot injectable (10 to 14 days) - Deca Durabolin (14 to 16 days) Based on the information above, the oral anabolic steroid agents have lesser half-lives compared to the injectable ones.

## Testosterone Enanthate: An In-Depth Guide - Steroid Cycles



Testosterone enanthate or 'Test E' is a mid to slow-acting ester of injectable testosterone. Test E was designed to provide a steady release of testosterone into the bloodstream once injected into muscle tissue. After injection test levels rise over two weeks, the half-life of test e is stated at around 14 days.

### Pharmacokinetics of testosterone - Wikipedia



Testosterone Enanthate (Test-E) is very similar to Sustanon, except that it contains only one testosterone ester (testosterone enanthate). . It has a longer half-life than other testosterone, so needs to be injected

only once or twice per week. Testosterone enanthate (TE) is an esterified form of testosterone that is widely used in .

## Testosterone Enanthate - an overview | ScienceDirect Topics



Testosterone alone with no ester bonded to it possesses a half-life of approximately 2 - 4 hours. When the Enanthate ester is attached to it, creating Testosterone Enanthate, the half-life of Testosterone is now extended to 10 days, providing a slower release and activity of the hormone. Properties of Testosterone Enanthate

## Androgen Replacement - StatPearls - NCBI Bookshelf



You can add 300 mg of testosterone enanthate per week in the cycle for boosting the pre-existing effects. 5) . Testosterone Enanthate half-life is about 4-5 days whereas in Cypionate case, it is 7-10 days. . Test Enanthate Cycle, Stack and Results [2020] PCT Cycle: Post Cycle Therapy Supplements Review and Results [2020] .

### Testosterone Enanthate - steroid. com



By its time frame, Testosterone Enanthate carries a half-life of approximately 8 days, which will allow

for as little as one injection every 2 weeks in a therapeutic setting. However, every 7-10 days will prove far more effective in maintaining stability.

## Testosterone Enanthate - Steroids Profile - Steroidal.com



Feb 26, 2019. #1. Hey All, I'm wondering if anyone has any solid, scientific (or more accurate) information on the ACTUAL half-life of test enanthate. On most "steroid/juice/cycle" type sites you'll generally see a listing of steroid esters and half-lives. These almost always state the half-life of TE around 8-10 days, with cypionate being a .



## Testosterone depot injection in male hypogonadism: a critical appraisal

Aksam A Yassin<sup>1</sup>  
Mohamed Haffeej<sup>2</sup>

<sup>1</sup>Clinic of Urology/Andrology, Segeberger Kliniken, Norderstedt-Hamburg, Germany and Department of Urology, Gulf Medical College School of Medicine, Ajman-UAE  
<sup>2</sup>Urology Division at the University of Witwatersrand & Johannesburg Hospital, Johannesburg, South Africa

**Abstract:** Testosterone compounds have been available for almost 70 years, but the pharmaceutical formulations have been less than ideal. Traditionally, injectable testosterone esters have been used for treatment, but they generate supranormal testosterone levels shortly after the 2- to 3-weekly injection interval and then testosterone levels decline very rapidly, becoming subnormal in the days before the next injection. The rapid fluctuations in plasma testosterone are subjectively experienced as disagreeable. Testosterone undecanoate is a new injectable testosterone preparation with a considerably better pharmacokinetic profile. After 2 initial injections with a 6-week interval, the following intervals between two injections are almost always 12-weeks, amounting eventually to a total of 4 injections per year. Plasma testosterone levels with this preparation are nearly always in the range of normal men, so are its metabolic products estradiol and dihydrotestosterone. The "roller coaster" effects of traditional parenteral testosterone injections are not apparent. It reverses the effects of hypogonadism on bone and muscle and metabolic parameters and on sexual functions. Its safety profile is excellent due to the continuous normalcy of plasma testosterone levels. No polycythemia has been observed, and no adverse effects on lipid profiles. Prostate safety parameters are well within reference limits. There was no impairment of uroflow. Testosterone undecanoate is a valuable contribution to the treatment options of androgen deficiency.

**Keywords:** testosterone treatment, testosterone undecanoate, pharmacokinetic profile, clinical efficacy, side effects, sexual dysfunction

### Introduction to the various testosterone preparations for treatment of hypogonadal men

Soon after its chemical identification more than 70 years ago, the male hormone testosterone (T) became pharmaceutically available. But it took considerable time before convenient and safe preparations were developed. Three approaches have been used to make T therapeutically effective: (1) routes of administration, (2) esterification in the 17 $\beta$ -position, and (3) chemical modification of the molecule, or a combination of approaches. In clinical practice, particularly in the perception of the patient, the route of administration is most relevant, and is used to categorize the preparations described here. Recent reviews of treatment modalities may be recommended (Gooren and Bunck 2004; Nieschlag 2006).

Free unesterified T is absorbed well from the gut but is effectively metabolized and inactivated in the liver before it reaches the target organs. Pharmacological changes of the T molecule in the 17 $\alpha$ -position render the molecule orally effective. Alkylated derivatives of T including methyltestosterone and fluoxymesterone are administered orally or sublingually. They are metabolized by the liver, like natural T, but more slowly, and, like T, interact directly with androgen receptors. Clinical responses are variable and plasma levels cannot be determined accurately, because alkylated androgens are not recognized by most T assays. Prolonged use (especially the 17 $\alpha$ -alkylated androgens)

Correspondence: Aksam A Yassin  
Rathausallee 94 A, 22846 Norderstedt-  
Hamburg, Germany  
Tel +49 40 526 21 57  
Fax +49 40 526 28 20  
Email yassin@t-online.de

Based on this test enth's half life is 10. 5 days but it's terminal half life (the one we care about) is 4. 5 days. Injecting test enth every third week makes zero sense IMO, frequency should be much higher. Here's a cycle plotter that you can play around with. Put in like 15 weeks for cycle length and test enth as the compound, injected every 21 .

## Public Lab: Print



Hypogonadism is diagnosed when the morning serum testosterone level is less than 300 ng/dL. However, clinical judgment is required when diagnosing hypogonadism in a patient with testosterone levels in the normal range but persistent testosterone deficiency symptoms. [3]

## Testosterone Enanthate Cycle Guide - Steroid Cycles





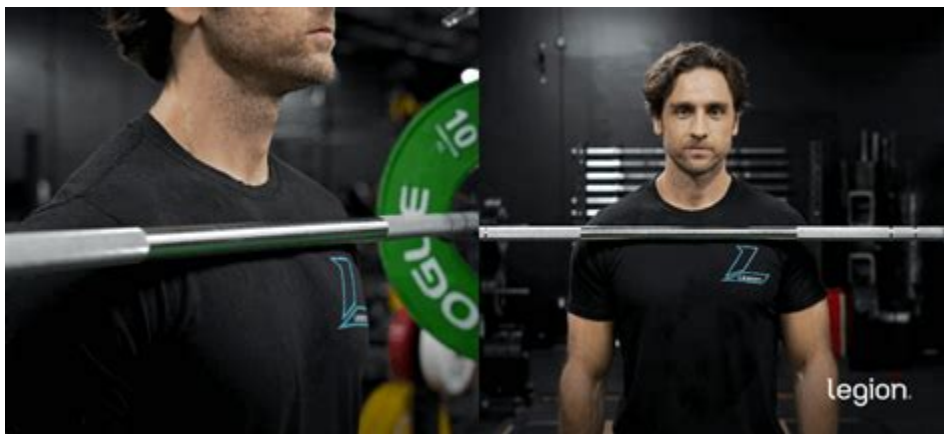
Testosterone Enanthate - Clinical Pharmacology Endogenous androgens are responsible for the normal growth and development of the male sex organs and for maintenance of secondary sex characteristics.

### Half-life of test enanthate and how often to dose it. : r . - Reddit



With Enanthate attached you get a steroid with a half life of around 8 days, making it possible to only inject once weekly if you choose; but most users will choose a bi-weekly injection schedule to maintain the optimal level of the hormone at all times.

### Test Enanthate: ACTUAL Half-Life | IronMag Bodybuilding Forums



Learn about the half-life of Test Enanthate, its effects on the body, and how to optimize its usage for better results. Find out the recommended dosage and frequency for maximum gains. . Dosage: The recommended dosage of Test Enanthate for beginners is typically between 300-500mg per week. Advanced users may increase the dosage to 500-1000mg .

## Test Enanthate Half-life - Medical Health Authority



Test-Enanthate carries a half-life of approximately 11 days while Testosterone-Cypionate has a half like of approximately 12 days. Administration of Test Enanthate As a long ester testosterone, Test-Enanthate should be injected once per week at minimum; one injection per week will keep your blood levels high

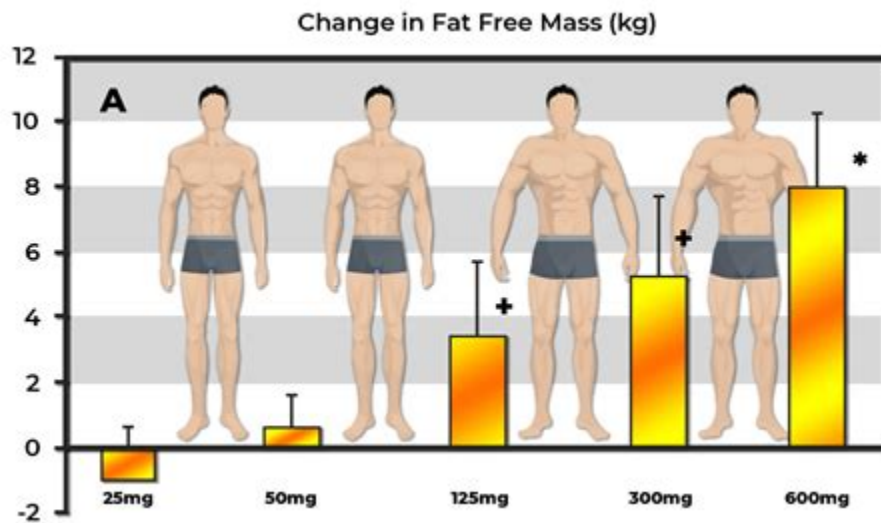
above their baseline.

## Test Enanthate - steroid. com



Testosterone Cypionate or Enanthate (intramuscular injections): Typically 50 to 200 mg every 7 to 14 days. Some men might be on a weekly injection schedule (e. g. , 100 mg/week), while others might be on a bi-weekly schedule (e. g. , 200 mg every two weeks). Testosterone Gel (topical): Dosages can vary widely based on the specific product.

## TRT and Testosterone Dosage Calculator - Muscle and Brawn



What is Test Enanthate? Test Enanthate, or "Test E," is also an injectable form of testosterone, but with a slightly shorter ester attached to its molecular structure. This means that it has a shorter half-life than Test C, typically around 10 days. Test E is often used in TRT protocols and is also popular with bodybuilders looking to bulk up.

## Sustanon vs Test E: Which is Better Overall? - Max Health Living



Some of the treated conditions are 1) primary hypogonadism, defined as testicular failure due to cryptorchidism, bilateral torsion, orchitis, vanishing testis syndrome or orchidectomy; 2) hypogonadotropic hypogonadism due to an idiopathic gonadotropin or luteinizing hormone-releasing hormone deficiency or due to a pituitary-hypothalamic injury f.

## Testosterone enanthate: Uses, Interactions, Mechanism of Action .



Key takeaways: Testosterone injections are effective medications for combatting low testosterone ("T") levels. They're a common type of testosterone replacement therapy. There are three main testosterone injections available for you to choose from: testosterone enanthate, testosterone cypionate, and testosterone undecanoate.

### Testosterone enanthate - Wikipedia

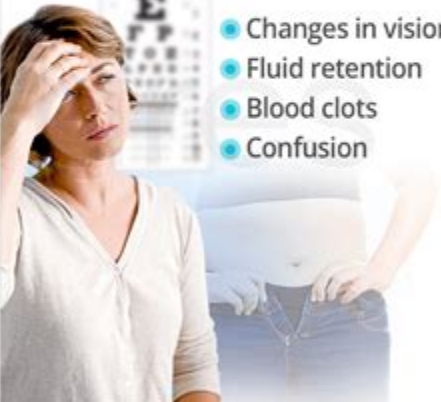




Testosterone enanthate (TE) is an esterified version of testosterone with a half-life of 4.5 days. In comparison, unmodified T has a half-life of 10 min ( Nieschlag et al. , 2012 ). TE has been used for T replacement for hypogonadal men for many years with a good safety profile.

### Testosterone Cycle: Test Enanthate Cycle, Stack and Results [2020]

**Bioidentical Testosterone Side Effects**

More Common	Less Common
<ul style="list-style-type: none"><li>● Acne</li><li>● Hirsutism</li><li>● Changed libido</li><li>● Headaches</li></ul> 	<ul style="list-style-type: none"><li>● Changes in vision</li><li>● Fluid retention</li><li>● Blood clots</li><li>● Confusion</li></ul> 

Testosterone enanthate is one of the most widely used intramuscular T esters. At a dose of 200-250 mg the optimal injection interval is 2-3-weeks but peak and trough values are clearly above and below the normal range ( Behre et al 2004 ). Testosterone propionate has a terminal half-life of only 19 hours.

# Testosterone Enanthate: Package Insert - Drugs. com



It has a half life of about 8 to 10 days and is a slow release testosterone steroid used in injectable form either for performance enhancement or as a TRT. Testosterone Enanthate Cycle Guide

## Testosterone Enanthate 250mg as TRT : r/Testosterone - Reddit



Testosterone enanthate has an elimination half-life of 4.5 days and a mean residence time of 8.5 days when used as a depot intramuscular injection. [1] It requires frequent administration of approximately once per week, and large fluctuations in testosterone levels result with it, with levels initially being elevated and supraphysiological. [1]

## The 3 Types of Testosterone Injections: Which is the Most Effective .



Half-life of test enanthate and how often to dose it. I've been following MPMD for quite a number of years at this point and I've finally decided to jump on the juice. My plan is to do a 8 or 12 week cycle of Test E but I thought I'd clarify certain things before jumping on the juice.

- [https://colab.research.google.com/drive/1GYm7l\\_f5gLXS7XuTvYgVOQ8HljpcN3r-](https://colab.research.google.com/drive/1GYm7l_f5gLXS7XuTvYgVOQ8HljpcN3r-)
- <https://www.podcasts.com/anabolizante-1/episode/where-to-buy-pregnyl-hcg>
- <https://groups.google.com/g/aasseller/c/UshpKssYYbM>