



Igf 1 Lr3 Test Cycle - IGF 1 LR3 Peptide Review: Benefits, Dosage, Results, & More

IGF 1 LR3 Cycle Instructions These injections usually occur for a cycle that spans between 4-6 It's very important not to over exceed the cycle to avoid unwanted, permanent For example, "bubble gut" is an uncommon side effect yet generally occurs as a result of taking for longer than 1-2

**100% SECURE ONLINE
ANABOLIC STEROIDS
SHOP**

ORAL | INJECTABLE | HGH | WEIGHT LOSS
PEPTIDES | PCT

WE SHIP
WORLDWIDE

100% SECURE TRANSACTION
SSL
TRANSACTION

? VISIT OUR ONLINE STORE: <https://t.co/38y7dUcOsp>

IGF-1 LR3 induces a high rate of cell proliferation (hyperplasia) and division due to remaining in the bloodstream for much longer than regular IGF-1, with the effect of increasing muscle Researchers have noted that one dose of insulin-like growth factor LR3 provides almost ten times as much cell activation

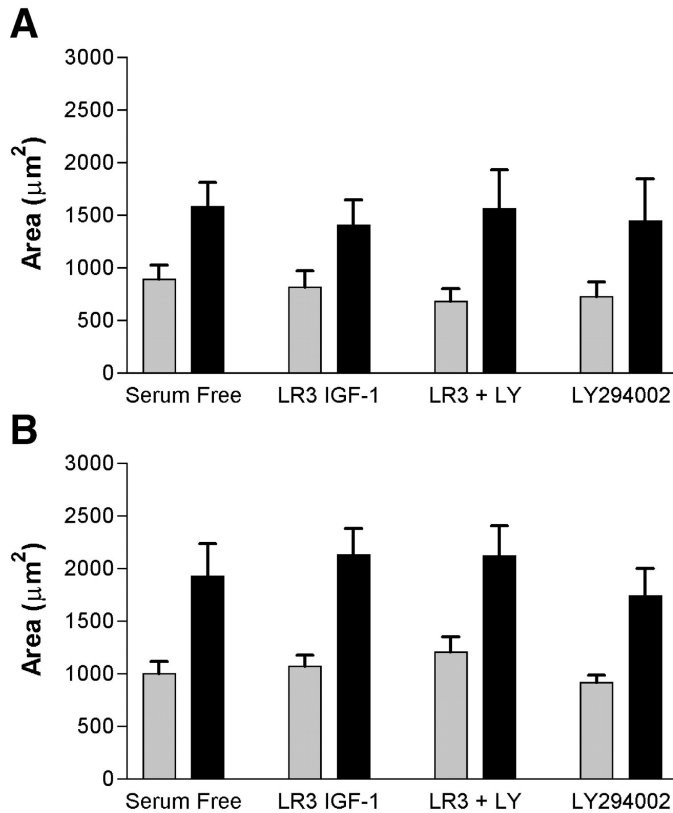
as a similar dose of IGF-1 [3]

IGF-1 LR3 Peptide Explained - LEAVINGWEAKNESS



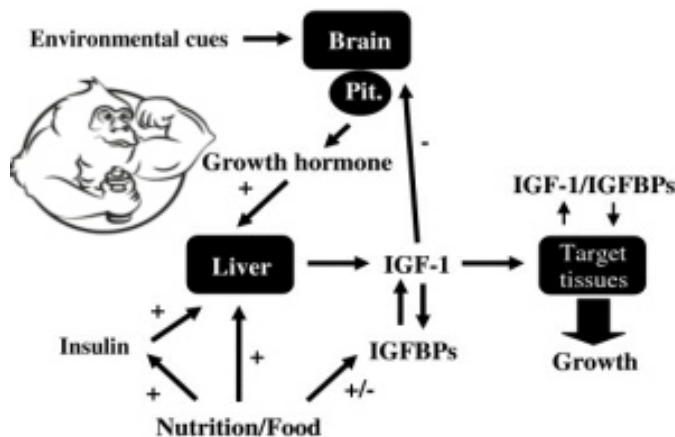
Based on my experience, there comes a point of diminishing returns with IGF-1 LR3 where the preceptors actually downgrade and it doesn't work as well after 1 This means cycles of IGF-1 LR3 need to be isolated to 4 week intervals or the body will gain a tolerance to This peptide really lives up to its reputation if taken

IGF1 LR3 Peptide Review: Benefits, Before & After, Dose, & More - Design



The IGF1 LR3 is a synthetic peptide that is a lengthened version of the IGF1 peptide. IGF1 has a smaller chain with 70 amino acids, and the IGF1 LR3 has 83 amino acids. The IGF1 LR3 is the agonist of IGF1 and has improved metabolic effects. This, in turn, results in higher

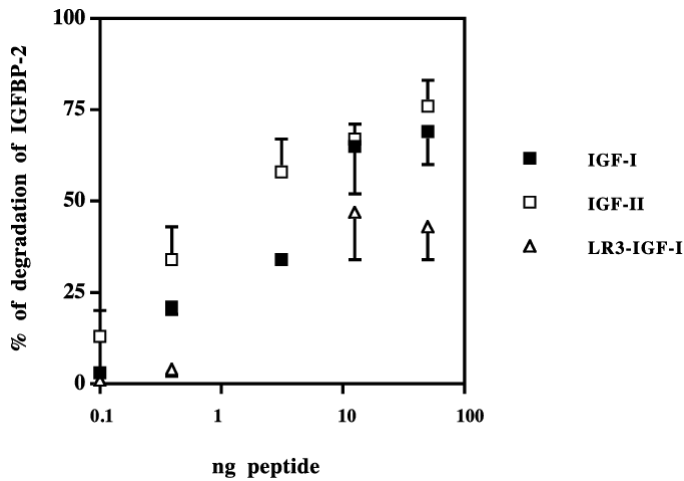
Is IGF-1 LR3 better than HGH? [Solved] (2022)



Does IGF-1 LR3 build muscle? Does IGF-1 make you bigger? What does IGF-1 LR3 do? How quickly does IGF work? Does HGH build muscle fast? How long can I take IGF-1 LR3? Does IGF-1 LR3 cause

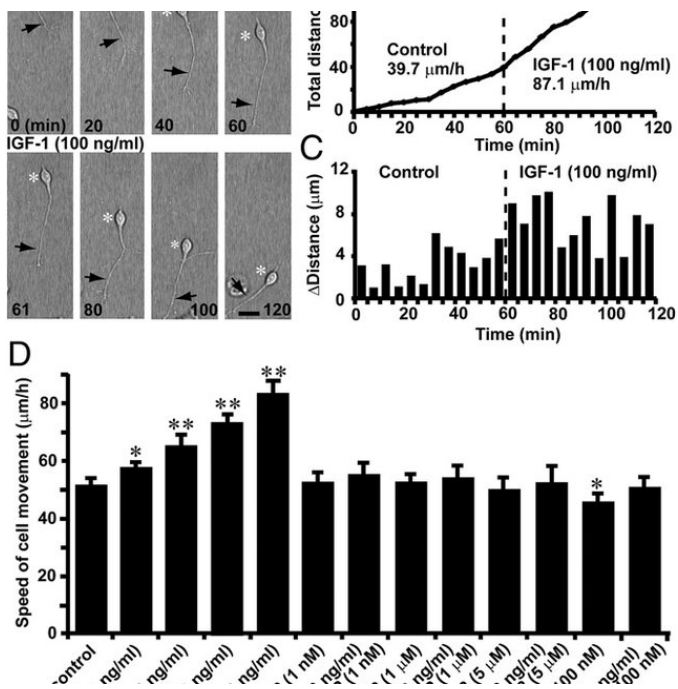
water retention? Does IGF-1 LR3 need to be refrigerated? Does IGF-1 Really Work? Is IGF-1 good for building muscle?

IGF-1 Review - Muscle and Brawn



A daily dosage of 20-50 mcg of IGF-1 LR3 is suggested by the physicians for a cycle of 6 to 7 weeks as desensitization may follow after IGF-1 vs IGF-1 DES IGF-1 DES is rather a shorter derivative of IGF-1 but approximately 5 times more potent than the parent

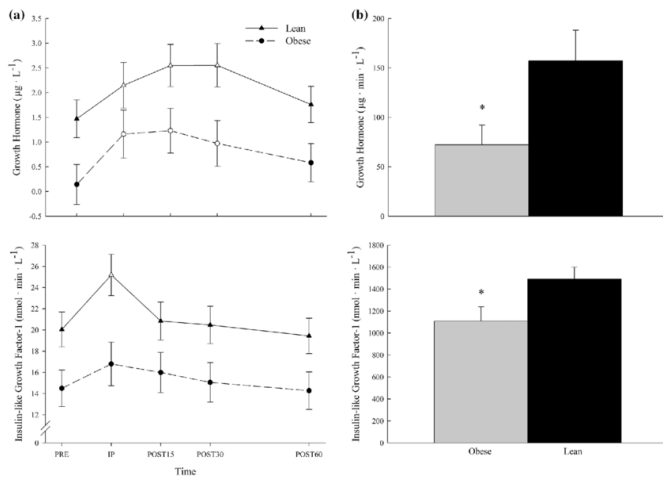
How can i cycle IGF1 LR3 this stuff is insane : r/Peptides - reddit



That is why it is important to do a 1 week split(1 muscle group per week) while on IGF1 in order to not interrupt the IGF1 growth Working out a muscle inherently releases MGF, so working out the same muscle twice in a week can have the MGF accumulation short cycling the IGF1 Reply hrblair24 •

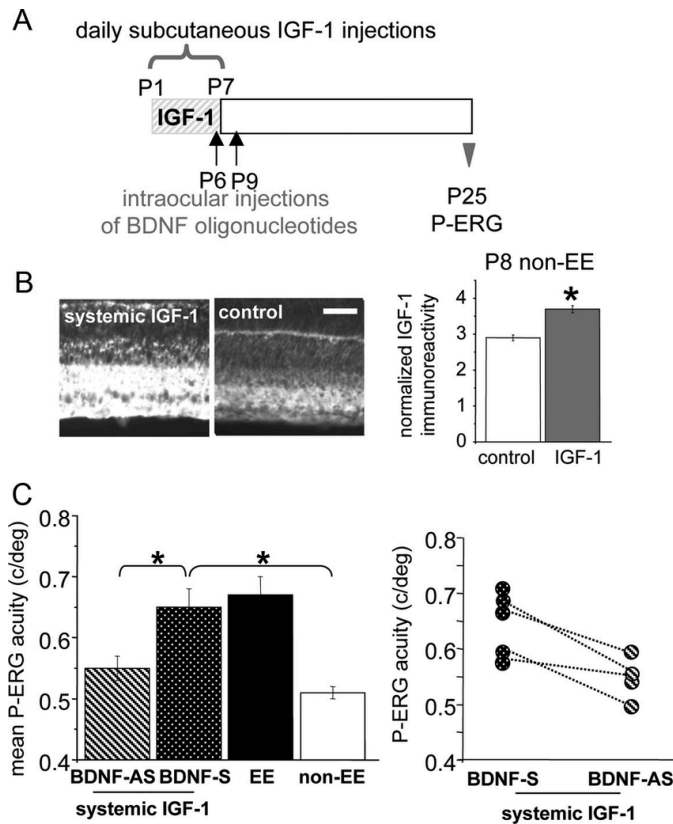
Additional comment actions

How To Use Igf 1 Lr3 For Bodybuilding? (Correct answer)



IGF-1 LR3 should be administered once daily for six weeks, according to the You should take roughly 20-40 days off after six weeks before beginning a fresh course of IGF-1 If you want the greatest outcomes, consume protein together with a mixture of carbs 15-20 minutes before injecting IGF-1/

IGF-1 LR3 with MOD GRF and Ipamorelin cycle advice



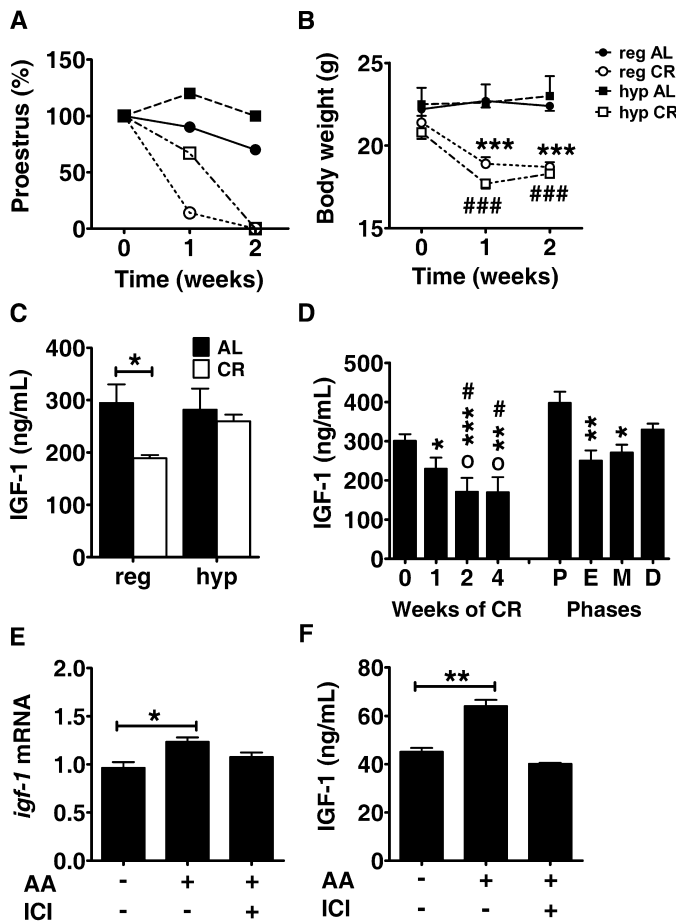
Currently dosing the mod-grf and ipam at 150mcg/150mcg AM and PM in a fasted Was just seeking

some advice on what the best time to take the IGF-1 LR3 would be and at what dosage for someone my size to go along with those My stats: 31 years old, 6'3 and 135kg, approx 14% 12 years training Thanks in advance! S

IGF-1 LR3

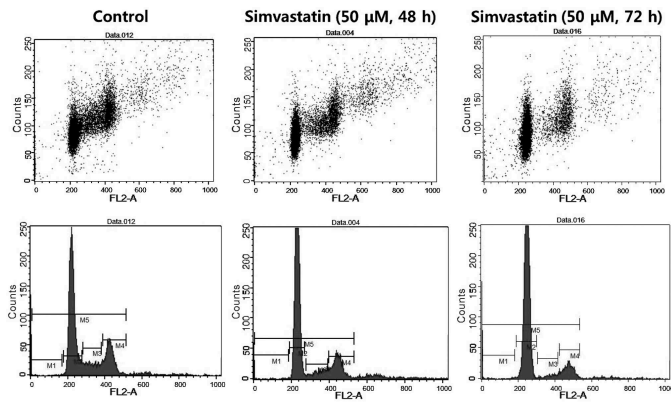
The way mentioned above Taking lr3 daily in the morning sub q and then use Des post workout in the muscles trained right before the post workout meal saderboy80 Active member Awards 2 Aug 6, 2022 #7 Smont said: Tough call, some ppl respond good to it and some ppl notice

IGF Signaling in Intervertebral Disc Health and Disease - PMC



IGF The IGF axis is composed of ligands such as insulin, insulin-like growth factors 1 and 2 (IGF1, IGF2), receptors (IGF-1R, IGF-2R), IGF binding proteins (IGFBPs) one to seven, and IGFBP protease (Martel-Pelletier et, 1998; Wang et, 2014; Hua et, 2020; Ianza et, 2021)IGF ligands bind its receptors and binding proteins with high affinity (Huang et,

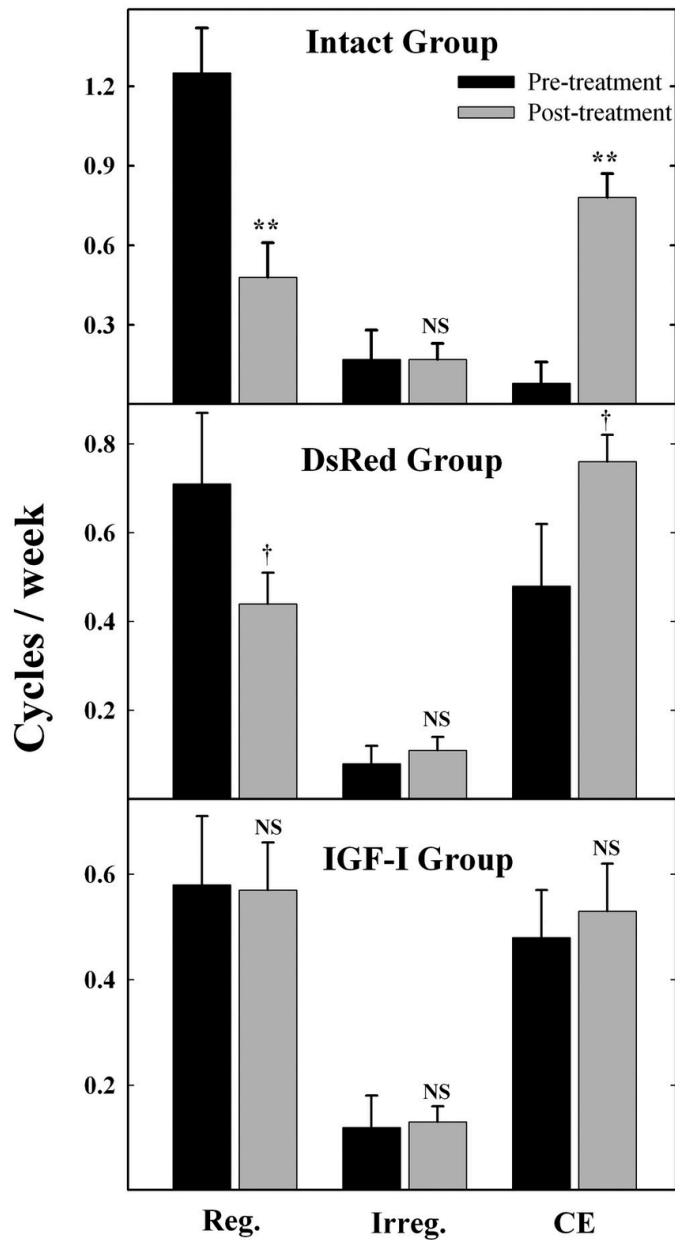
IGF-1 DES or IGF -LR3 question - The Iron Den



Cell cycle phase	Control	Simvastatin (50 μM, 48 h)	Simvastatin (50 μM, 72 h)
G0 (%)	0.73	1.34	2.65
G1 (%)	61.65	71.10*	82.04*
S (%)	14.50	9.11	3.48
G2/M (%)	23.12	18.45	11.63

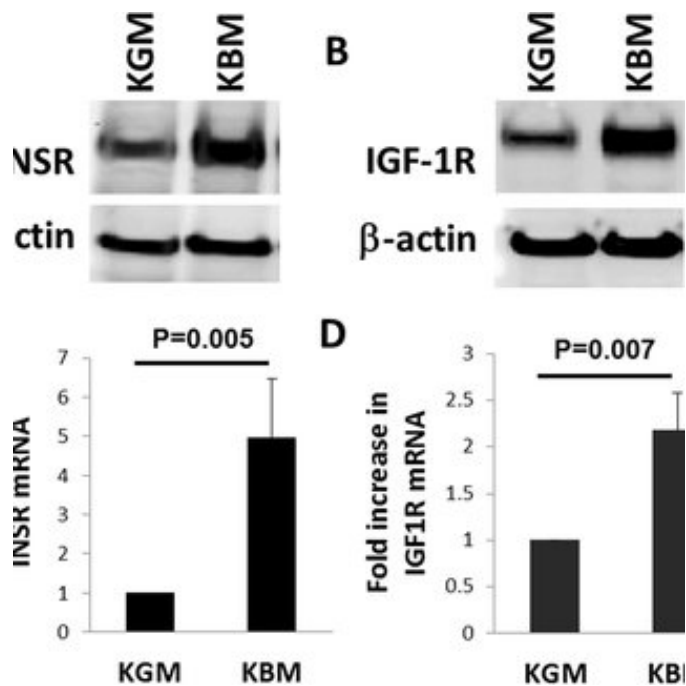
Got a credit with a Research Never really got in those types of But I'm recovering from surgery for a torn bicep and torn rotator Thinking adding IGF would help speed the Reading mix information on these 2 types of IGF Which type of IGF

IGF-1 DES Dosage Calculator and Guide - Peptides



No adverse effects have been found in test subjects being administered native IGF-1 for periods between two to twelve weeks [18, 19] As such, IGF-1 DES research study durations tend to last between four to six weeks, followed by an equivalent duration of Sample IGF-1 DES Dosage Protocol

IGF-1: Definition, Mechanism, Tremendous Functions In Various



IGF-1 LR3 (long arginine 3-IGF-1) is a synthetic variant of IGF-1 that researchers produced to examine the hormone's activities over extended periods of Natural IGF-1 has a short half-life and enjoys interacting with various proteins, which might cause lab-based test findings to

MGF, IGF-LR3, HGH, Insulin & AAS

CERTIFICATE OF ANALYSIS

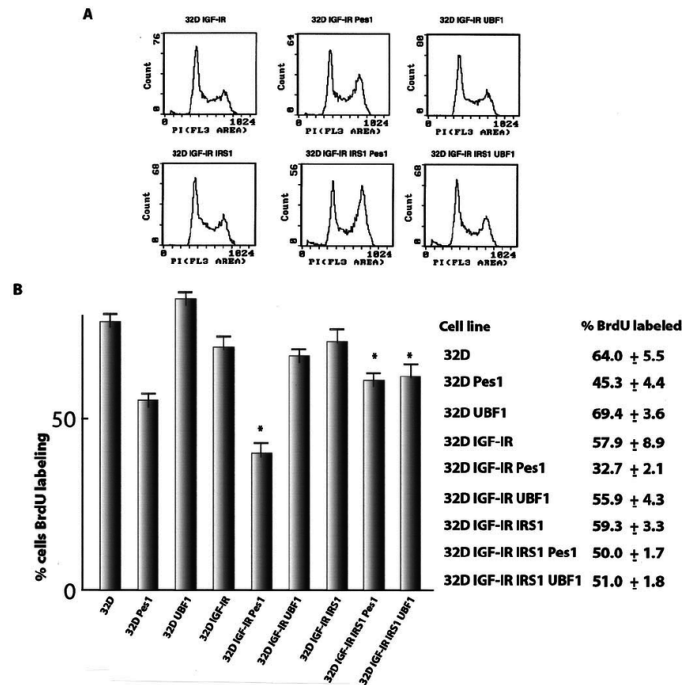
Product Name: Fmoc-Lys(Boc)-OH Lot No.: GLS170617-36802
 CAS No.: 71989-26-9 Store at: Cool dry place(<25°C)
 Molecular Formula: C₂₀H₃₂N₂O₆ Molecular Weight: 468.55
 Manufacturing Date: 2017-6-17 Retest Date: 2019-6-17

Tests	Specifications	Results
Appearance	White powder	Complies
Purity(HPLC)	≥99%	99.73%
Optical Purity	≤0.3% D-enantiomer	Not detectable
Melting Point	125-140°C	128.9-135.1°C
Specific Rotation $[\alpha]_D^{20}$	-12±2.5°(C=1 in DMF)	-11.6°(C=1 in DMF)
Clarity of solution	0.3 gram in 2ml DMF clear solution	Complies
Kaiser Test	<0.05%	<0.05%
TLC	≥98%	>98%
Element analysis(C, H, N)	≤5.0%	<5.0%
Water Content(K.F.)	≤1.0%	0.18%
Loss on drying	≤1.0%(50°C,2h)	0.36%
IR Spectrum	In accordance with the structure	Complies
Mass Spectrum	In accordance with the structure	Complies
NMR Spectrum	In accordance with the structure	Complies

I am currently take IGF-1 LR3 along with But no insulin, no gh, and no other Jstrong20 Well-known

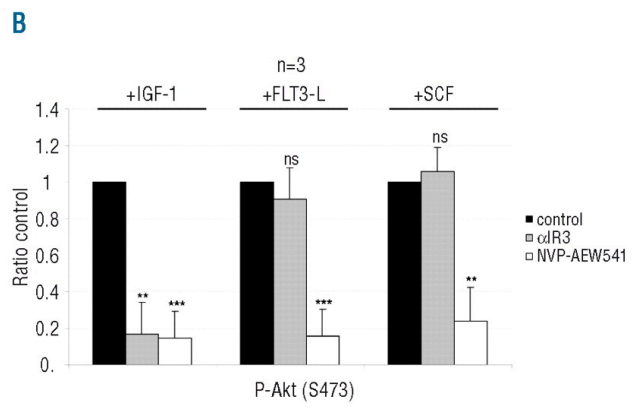
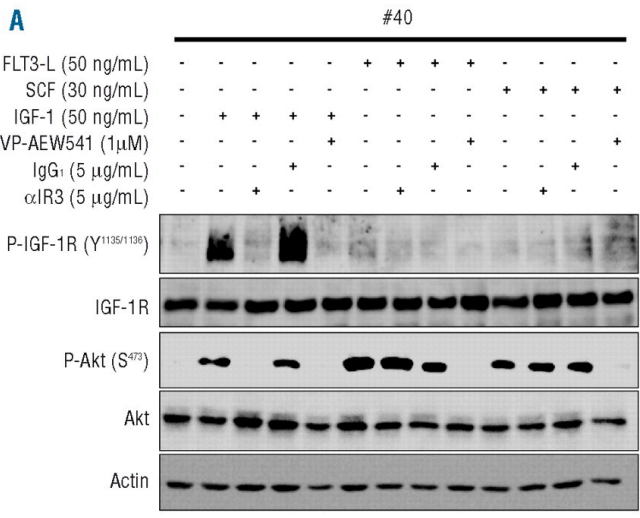
Awards Unanswered PEG-MGF on cycle and IGF-1 LR3 on PCT? Started by UNX; Oct 3, 2019;
 Replies: 0; IGF-1/ My first peptide IGF-DES + IGF LR3 and MGF(non peg) Started by BigAJ4; May
 23, 2015; Replies: 2;

IGF-1 - Pathology Tests Explained



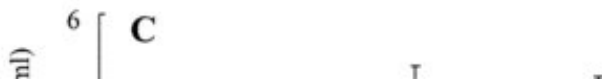
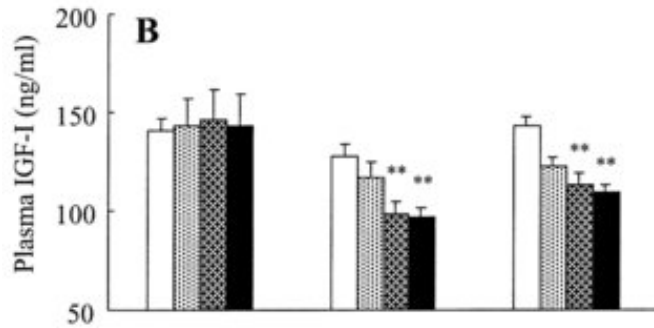
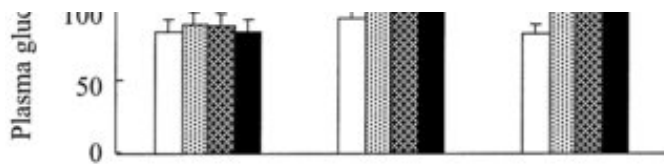
IGF-1 is produced by the liver and to a lesser degree by skeletal muscles, primarily in response to GH. It mediates many of the actions of GH, stimulating the growth of bones and other tissues and promoting the production of lean muscle. The blood level of IGF-1 mirrors GH.

IGF-1 LR3 | Peptide Therapy - Physio Logic NYC



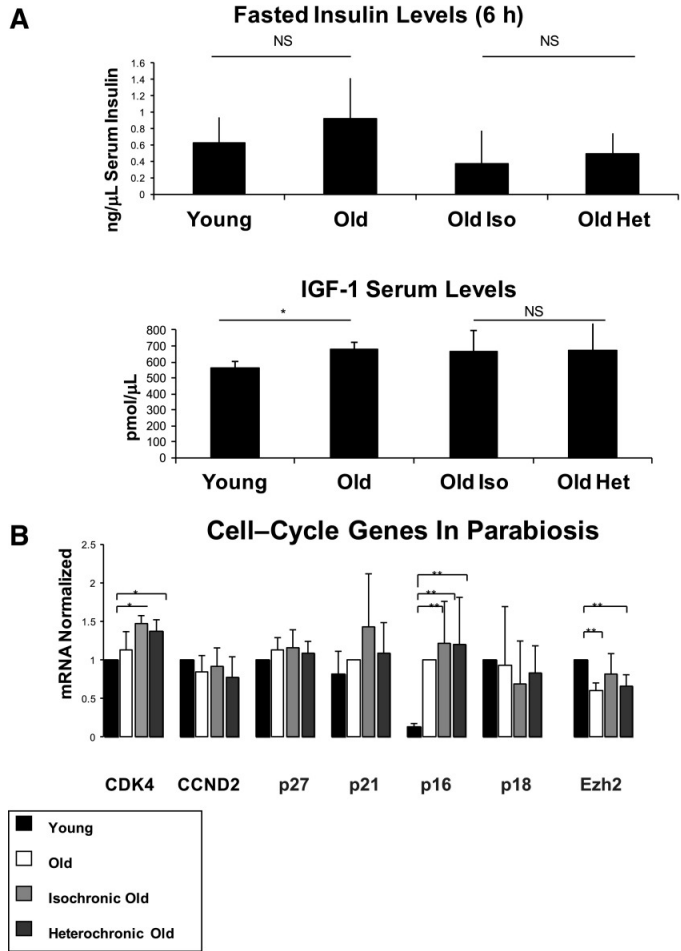
IGF-1 LR3 has a modified amino acid sequence compared to biological. It has an additional arginine at amino acid position. By making this change, it gives the molecule higher potency and a much longer half-life. For this reason, it is commonly used as a long-acting version for the same therapeutic reasons as the biological IGF-1.

IGF-1: Cancer, Anti-Aging, and Metabolism Remedy



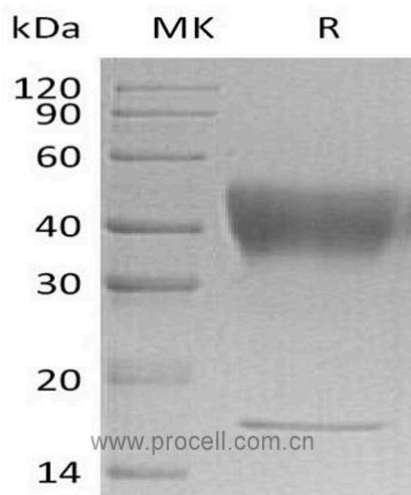
Insulin-like growth factor 1 (IGF-1) is an example of a liver-produced nutrient that plays a crucial role in the body regarding areas such as Cancer, Anti-Aging, and For now, it is enough to say that IGF-1 LR3 cooperates with growth hormone (GH) The significance of growth hormone (GH) in the human body is probably sound

Buy Receptor Grade IGF-1 LR3 (100mcg) - Biotech Peptides



Receptor Grade IGF-1 LR3 peptide is a prime research reagent used in studies for cellular growth, IGF receptors, and IGF binding. It is more powerful than rH IGF-1 and Media Grade IGF-1 LR3 in-vitro because of the significant improvement in its biological activity (since it exhibits a stronger affinity for the IGF receptor).

IGF1-LR3 uses and benefits



IGF1-LR3 The recommended dosage for IGF-1 LR3 is 40-50 mcg daily, intramuscularly per injection at animal Injection should be given on an empty stomach, thirty to sixty minutes before Dosage should be continued for a six-to-seven-week cycle, depending on required

[Previous Page](#) - [Next Page](#)