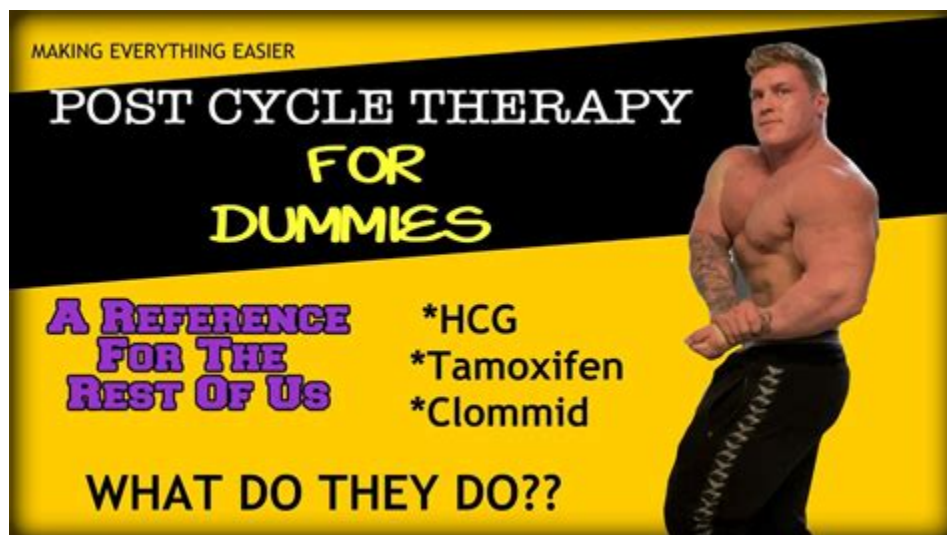


As an anti-estrogen for on cycle steroid use, Clomid is fairly effective at staving off gynecomastia. It will not reduce estrogen levels or inhibit the aromatization process, but in many cases, binding to the receptors is enough protection for many men.



[👉👉👉 CHECK OUT OUR STORE 👉👉👉](#)

Clomid during cycle : r/PEDs - Reddit



If taken for Post Cycle Therapy, then a protocol of clomid and HCG is highly suggested. 4b) If your

using HCG throughout your steroid or hormone cycle, you can run it alongside your aromatase inhibitors, (arimidex, aromasin, letrozole, cabergoline etc. .) . When to start HCG during steroid cycle. Start HCG at week 4 of cycle with dosage of 1 .

Clomid Bodybuilding | Dosage & Benefits | Nanotech Project



Clomid during cycle . Can I take a small dose of Clomid (like 12,5 mg EOD or less) during a SARM cycle to prevent suppression? I used Clomid in low doses before with no side effects. Archived post. New comments cannot be posted and votes cannot be cast. . Sunlingual steroids upvotes .

Post Cycle Therapy (PCT) Chart. When to start HCG , Clomid and Anti .

Propionate:		weeks
Testosterone	4 - 8 hours	2-3
Suspension:		weeks
Winstrol	8 - 12 hours	2-3
		weeks

While a 150mg per day Clomid dosage can be very effective there are those who are going to need a little more but we can safely say a dosing plan that begins lower than this after any serious anabolic steroid cycle really isn't going to do much and will be worth very little. Proper Clomid Dosage - On Cycle:

Clomid - steroid

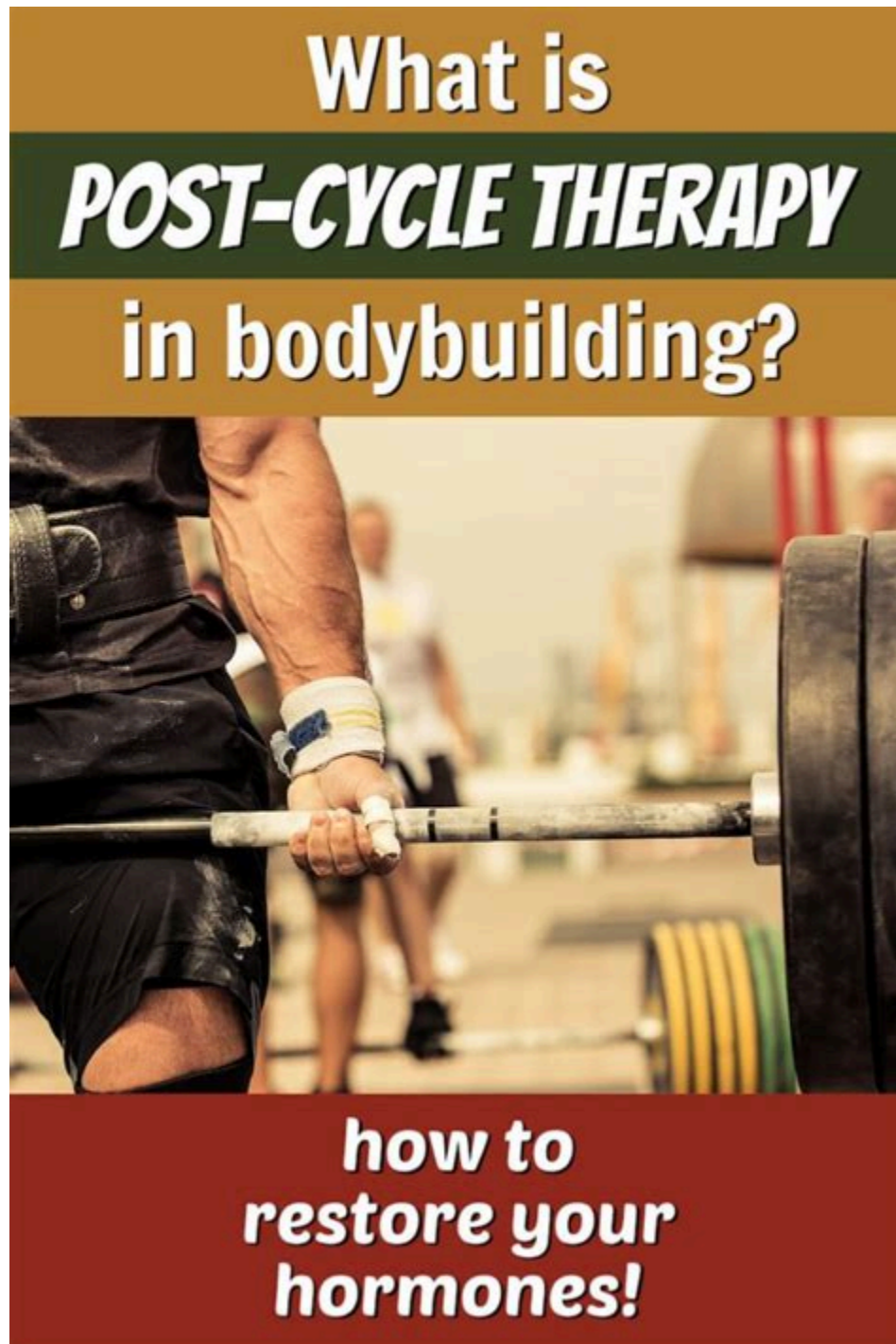


Clomid and Nolvadex are both valuable tools for bodybuilders who want to prevent estrogen-related side effects during steroid cycles. Nolvadex may cause some side effects such as hot flashes, nausea, and leg cramps. The two most popular anti-estrogens among bodybuilders are Clomid and Nolvadex. Side Effects of Clomid and Nolvadex during cycle .

How to Run HCG during a steroid cycle and post cycle dosages

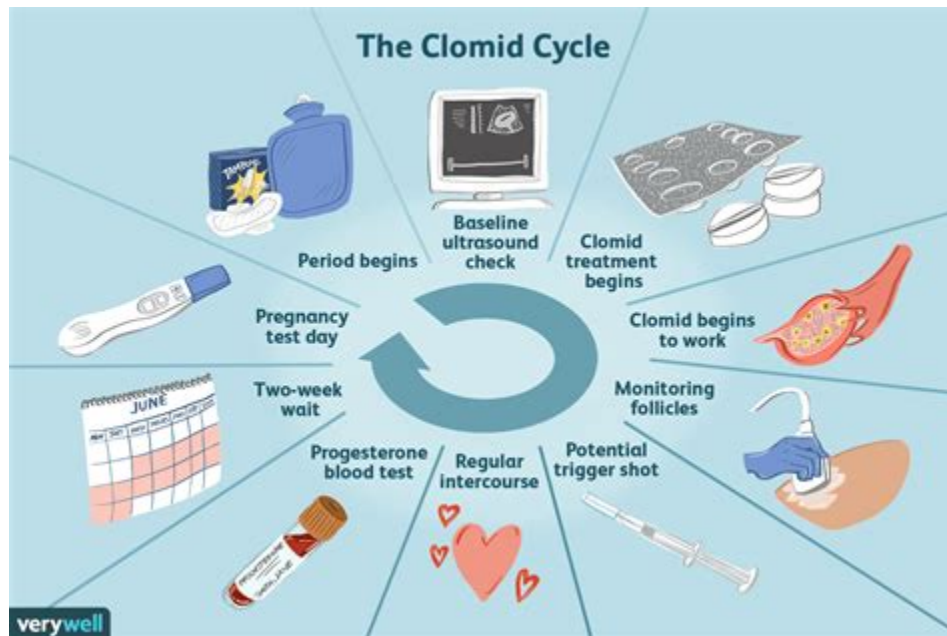
Week	Test E	Dbol	Hcg	Arimidex	Nolvadex	Clomid
1	800mg	40mg	500iu	0.25mg		
2	500mg	40mg	500iu	0.5mg		
3	500mg	40mg	500iu	0.5mg		
4	500mg	40mg	500iu	0.5mg		
5	500mg		500iu	0.25mg		
6	500mg		500iu	0.25mg		
7	500mg		500iu	0.25mg		
8	500mg		500iu	0.25mg		
9	500mg	40mg	500iu	0.5mg		
10	500mg	40mg	500iu	0.5mg		
11		40mg	500iu	0.5mg		
12		40mg	500iu	0.5mg		
13			500iu			
14					40mg	
15					40mg	50mg
16					20mg	50mg
17					20mg	50mg
18						50mg
19						

Post cycle therapy (PCT) When to start HCG , Clomid and Anti-Estrogens - Clomid PCT Post cycle therapy is a method of employing drugs which work via various mechanisms to go about trying to aid stabilising and restoring a users hormones back to normal once a suppressive anabolic androgenic steroid cycle has been ceased. Once a user has ceased use of anabolic androgenic steroids they are left .



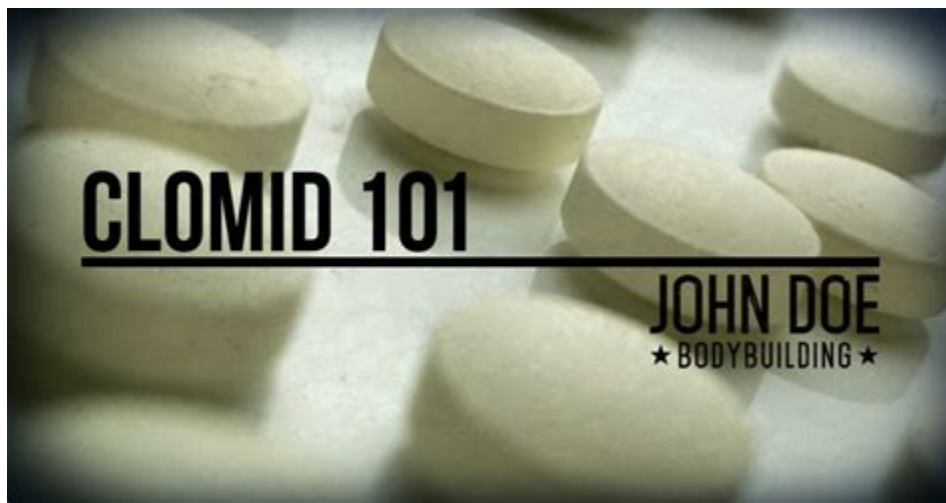
Some men take Clomid during cycle as a SERM (selective estrogen receptor module) to prevent estrogen from binding to receptors. This isn't as common as taking a SERM such as Nolvadex, and honestly neither of the two are really the best method anymore since the introduction of aromatase inhibitors.

Clomid PCT (Post Cycle Therapy) Protocol: What to Know | Ro



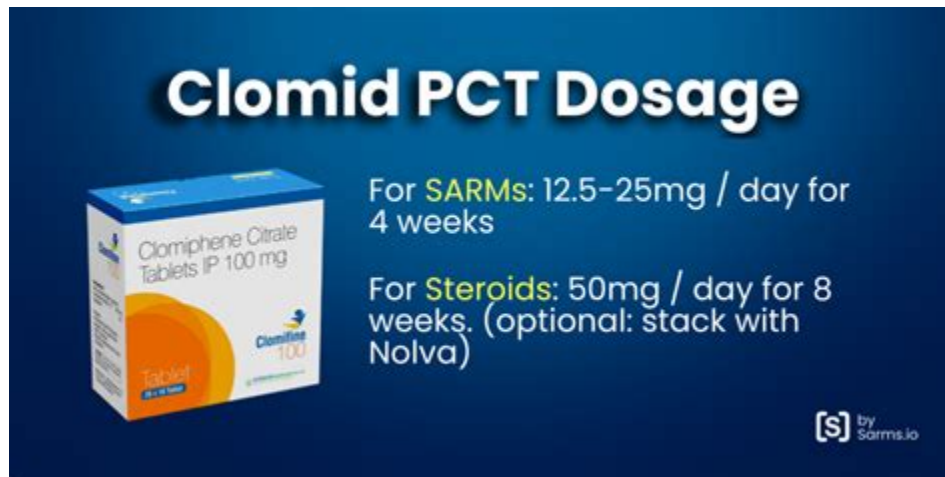
Post Cycle Therapy (PCT) is a procedure used to increase the body's natural testosterone production after anabolic steroid use has finished. Clomiphene citrate, a prescription meant to enhance testosterone production in men, is one of the most often used PCT medications.

Clomid 101 - John Doe Bodybuilding



For when you're coming off a light steroid or testosterone cycle For when you're coming off a harsh steroid or testosterone cycle Side Effects of Using Clomid 1) May Reduce Bone Density 2) Causes Weight Gain 3) Might Cause Abdominal Pain 4) May Disturb Vision 5) Causes Acne Where To Buy Clomid? Frequently Asked Questions Summary

Clomid PCT: Best Post Cycle Therapy After SARMs / AAS



Dosage: At the low recommended dosage that will be effective to stop your prolactin-related side effects, Cabergoline is very unlikely to cause serious side effects. Consider a dosage of between 0.25 and 0.5mg twice weekly during your cycle. Cabergoline (Dostinex) PCT 101: The Bodybuilder's Guide.

Clomid or nolvadex during cycle. Exploring the potential long-term .



Clomid, or Clomiphene Citrate, is a SERM (selective estrogen receptor modulator), so it's in the same grouping as tamoxifen (nolvadex). It is the most widely prescribed drug for ovulation induction, which is useful for those who are infertile. Studies have shown a pregnancy rate of 5.6% per cycle with clomid treatment vs 1.3% without.

Clomid PCT (Clomiphene Citrate PCT Guide) - Steroid Cycles

Weeks	Stanozolol	Nan D	Clomid
1	20mg/day	200mg/week	
2	30mg/day	200mg/week	
3	40mg/day	200mg/week	
4	50mg/day	400mg/week	
5	50mg/day	400mg/week	
6	40mg/day	200mg/week	
7	30mg/day		
8	20mg/day		
9			100mg/day
10			50mg/day
11			50mg/day
12			50mg/day
Total	200tabs	8ml	40tabs

The other advantage to using Clomid is that after a steroid cycle, it can help to inhibit catabolism. By doing so, users could hang on to more of the gains they achieved and lose far less muscle mass. . When used during a cycle a much smaller dose of Clomid is required, typically around 50mg. It's worth noting that Clomid is a less powerful .

Clomid - Evolutionary



It merely aids in restoring natural testosterone levels after a steroid cycle. Furthermore, Clomid is not without risks. Side effects can range from minor inconveniences like mood swings and visual disturbances to more serious health complications, although these are rare.

Post Cycle Therapy (PCT): The Ultimate Guide - Steroid Cycles



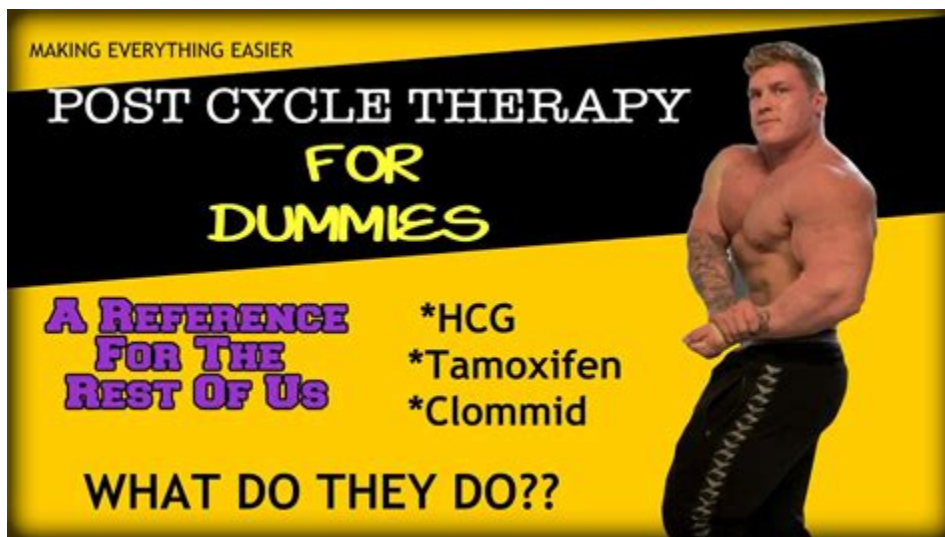
Yes, it's relatively safe to use Clomid after a steroid cycle. Even though it's safe for the most part, its use and misuse can have some side effects. During a steroid cycle, your body naturally dials down its natural testosterone-producing functions because it receives testosterone from an external source.

Clomid: Optimize Bodybuilding Gains during a Cycle



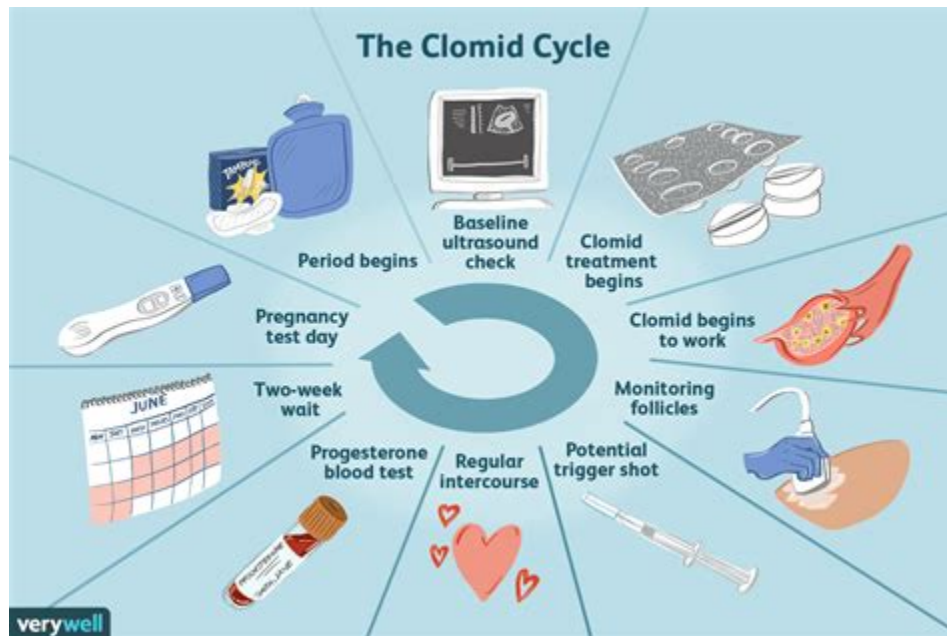
A Solid Clomid cycle would include 2 weeks of use at 150mg per day, 1-2 weeks at 100mg per day and 1 week at 50mg per day; perhaps an added week if necessary again at 50mg per day. To make it easier to read: Week 1: Clomid 150mg per day Week 2: Clomid 150mg per day Week 3: Clomid 100mg per day Week 4: Clomid 100mg per day

Post Steroid Cycle Clomid, Nolvadex, Arimidex, Femera , HCG



Clomid is usually used once you finish a cycle of steroids, and it is employed for the 2-3 weeks following it. The recommended dose of Clomid is 50mg to 100mg ED, although some will opt to do a high front load (200mg+) on the first day and continue to taper down as the days go on. HCG. HCG PCT (Pre - Present - Post Steroid Cycle Therapy)

Clomid during cycle - AnabolicMinds



In the world of bodybuilding, Clomid is highly prized for its ability to mitigate estrogenic side effects caused by many steroids during a cycle, as well as for combating the suppression of natural testosterone as a result of using steroids, which is the main goal of its use in post cycle therapy.

Post Cycle Therapy: Taking Clomid During Steroid Cycle



Post cycle therapy, or PCT, is a protocol you follow after (or "post") completing a cycle of anabolic steroids, a type of performance-enhancing drug (PED). While some PEDs can offer benefits such as muscle growth, they may also wreak havoc on other aspects of your physical health — especially your testosterone levels.

Clomid For Bodybuilding: PCT, Cycling, Muscle Gain - Muscle and Brawn



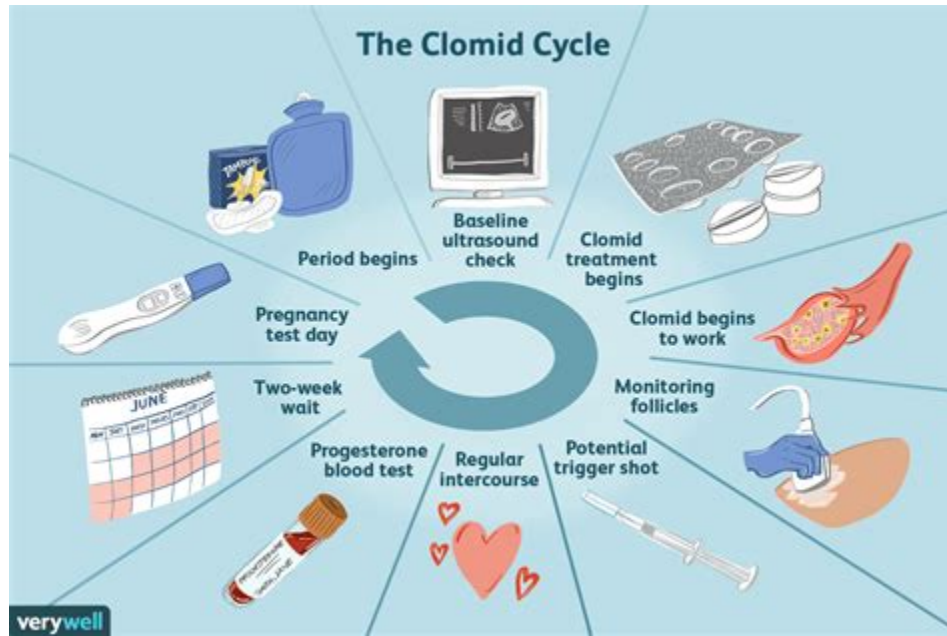
#1 I posted this in another thread, but I figured this would be a valuable piece of info for many. My first (oral) cycle was long, 10 weeks and I had a kitchen sink PCT with clomid/ DAA/ and an OTC PCT. Got my test levels checked 3 weeks into PCT and it was around 250 total.

Clomid: the best PCT to use after steroid cycle - WikiStero



Clomid pills dosage during a steroid cycle: Typically, male bodybuilders should run a relatively low Clomid dosage if you are using this SERM during your steroid cycle. To this end, a daily dosage of 25mg should suffice to keep estrogen-related side effects at bay. However, in a situation where you are running a stack of steroids with .

Clomid Cycle- steroid



Clomid (Clomiphene Citrate) Toremifene Citrate (Fareston) Clomid is considered the more powerful of the three, but with that comes a higher risk of more serious side effects.

Is It Safe To Use Clomid For PCT? (From An Endocrinologist) - Total Shape



Clomid is by far the most popular choice for bodybuilders who are cycling off of steroids/sarms. There's a ton of clinical data that shows the efficacy of using clomid for PCT. For example, Utilizing Clomid for PCT can help bodybuilders and athletes: Restore testosterone levels to normal, maintaining muscle mass gains from their cycle

Clomid Dosage - steroid



In case of bodybuilding, Clomid helps those athletes who have been using anabolic steroids and want to get rid of the side effects (that of conversion of steroids to female sex hormone) and desire to stimulate the natural internal testosterone production after completing their course of steroids.

- <https://groups.google.com/g/iron-fusion/c/QYiULPX5tF8>
- <https://groups.google.com/g/35athlete33/c/iQKeAOHXA08>
- <https://groups.google.com/g/74meathead86/c/Hj9ekmCkO08>