

Clomid is a 50-milligram (ml) pill that is usually taken for five days in a row after day 1 of a female's menstrual cycle. Day 3, 4, or 5 is typical for a Clomid start date. Doctors will.

BUY ANABOLICS ONLINE

100% SECURE

WORLDWIDE SHIPPING

!!! GO TO OUR ONLINE STORE !!!

Post Cycle Therapy: The Best PCT Guide For Beginners (2023)



While Clomid, or Clomiphene Citrate, is traditionally used in the realm of fertility treatments, it's being harnessed by bodybuilders worldwide to optimize their gains and overcome hormonal setbacks after steroid cycles. In this comprehensive blog post, we're about to explore the intriguing concept of a Clomid cycle in bodybuilding.

Is It Safe To Use Clomid For PCT? (From An Endocrinologist) - Total Shape



What is Clomid? Clomid is a non-steroidal fertility medicine. It causes the pituitary gland to release hormones needed to stimulate ovulation (the release of an egg from the ovary). Clomid is used to cause ovulation in women with certain medical conditions (such as polycystic ovary syndrome) that prevent naturally occurring ovulation.

Clomid For Bodybuilding: PCT, Cycling, Muscle Gain - Muscle and Brawn



Clomid is very effective, stimulating ovulation 80% of the time. Note: Clomid can also be used as a treatment for male infertility. This article focuses on Clomid treatment for female infertility. Uses Clomid is often the first fertility treatment used if a person has irregular cycles or anovulatory cycles (menstruation without ovulation).

Clomid Uses, Dosage & Side Effects - Drugs



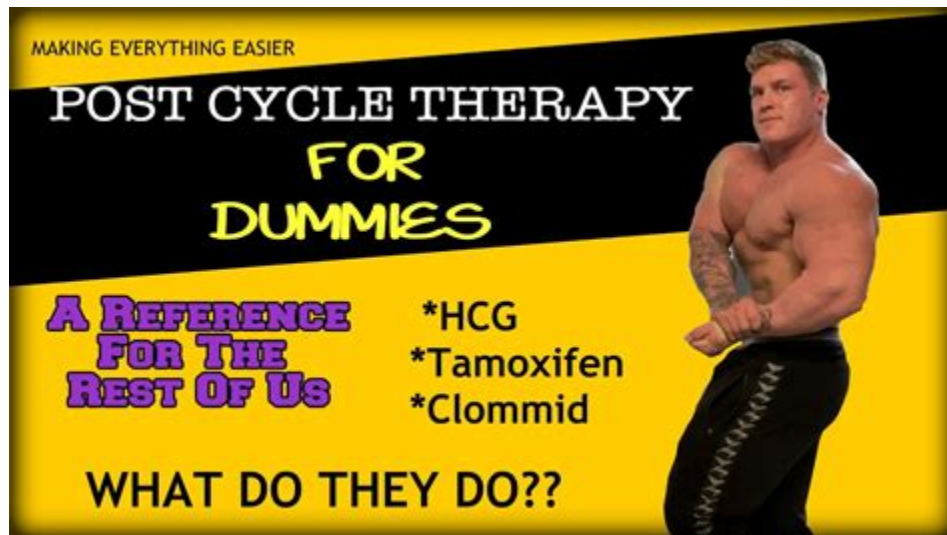
Clomid PCT (post cycle therapy) is a common practice among bodybuilders and athletes who use anabolic steroids or selective androgen receptor modulators . When an individual undergoes a steroid cycle or SARM cycle, it often suppresses their natural testosterone production. . While Clomid is available from some sources without a prescription .

Post-Cycle Therapy | The Ultimate Guide to PCT - Testosterone



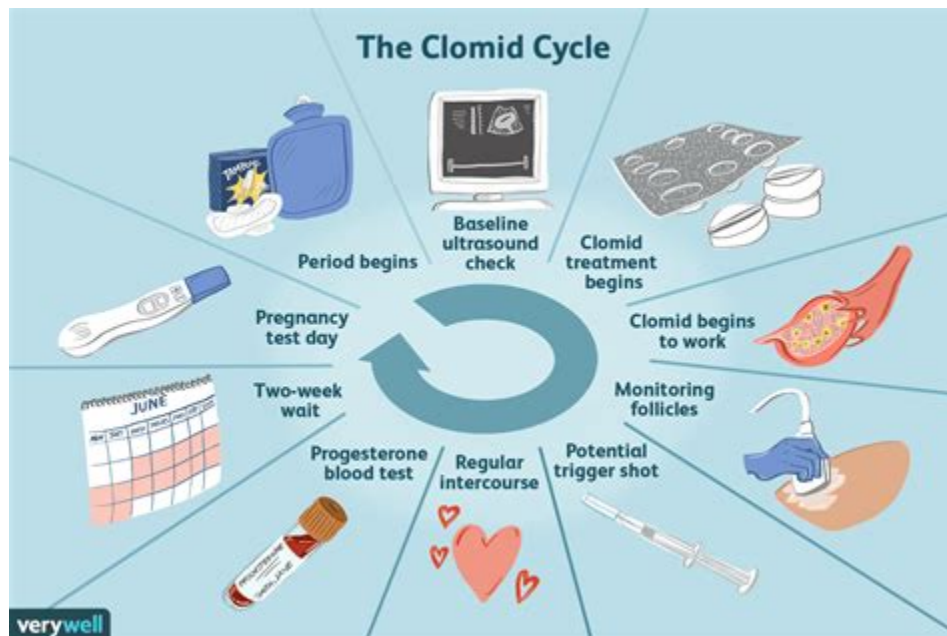
The same study found that 46 percent of women ovulated when given 50 mg of Clomid a day, while another 21 percent ovulated on 100 mg and a few more (8 percent) when the dose was 150 mg. . your physician will monitor if and when ovulation takes place. You can track your own menstrual cycle (yup, there are apps for that!) or pick up an .

Clomid during cycle : r/PEDs - Reddit



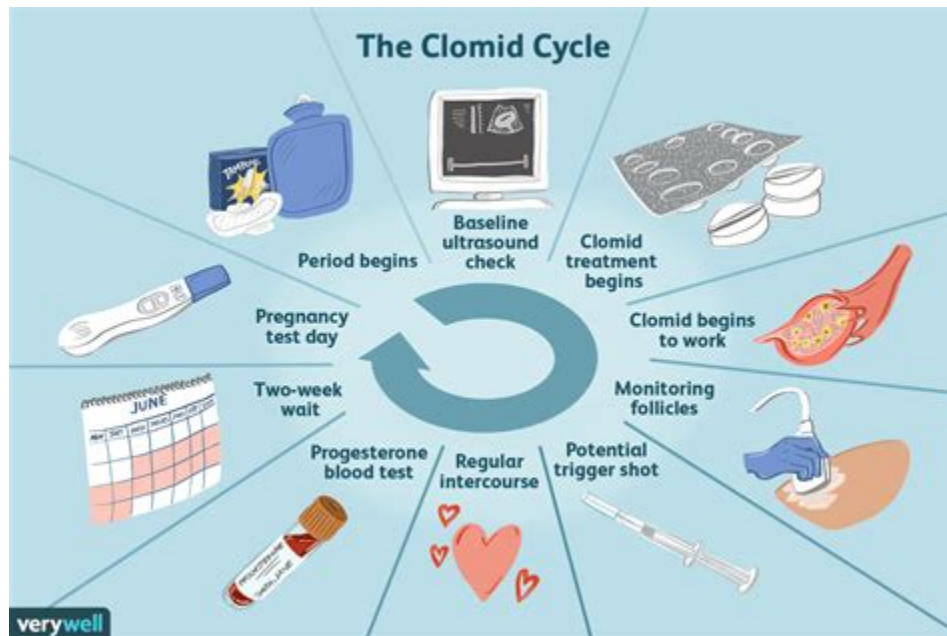
Post-cycle therapy is a specific protocol that bodybuilders and other athletes use after they stop using anabolic steroids and other performance enhancing drugs. Some of the most popular post-cycle therapy products include nolvadex, clomid, and HCG injections. However, many users are reporting excellent results from some of the newer post-cycle .

Clomid Resistance and Improving Ovulation Response - Verywell Family



The first pill of Clomid is usually started 2 to 5 days after the first day of your menstrual bleeding (cycle day 2-5) and ovulation usually happens 5-9 days after the last dose of Clomid. Improve your fertility and get pregnant faster Obie is your reproductive health coach, helping you reach your goal with expert personalized guidance.

How to Take Clomid for Infertility - Verywell Family



In the world of bodybuilding, Clomid is highly prized for its ability to mitigate estrogenic side effects caused by many steroids during a cycle, as well as for combating the suppression of natural testosterone as a result of using steroids, which is the main goal of its use in post cycle therapy.

Clomid Frequently Asked Questions and Answers - TLC fertility



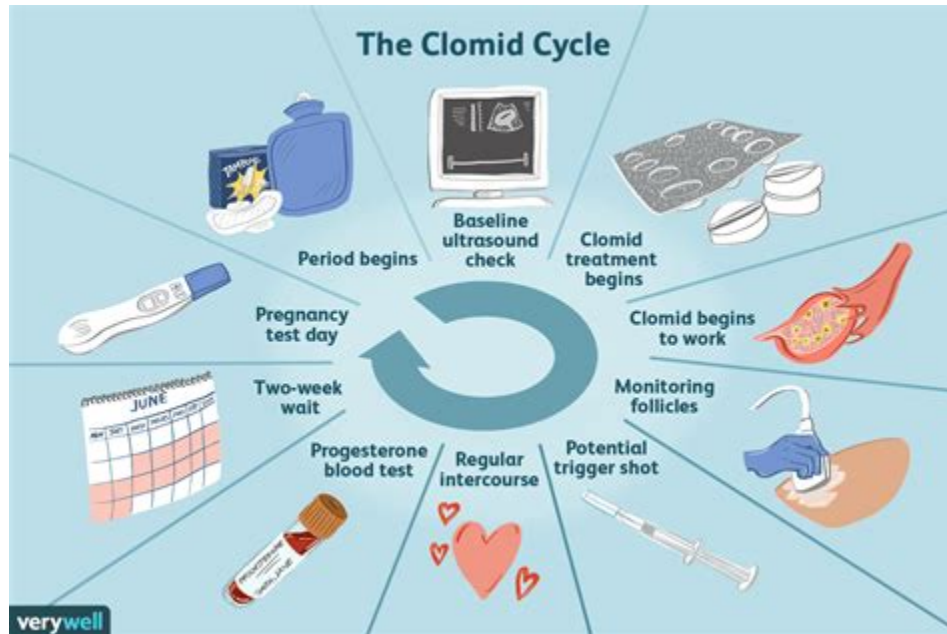
how to take
CLOMID

to get pregnant

**everything you ever
wanted to know!**

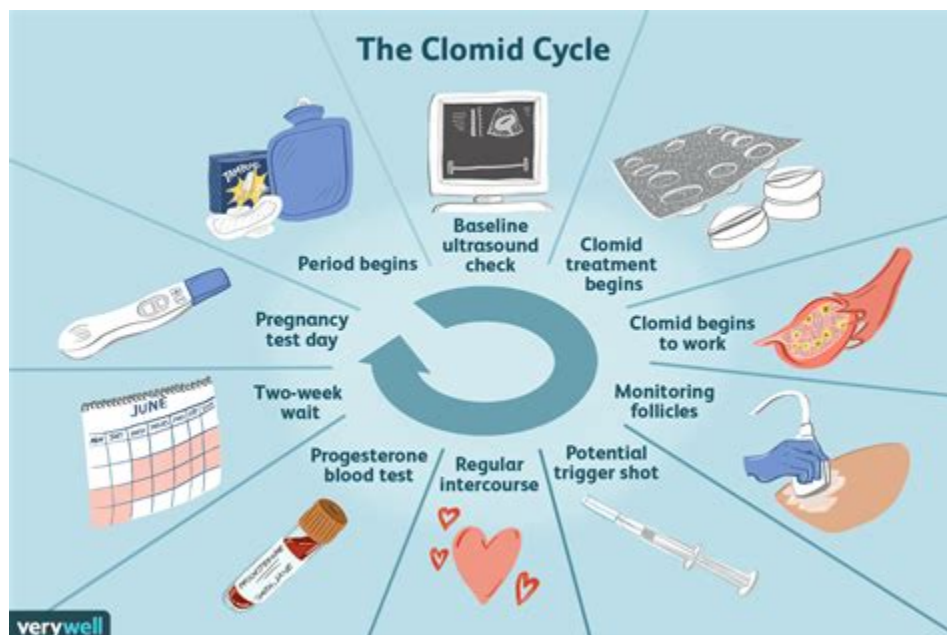
Who should take it? Clomiphene cycles are often prescribed because of the low cost. Some physicians prescribe it without considering the individual circumstances of infertility. While some women with fertility problems will benefit from such random administration, many might only experience side effects!

How Does Clomid Work: Treating Infertility - Healthline



#1 I posted this in another thread, but I figured this would be a valuable piece of info for many. My first (oral) cycle was long, 10 weeks and I had a kitchen sink PCT with clomid/ DAA/ and an OTC PCT. Got my test levels checked 3 weeks into PCT and it was around 250 total.

Clomid during cycle - AnabolicMinds



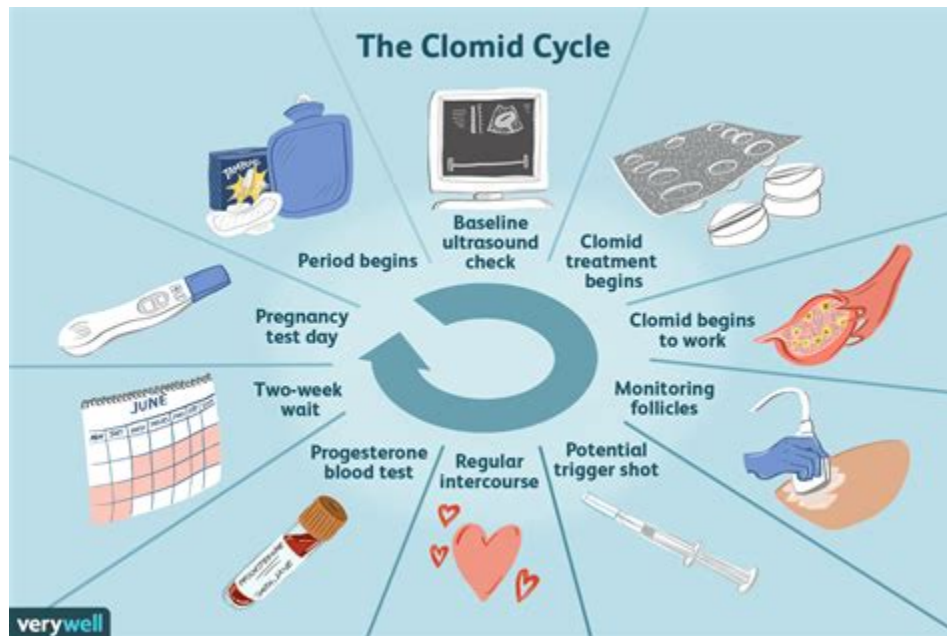
Typically, people taking Clomid are given a dose of one 50 milligram pill once daily for 5 days starting on day 3, 4, or 5 of their menstrual cycle. The first day of bleeding is called cycle day 1. Ovulation usually occurs days 14 to 19 of the cycle. What Is the Clomid Success Rate for Ovulation and Pregnancy? Cycle Day 1: Your Period Begins

Clomid - Everything you need to know to make it work - babyMed



You can follow this scheme for Clomid administration. Extra-heavy does period - Take 150mg of the medication for 3 days, then 100 mg for 12 days, followed by 50 mg for 15 days, and then 25 mg for another 15 days. ; After heavy dose period - In this stage, you need to take Clomid 100 mg for 15 days, followed by 50 mg for 15 days, and then 25 mg for 15 days.

Clomid PCT (Post Cycle Therapy) Protocol: What to Know | Ro



Your doctor will likely instruct you to take Clomid at the beginning of your menstrual cycle, typically between days 3 and 5. You'll then take one pill a day for five days. Then, you'll live your life as normal until your next cycle is about to begin. If you're still not pregnant, your doctor may recommend another course of Clomid.

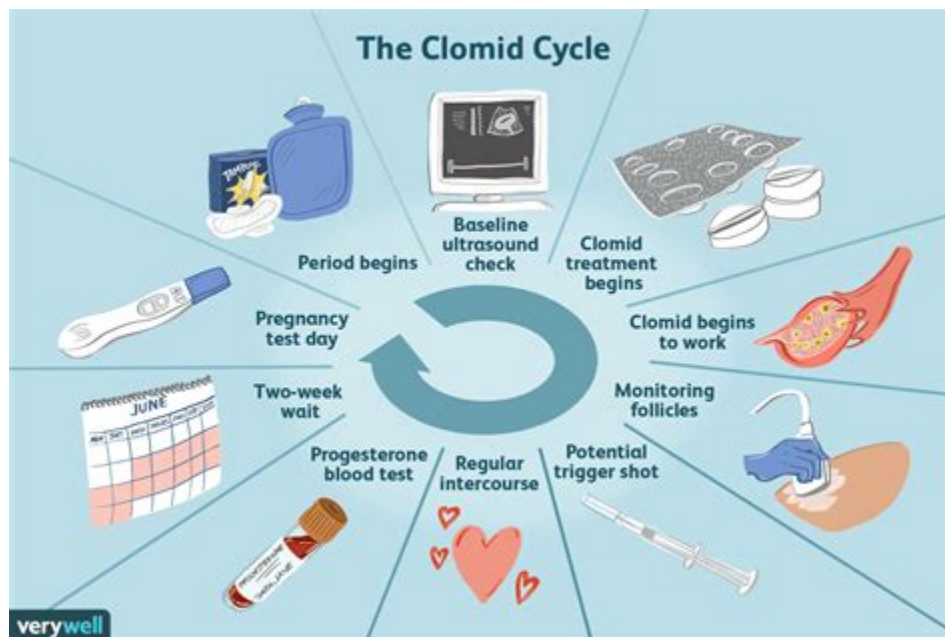
Clomid: Optimize Bodybuilding Gains during a Cycle



Clomid is a cheap and easy way of naturally increasing T due to the T inducing feedback loop it

impacts. Using it to fight nonexistent suppression is pointless, but using it to boost T while on a SARM cycle. . uldn't hurt I suppose.

What Is Clomid and How Does It Treat Infertility? What to Know



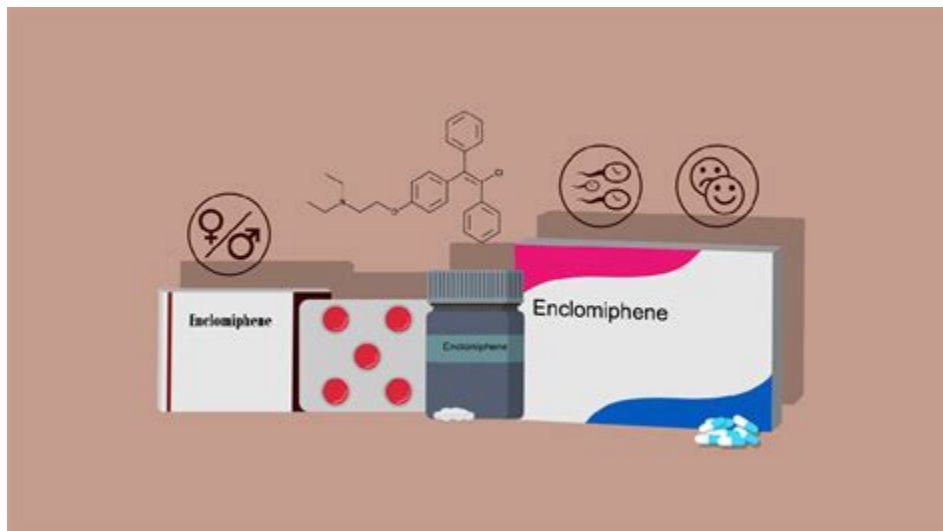
Some men take Clomid during cycle as a SERM (selective estrogen receptor module) to prevent estrogen from binding to receptors. This isn't as common as taking a SERM such as Nolvadex, and honestly neither of the two are really the best method anymore since the introduction of aromatase inhibitors.

Clomid PCT (Clomiphene Citrate PCT Guide) - Steroid Cycles

Weeks	Stanozolol	Nan D	Clomid
1	20mg/day	200mg/week	
2	30mg/day	200mg/week	
3	40mg/day	200mg/week	
4	50mg/day	400mg/week	
5	50mg/day	400mg/week	
6	40mg/day	200mg/week	
7	30mg/day		
8	20mg/day		
9			100mg/day
10			50mg/day
11			50mg/day
12			50mg/day
Total	200tabs	8ml	40tabs

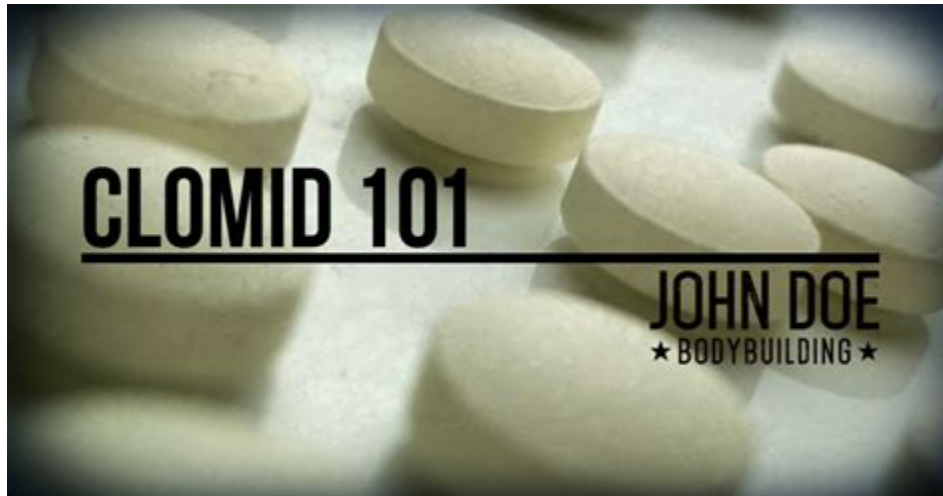
Post cycle therapy, or PCT, is a protocol you follow after (or "post") completing a cycle of anabolic steroids, a type of performance-enhancing drug (PED). While some PEDs can offer benefits such as muscle growth, they may also wreak havoc on other aspects of your physical health — especially your testosterone levels.

Enclomiphene: Review, PCT, Side Effects, Cycle - Muscle and Brawn



When on a cycle of SARMs or steroids, your natural testosterone levels might dip, so a post cycle therapy is meant to bring them back to normal. Common PCT's include Nolvadex, Clomid Therapy, and other testosterone boosting ingredients. The PCT you'll want to take will vary, depending on the length of your cycle, and what you were on during .

Clomid 101 - John Doe Bodybuilding



Treatment Birth Control Pills Other Options About one in four women will not ovulate when taking Clomid. Sometimes, the reason you may not ovulate on Clomid is because the dosage is too low. It's common to start Clomid treatment at 50mg, and then increase to 100mg if you don't respond. In some cases, doctors will try doses up to 250mg.

How Does Clomid Work? Answers to All of Your Clomid FAQs - ORM Fertility



ALL ABOUT CLOMID

Clomid was introduced in 1967 and has a long track record of success. The job of Clomid is to induce ovulation, and since you can't get pregnant without ovulating, that's pretty important! It is the first choice in treating fertility problems.



What are the odds of Clomid working?



Remember, Clomid doesn't make you pregnant. Clomid forces you to ovulate. Here are its success rates

80%

of women will ovulate within 3 months

40%

of women will conceive within 3 months

What are my chances of having Clomid twins?

While it seems there are scores of 'Clomid twins' out there, you really only have a

10%

chance of having twins on Clomid, up from

3-4%

naturally.

What are the side effects of Clomid?

Mood swings
Dizziness
Nausea
Breast tenderness
Hot flashes



When is Clomid taken?

DAY

3 4 5 6 7

DAY

4 5 6 7 8

DAY

5 6 7 8 9

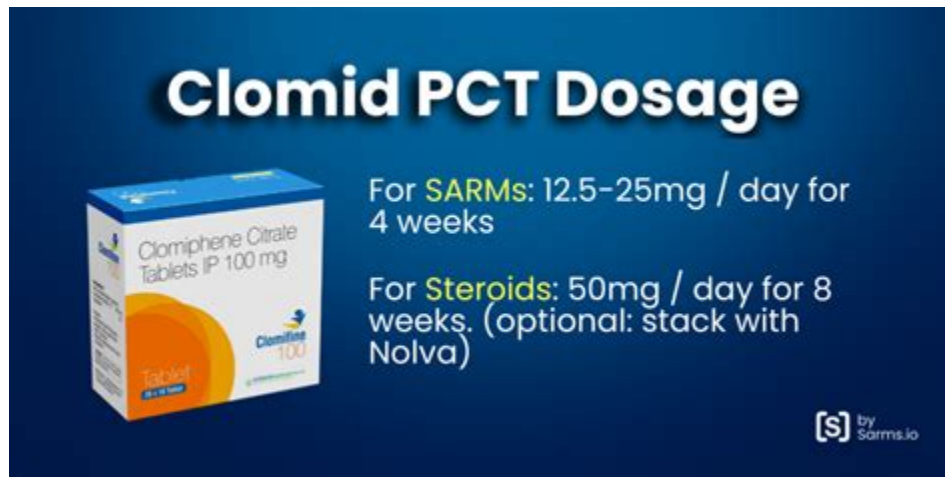
Yes, it's relatively safe to use Clomid after a steroid cycle. Even though it's safe for the most part, its use and misuse can have some side effects. During a steroid cycle, your body naturally dials down its natural testosterone-producing functions because it receives testosterone from an external source. According to the Addiction Center .

Post Cycle Therapy (PCT): The Ultimate Guide - Steroid Cycles



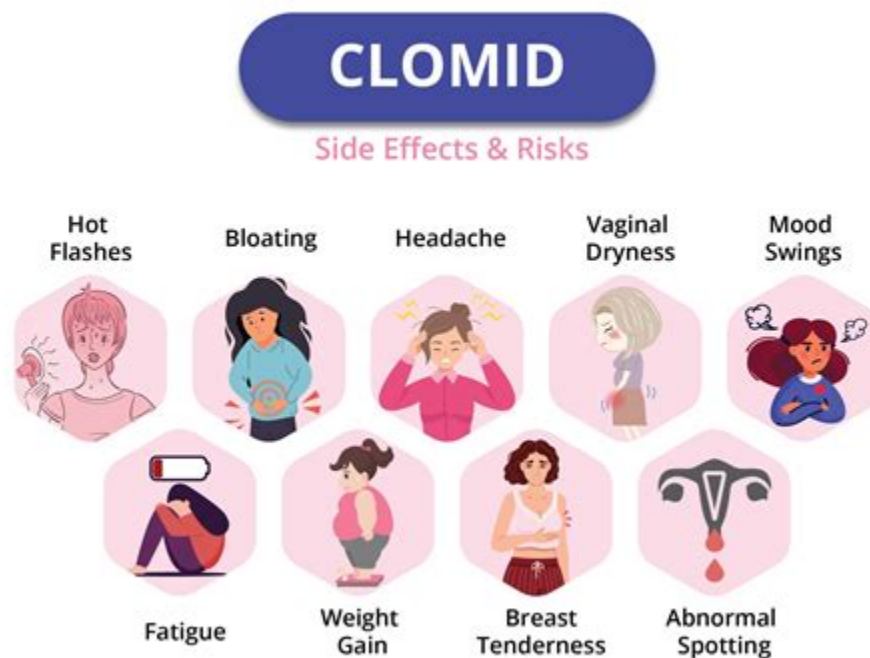
While further trials are definitely necessary, Enclomiphene currently only has two known side effects, diarrhea and nausea. The list of side effects for Clomid is way more plentiful. One more thing about Enclomiphene, some studies do show or at least suggest that it will lower IGF-1 levels in the body (11).

Clomid PCT: Best Post Cycle Therapy After SARMs / AAS



Clomid's (clomiphene citrate) primary purpose is to induce ovulation in women who are either not ovulating or ovulating irregularly. Between 70% and 80% of women will resume ovulation from treatment with Clomid. Of course, ovulation is only step one. Your chance of getting pregnant over several cycles of Clomid use is approximately 30%.

Clomid (Clomiphene): Side Effects, Risks, Success Rates - Verywell Family



Starting Clomid in post-cycle therapy two weeks after your steroid cycle ends is most recommended. However, if you're using a testosterone ester with a shorter half-life (Propionate, for example), then Clomid can be started as soon as five days after the end of your cycle. . Clomid is considered very strong, while Nolvadex is weaker, so .

- <https://colab.research.google.com/drive/1JqYRckAH68W2cFT4KIJHNMkMnMjxaZRi>
- <https://groups.google.com/g/aasguide/c/ExRlu00OCWI>
- <https://player.soundon.fm/p/5a3f9cfe-9f95-4c70-8940-a15e636a2ade>