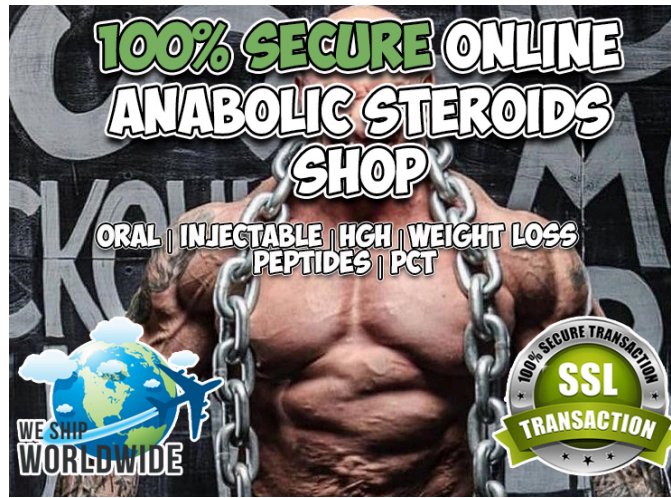




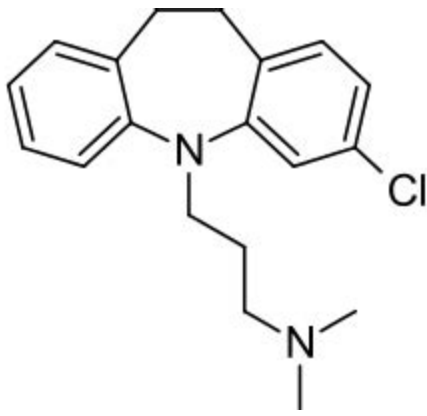
Norditropin Nordilet 10mg 1.5ml Online Steroid Sales #EpNlz6B0



CLICK HERE TO SHOP ONLINE: <https://bit.ly/2VIHKIg>



Norditropin® NordiLet® 10 mg/1.5 ml Somatropin solution for injection 2. What does Norditropin®. Buy NORDITROPIN NORDILET 10MG/1.5ML. NORDITROPIN NORDILET 10MG is used to treat growth hormone deficiency in children (to replace growth hormone that they are unable to produce enough of naturally) and to correct growth failure in children born small for gestational age (SGA) who do not catch up in growth by 2 years or later.



10 mg/1.5 mL. 4 mg. 0.05 mg. 15 mg/1.5 mL. 8 mg. 0.1 mg. 30 mg/3 mL. 8 mg. 0.1 mg. It's easy to select the appropriate dose: just turn the dial to the correct amount. You can adjust the dose up or down. And it makes a different clicking sound when dialing up or down.. Norditropin ® may cause serious.



Norditropin NordiFlex 10 mg/1.5 ml is a multidose injection pen pre-filled with human growth hormone solution. You can use the dosage selector to select any dose from 0.05 to 3.00 mg, in increments of 0.05 mg. Your doctor will decide the correct dose for you. [more hints](#)



Norditropin NordiFlex is a clear and colourless solution for injection in a multidose disposable 1.5 ml pre-filled pen. 1 ml of solution contains 3.3 mg somatropin. 1 mg of somatropin corresponds to 3 IU of somatropin. Norditropin NordiFlex is available in three strengths: 5 mg/1.5 ml, 10 mg/1.5 ml and 15 mg/1.5 ml (equivalent to 3.3 mg/ml, 6.7).

Initiate Norditropin with a dose of approximately 0.2 mg/day (range, 0.15 mg/day to 0.3 mg/day) and increase the dose every 1-2 months by increments of approximately 0.1 mg/day to 0.2 mg/day, according to individual patient requirements based on the clinical response and serum insulin-like growth factor 1 (IGF-1) concentrations.



Norditropin NordiLet 10mg/1.5ml (HGH) Norditropin NordiLet 10mg/1.5ml (HGH) EUR 250.00. In stock -+ Add to cart . Be the first to review this item. Pharmacodynamics. Norditropin NordiLet stimulates skeletal and somatic growth, and also has a pronounced effect on metabolic processes. Norditropin® NordiLet® is a clear and colourless solution for injection in a multi-dosed disposable 1.5ml pre-filled pen. Norditropin® NordiLet® contains several doses of growth hormone solution, and a dose is injected into the skin every evening. Norditropin® NordiLet® is available in three strengths: 5mg/1.5ml, 10mg/1.5ml and 15mg/1.5ml (i.e. 3.3mg/ml, 6.7mg/ml and 10mg/ml).



Norditropin® nordilet® 10mg/1.5mL rastvor za injekciju u napunjenom injekcionom peni. H01AC01; somatotropin; PDF Uputstvo za pacijenta PDF Sažetak karakteristika o leku. Osnovne informacije. Lista RFZO. A - Lekovi koji se propisuju i izdaju na obrascu lekarskog recepta. Indikacija za RFZO. [go here](#)