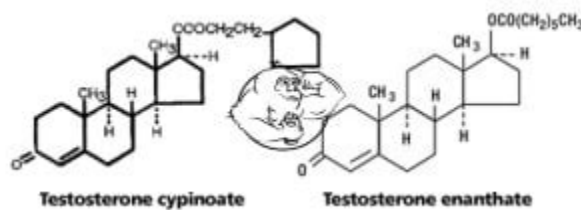


The maximum detection time for Testosterone suspension half-life is 14 days in plasma and 18 days in urine. These results suggest that the current plasma and urine thresholds could still be used to detect the use of Testosterone Suspension even when given at a lower dose. The detection time of various Testosterone esters differs based on their .



?? VISIT OUR SHOP ??

### Testosterone esters - Evolutionary



The half life of testosterone cypionate is around 12 days. This means that 12 days from your last shot of 1000mg of testosterone cypionate (Time to start PCT? You decide. ), your blood levels of testosterone cypionate will contain 500mg of the steroid.

## Public Lab: Print



Evidence Based What Are Steroid Half-Lives? What Is a Half-Life? The concept and idea of a half-life and half-lives is extremely important to the understanding of not just anabolic steroid use, but the use of any drugs, substances, and even foods that are consumed.

## Testosterone Esters: Learning Everything About Each One of Them



Testosterone Phenylpropionate Half Life - Testosterone Suspension Cycle Guide - Steroid Cycles. Being pure testosterone, it comes with a very short half life at as little as two hours and therefore requires regular injections to maintain blood For this reason it is not as widely used as the more common ester forms of testosterone which can be injected much less Testosterone Suspension Cycle Guide

## Testosterone 101 - Evolutionary



Testosterone propionate possesses a half-life of roughly 2-3 days. Therefore, testosterone propionate does not provide a sustained release. Due to this short half-life, it must be injected every third or fourth day. As a result, it isn't as commonly used for TRT. Testosterone Undecanoate Testosterone Undecanoate is available as brand name AVEED®.

## **Testosterone Half-Life | Uses, Dosage, Benefits, Side Effects And .**



**BIOTECH**  
PEPTIDES

**SERMORELIN**  
**IPAMORELIN**

Store at -20C to 4C

**5/5MG**



FOR RESEARCH ONLY



(tablets or depot taken orally) 9 hours Depot steroids Drug Active half-life Deca -durabolin (Nandrolone decanate) 14 days Equipoise 14 days Finaject (trenbolone acetate) 3 days Primobolan (methenolone enanthate) 10. 5 days Sustanon or Omnadren 15 to 18 days Testosterone Cypionate 12 days Testosterone Enanthate 10. 5 days

## Steroid Half-Lives - Understanding Dosing, Administration & Usage

	Glucocorticoid	Approximate Equivalent Dose (mg)	Relative Anti-inflammatory (Glucocorticoid) Potency	Relative Mineralocorticoid (Salt-Retaining) Potency	HPA Suppression	Half-Life (Hours)
Short-Acting	Cortisone	25	0.8	0.8	1	8 to 12
	Hydrocortisone	20	1	1		8 to 12
Intermediate-Acting	Methylprednisolone	4	5	0.5	4	12 to 36
	Prednisolone	5	4	0.8		12 to 36
	Prednisone	5	4	0.8	4	12 to 36
	Triamcinolone	4	5	0	4	12 to 36
	Fludrocortisone	-	0	125	12	24 to 36
Long-Acting	Dexamethasone	0.75	25	0	17	36 to 54
	Betamethasone	0.6 to 0.75	25	0		36 to 54

Allergy Asthma Clin Immunol. 2013;9 (1):30.

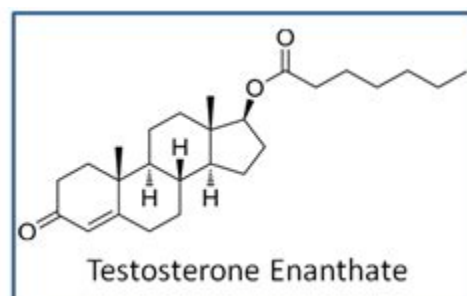
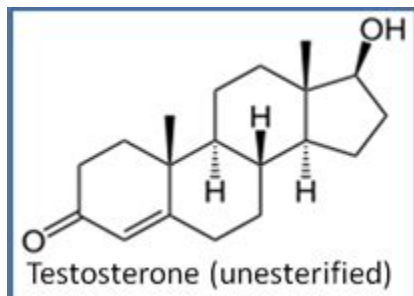
Dosing range: 10 to 70 mg/day; maximum: 70 mg/day. Testim: Initial: 50 mg applied once daily (preferably in the morning) to the shoulder and upper arms. If testosterone concentrations are less than the normal range, dosage may be increased from 50 mg to 100 mg once daily; maximum: 100 mg/day.

## Gold Standard TRT - The Men's Health Clinic



For example, both testosterone enanthate and trenbolone enanthate will have a half-life of about 10. 5 days. Is Ester and Half-Life the Same Thing? Many people mistakenly use these two terms interchangeably.

## PDF Testosterone Types and Variants The Primary Testosterone Esters



Feb 25, 2016 #2 I had a link to one but I don't want to post it. Here is what it says. Don't know how accurate they all are. Below a list of half-life's of the most commonly used steroids, esters and ancillary compounds. Oral steroids Drug Active half-life Anadrol / Anapolan50 (oxymetholone) 8 to 9 hours Anavar (oxandrolone) 9 hours

### Understanding Esters, Steroid Active-Life and Half-Life

Drug	Active half-life
Formate	1.5 days
Acetate	3 days
Propionate	4.5 days
Phenylpropionate	4.5 days
Butyrate	6 days
Valerate	7.5 days
Hexanoate	9 days
Caproate	9 days
Isocaproate	9 days
Heptanoate	10.5 days
Enanthate	10.5 days
Octanoate	12 days
Cypionate	12 days
Nonanoate	13.5 days
Decanoate	15 days
Undecanoate	16.5 days

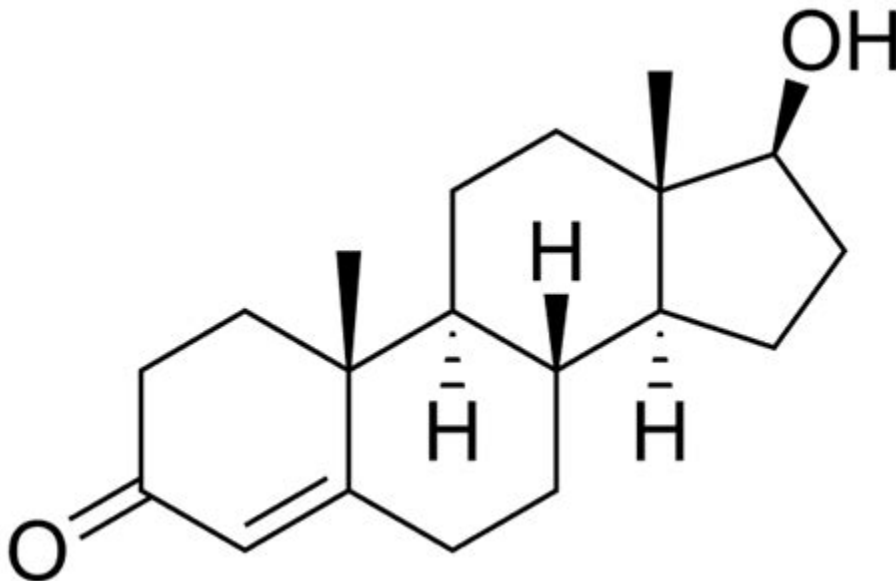
Testosterone Enanthate contains the carboxylic acid ester, enanthic acid. It has a half-life of approximately 7-9 days. According the British National Formulary, a single dose of 250mg Testosterone Enanthate should be injected every 2-3 weeks . According to the manufacturer, a single injection of 250mg leads to an increase in total plasma .

## testosterone esters and their half-life | Evolutionary Steroids .



Testosterone Cypionate is a steroid with a long half-life. 100 mg of testosterone is included in one milliliter. Depending on the individual, it will be given into the system over a period of 1-3 months. This is because it takes your body roughly two weeks to metabolize all of the testosterone in each milliliter.

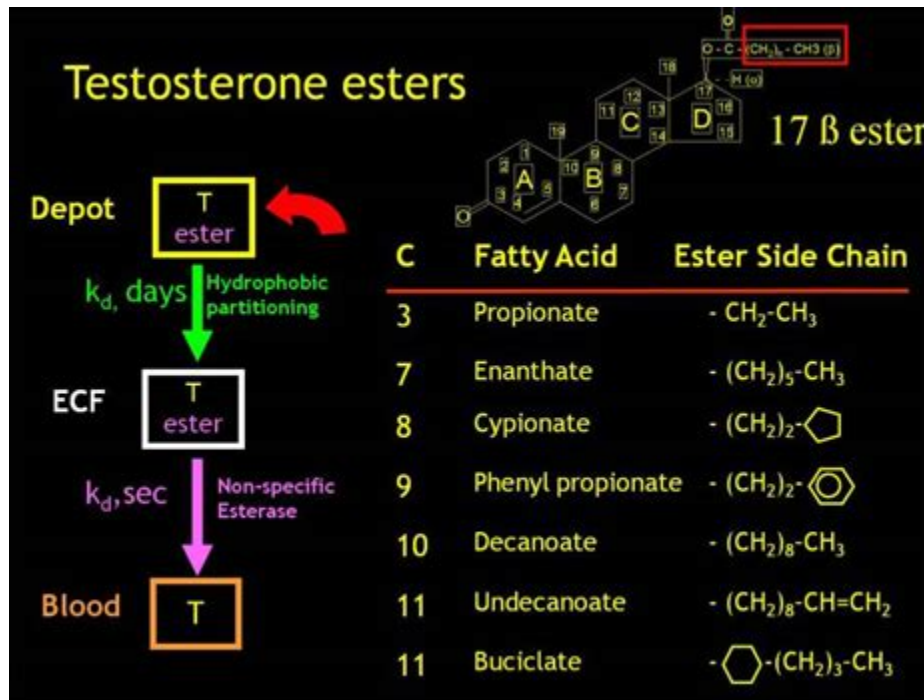
### Androgen ester - Wikipedia



1. Testosterone Enanthate: Testosterone Enanthate is perhaps the most popular and most widely used esterified variant of Testosterone. This is due in large part to its longer half-life and extended window of release, which allows for more convenient injection administration protocols.



## Testosterone Ester - an overview | ScienceDirect Topics



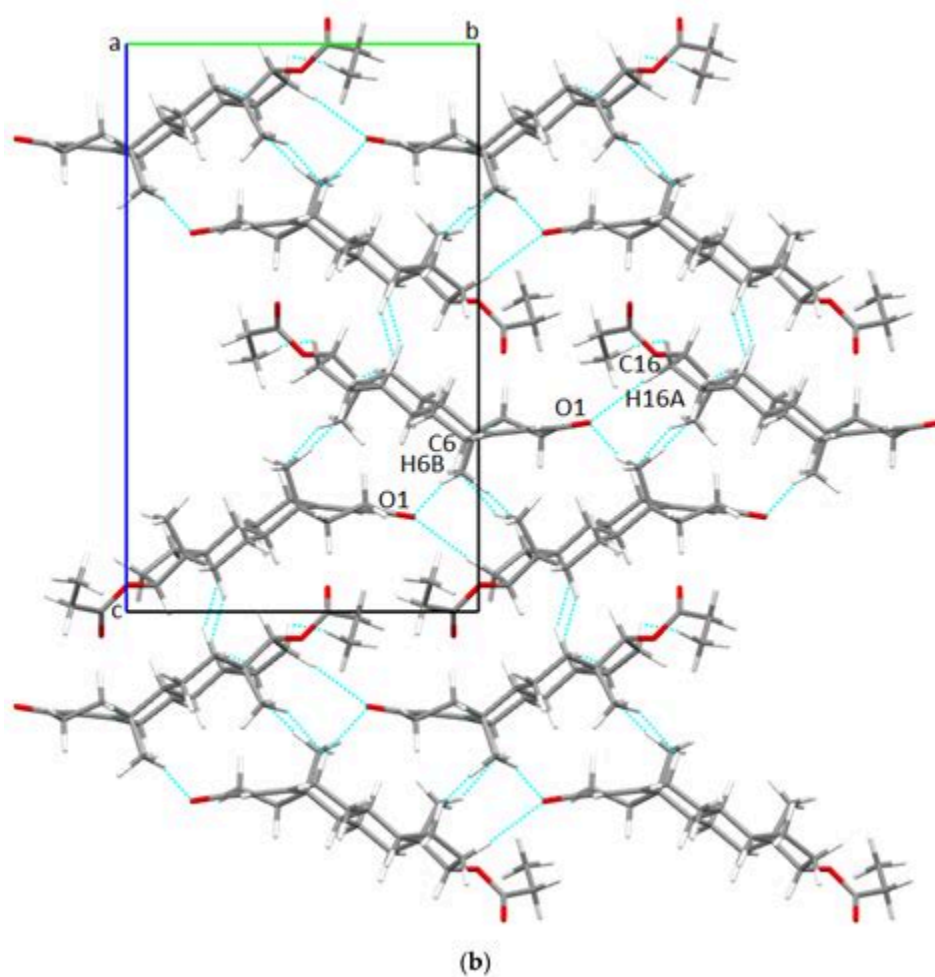
The half life of testosterone cypionate is around 12 days. This means that 12 days from your last shot of 1000mg of testosterone cypionate (Time to start PCT? You decide. ), your blood levels of testosterone cypionate will contain 500mg of the steroid.

### Understanding Esters, Active Life, and Half-Life - Fitnessology



The esterified forms of testosterone possess a half-life ranging from around less than 1 day for testosterone acetate, 1 day for propionate, 2.5 days for phenylpropionate, and up to 3.1 days for testosterone isocaproate [ 11 ].

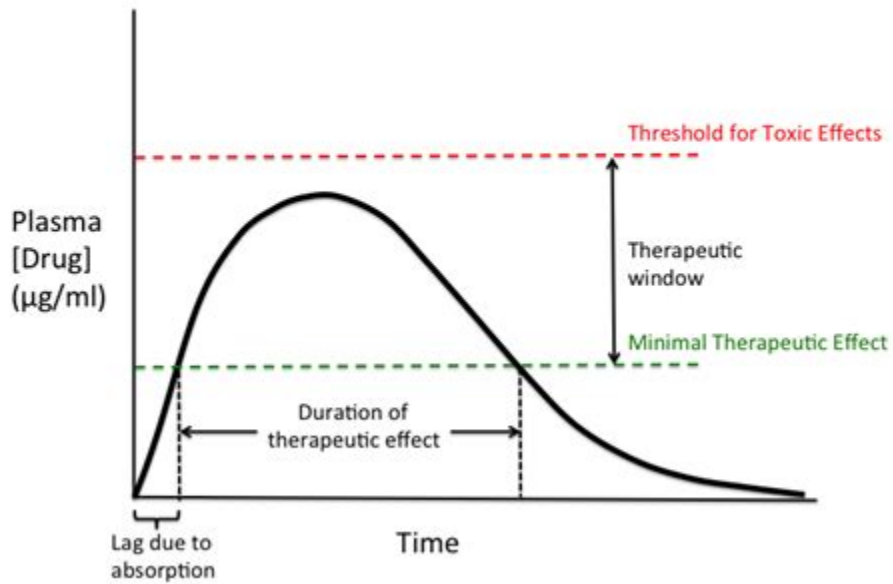
## Structural Aspects and Intermolecular Energy for Some Short .



Context. Injections with intramuscular (IM) testosterone esters have been available for almost 8 decades and not only result in predictable serum testosterone levels but are also the most inexpensive modality. However, they are difficult to self-administer and associated with some discomfort. Recently, subcutaneous (SC) administration of .

# Testosterone: Dosage, Mechanism/Onset of Action, Half-Life - Medicine

## Time Course of Drug Action (Oral)




For purposes of comparison with normal physiological circumstances, circulating levels of total testosterone in men range from about 250 to 1,100 ng/dL (mean 630 ng/dL) and in women range from about 2 to 50 ng/dL (mean 32 ng/dL). [4] [5] [6] [7] Testosterone levels decline with age in men. [8]

## Common Esters Available for Testosterone Injections - TransformYou

**TESTOSTERONE INJECTIONS**

<b>PROS</b>	<b>VS</b>	<b>CONS</b>
Cost is cheaper compared to gel		Self injecting can be daunting or sometimes uncomfortable
Lower frequency of weekly or biweekly (as opposed to daily)		Some people might feel highs and lows in energy at different times in their shot cycle
Changes can be faster		Requires a bunch of supplies (all of which we send to you, though)



**LOW DOSE: 0.1 ML WEEKLY**  
**AVERAGE DOSE: 0.3ML WEEKLY**  
**HIGH DOSE: 0.5ML WEEKLY**

Examples of androgen esters include testosterone esters such as testosterone cypionate, testosterone enanthate, testosterone propionate, and testosterone undecanoate and nandrolone esters such as nandrolone decanoate and nandrolone phenylpropionate . See also List of androgen esters List of androgens/anabolic steroids Steroid ester Estrogen ester

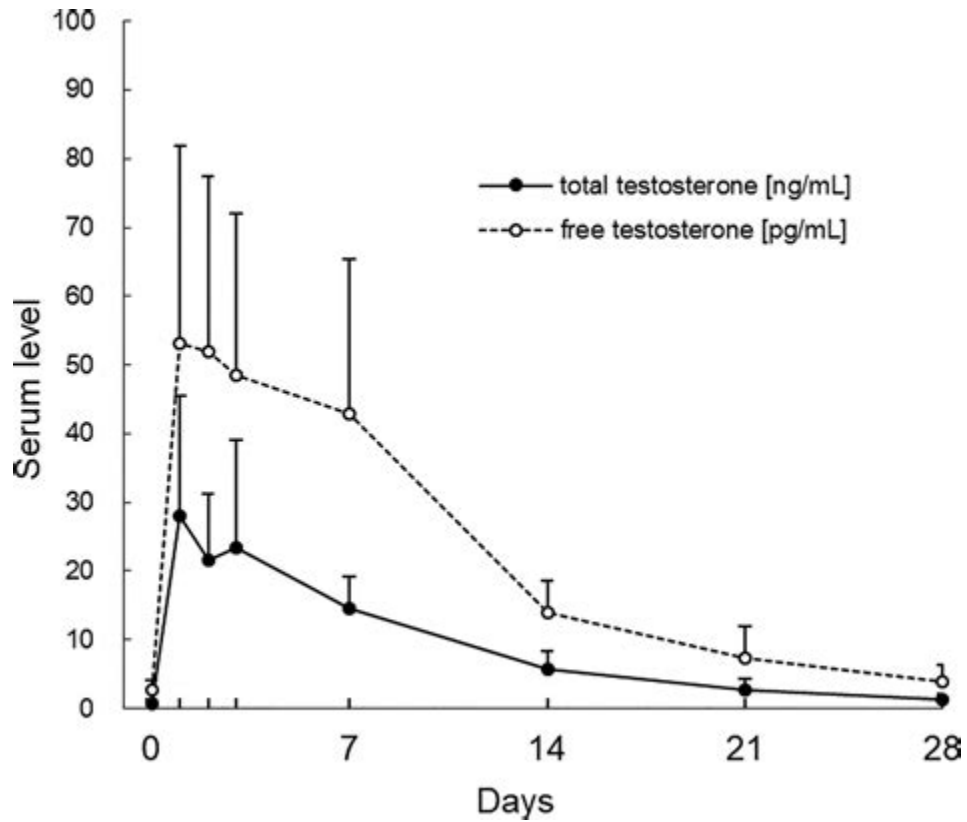
### Testosterone Esters: The guide to understanding the esters in your .



**FIGURE B.**

Half lives of testosterone esters are as follows: Sustanon/Omnadren 15 days Cypionate 12 days Enanthate 10. 5 days Propionate 3. 5 days Suspension 1 day or less Phenylpropionate 4. 5 days Isocaproate 9 days

## Pharmacokinetics of testosterone - Wikipedia



Testosterone half-life refers to the time it takes for the concentration of testosterone in the bloodstream to decrease by half. It is a crucial parameter in understanding how long the hormone remains active in the body. How does the choice of testosterone ester impact half-life? Different testosterone esters, such as enanthate, cypionate, and .



## Understanding Esters, Active-Life and Half-Life Steroid Half life's

### Steroid esters:

Drug	Active half-life
Formate	1.5 days
Acetate	3 days
Propionate	4.5 days
Phenylpropionate	4.5 days
Butyrate	6 days
Valerate	7.5 days
Hexanoate	9 days
Caproate	9 days
Isocaproate	9 days
Heptanoate	10.5 days
Enanthate	10.5 days
Octanoate	12 days
Cypionate	12 days
Nonanoate	13.5 days
Decanoate	15 days
Undecanoate	16.5 days

Each ester has a specific half-life AND a specific ester weight making up a specific hormone to ester ratio in your "1 gram" of steroid. In this case with the enanthate, the ratio was 7:3. . Testosterone Ester Report One of the most misunderstood subjects in the world of steroids is the ester--the mechanism by which injectable esterified .

## Understanding Esters, Active-Life and Half-Life

Medscape® [www.medscape.com](http://www.medscape.com)

### Half-life

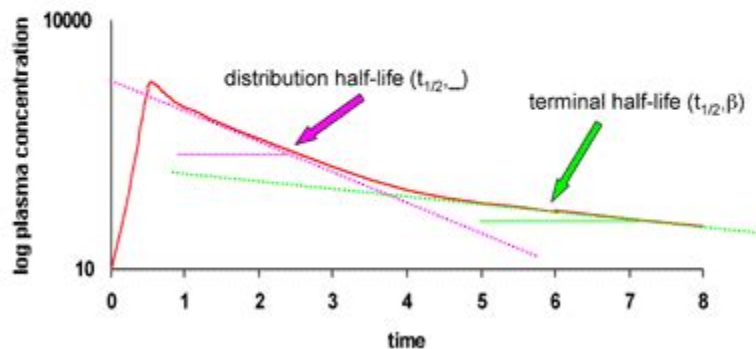


Table of Contents Steroid Half-Lives: A Simple Explanation In the medical and pharmaceutical world,

the half life of a drug is a concept of great importance and interest.

## Steroid Half-Lives: The Ultimate Guide - Steroid Cycles

Weeks	Stanozolol	Nan D	Clomid
1	20mg/day	200mg/week	
2	30mg/day	200mg/week	
3	40mg/day	200mg/week	
4	50mg/day	400mg/week	
5	50mg/day	400mg/week	
6	40mg/day	200mg/week	
7	30mg/day		
8	20mg/day		
9			100mg/day
10			50mg/day
11			50mg/day
12			50mg/day
<b>Total</b>	<b>200tabs</b>	<b>8ml</b>	<b>40tabs</b>

Boys Acute treatment Testosterone may be administered by various routes, preferably by the intramuscular route. One regimen is as follows: Intramuscular Testosterone esters injection: 125 mg followed by two injections each of 250 mg, 3 weeks apart.

## Testosterone Therapy With Subcutaneous Injections: A Safe, Practical .



Methyl-testosterone (active half-life 6-9 hours) Methyl-testosterone does not have an ester, but rather it is methylated for oral use and it is the oldest known oral steroid made. Methyl-testosterone was originally used as a prescription drug to treat men with low testosterone levels, although it fell out of favor and has been replaced with injectables since methyltestosterone is quite liver .

- [https://groups.google.com/g/ifbbbro/c/zLx\\_hVFCSOg](https://groups.google.com/g/ifbbbro/c/zLx_hVFCSOg)
- <https://groups.google.com/g/28powerlifting92/c/LJbzYRa05D4>
- <https://groups.google.com/g/51muscleman41/c/LOXWSouSt1E>