

While an ester is the molecular deviation of a compound that affects the time it takes to release its parent into the body, the half-life is the period of time at which half of the compound has left your body. For instance, the half-life of Anavar is approximately nine to 10 hours.



!!! GO TO OUR ONLINE STORE !!!

Pharmacology of testosterone replacement therapy preparations

TABLE 2
FDA-approved testosterone formulations²

Formulation	Trade names	Dosing, route, and administration	Benefits	Potential adverse effects or drawbacks
Testosterone cypionate, testosterone enanthate		75-100 mg IM every week or 150-200 mg IM every 2 weeks	Short-acting preparation that allows for drug withdrawal in the event of adverse effects	Fluctuation of testosterone levels
Testosterone undecanoate	Aveed	750 mg IM followed in 4 weeks by another 750 mg IM, then 750 mg every 10 weeks thereafter	Steady-state testosterone levels without fluctuation	Long-acting formulation; does not allow for rapid discontinuation of therapy if adverse effects develop
Transdermal and transmucosal testosterone	Androderm (patch)	A single, 2-6-mg patch daily	Most closely mirrors physiologic testosterone levels	May cause skin irritation; risk of transfer to partner or children
	Axiron (axillary)	30-120 mg daily		
	AndroGel, Testim, Vogelxo (gel)	50-100 mg daily applied to shoulders, arms, or abdomen		
	Fortesta (gel)	10-70 mg daily applied to thighs		
	Natesto (intranasal)	11 mg 3 times daily		
Oral testosterone	Striant (buccal)	30 mg every 12 hours	Daily oral dosing	Difficult to obtain normal physiologic levels; risk of hepatotoxicity
	Androxy (fluoxymesterone)	5-20 mg daily in a single or divided doses		
	Android, Methitest, Testred (methyltestosterone)	10-50 mg daily		
Subdermal testosterone pellets	Testopel	150-450 mg implanted subcutaneously every 3-6 months	Long duration of action	Infection at implantation site; explantation

IM, intramuscular.

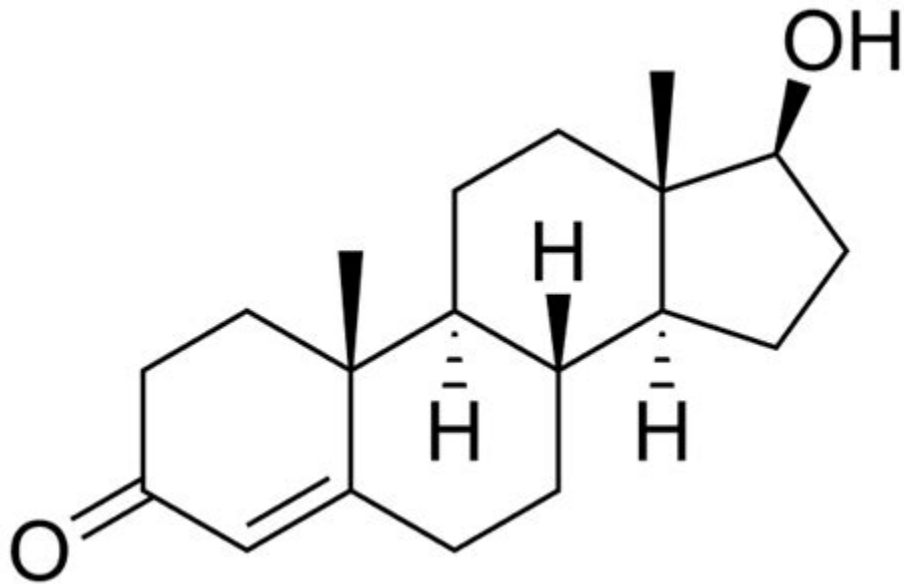
Table of Contents What is Testosterone? Testosterone is the main sex hormone in males which gives you all the characteristics that make you a man. It is mostly produced in the testicles, where it ramps up production beginning at puberty and continuing at full throttle until you're around 30 years old; although this can vary between individuals.

Testosterone Therapy With Subcutaneous Injections: A Safe, Practical .



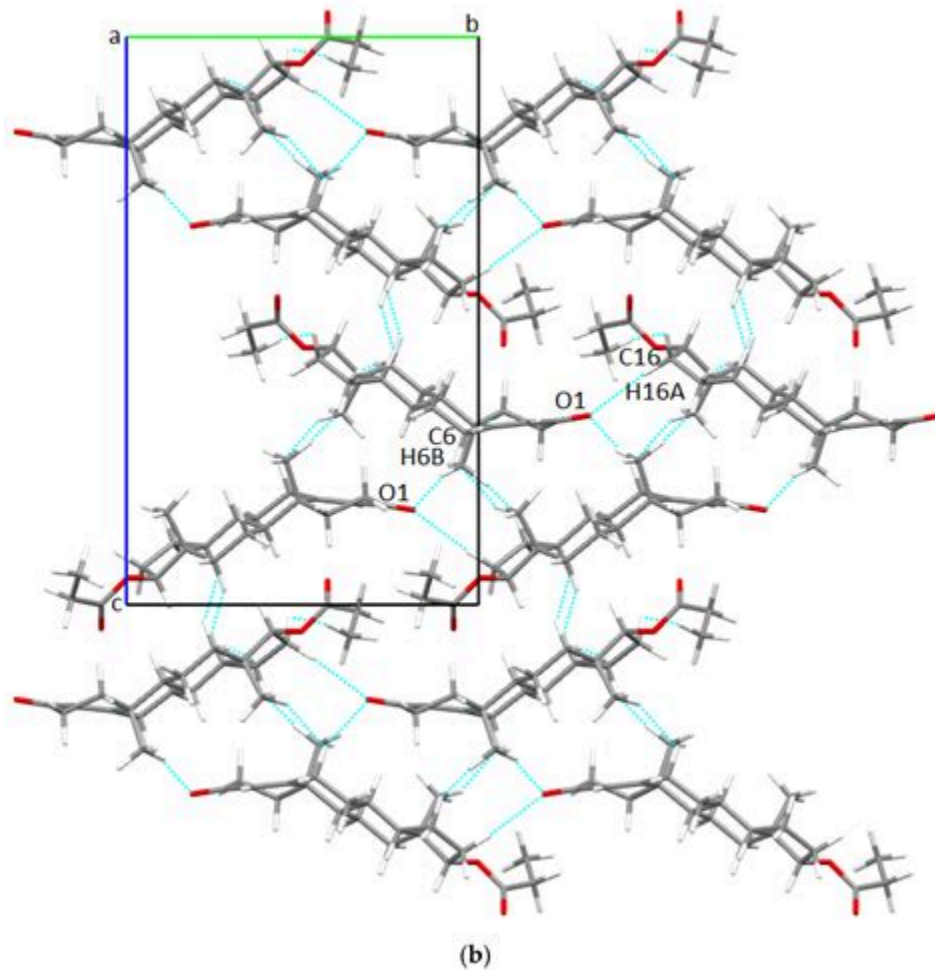
Half lives of testosterone esters are as follows: Sustanon/Omnadren 15 days Cypionate 12 days Enanthate 10.5 days Propionate 3.5 days Suspension 1 day or less Phenylpropionate 4.5 days Isocaproate 9 days

Androgen ester - Wikipedia



Over the next 10 days* (the approximate half-life of the enanthate ester) 350mg of testosterone (HALF of the original hormone we injected) will be unattached from the ester, allowing the body to use the hormone, therefore making the molecules ACTIVE. This release is done periodically yet semi-steady over the 10 days*.

Structural Aspects and Intermolecular Energy for Some Short .



Medical experts stick by this one rule: "Different drugs have different half-lives; however, they all follow this rule: after one half-life has passed, 50% of the initial drug amount is removed from the body."

Testosterone Esters: The guide to understanding the esters in your .



FIGURE B.

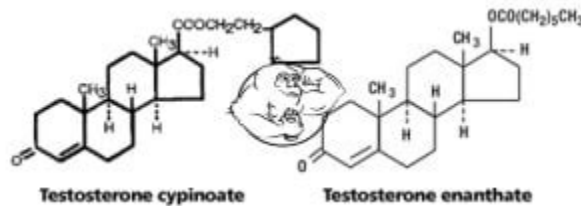
Most begin to occur between 3 to 6 weeks after initiation, but some can take up to 1 year (6). Time-course differences are likely attributed to varying testosterone preparation pharmacokinetics (PKs). Common adverse effects associated with TRT are generally preparation-specific as well.

Testosterone Suspension Half-Life | Lindy Health



Testosterone half-life refers to the time it takes for the concentration of testosterone in the bloodstream to decrease by half. It is a crucial parameter in understanding how long the hormone remains active in the body. How does the choice of testosterone ester impact half-life? Different testosterone esters, such as enanthate, cypionate, and .

Testosterone esters - Evolutionary



The esterified forms of testosterone possess a half-life ranging from around less than 1 day for testosterone acetate, 1 day for propionate, 2.5 days for phenylpropionate, and up to 3.1 days for testosterone isocaproate [11].

Gold Standard TRT - The Men's Health Clinic



1. Testosterone Enanthate: Testosterone Enanthate is perhaps the most popular and most widely used esterified variant of Testosterone. This is due in large part to its longer half-life and extended window of release, which allows for more convenient injection administration protocols.

Testosterone Half-Life | Uses, Dosage, Benefits, Side Effects And .



BIOTECH
PEPTIDES

SERMORELIN
IPAMORELIN

Store at -20C to 4C

5/5MG



FOR RESEARCH ONLY

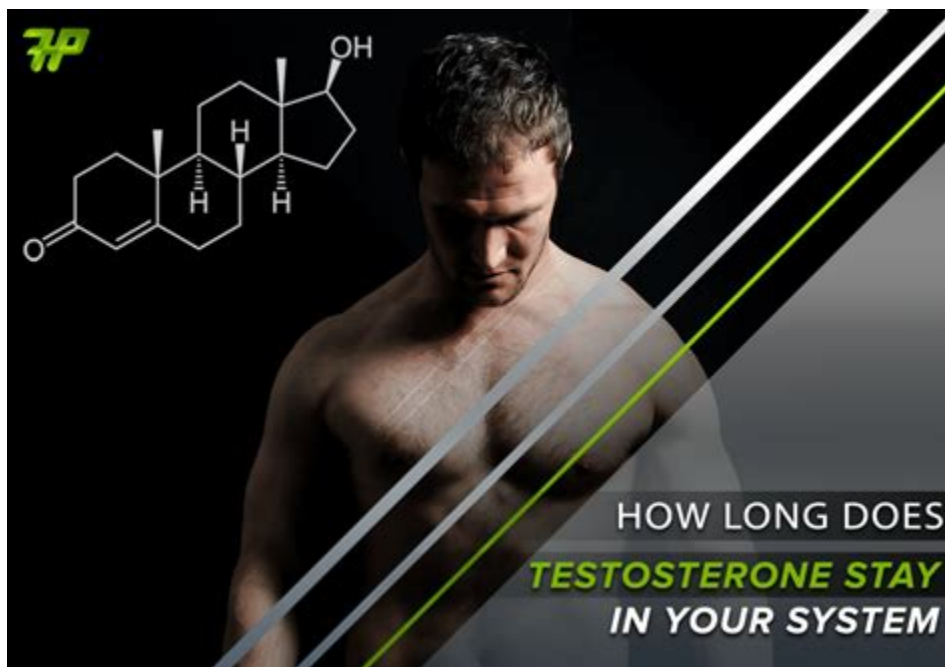
Testosterone cypionate: Reports document that the plasma elimination half-life of testosterone cypionate after intramuscular injection is around 8 days. This means that it'll take slightly over a week to eliminate 50% of the exogenous testosterone from your system.

Understanding Esters, Active Life, and Half-Life - Fitnessology



The maximum detection time for Testosterone suspension half-life is 14 days in plasma and 18 days in urine. These results suggest that the current plasma and urine thresholds could still be used to detect the use of Testosterone Suspension even when given at a lower dose. The detection time of various Testosterone esters differs based on their .

How Long Does Testosterone Stay In Your System? | Lindy Health



An androgen or anabolic steroid ester is an ester of an androgen / anabolic steroid (AAS) such as the natural testosterone or dihydrotestosterone (DHT) or the synthetic nandrolone (19-nortestosterone).

Steroid Half-Lives - Understanding Dosing, Administration & Usage

	Glucocorticoid	Approximate Equivalent Dose (mg)	Relative Anti-inflammatory (Glucocorticoid) Potency	Relative Mineralocorticoid (Salt-Retaining) Potency	HPA Suppression	Half-Life (Hours)
Short-Acting	Cortisone	25	0.8	0.8	1	8 to 12
	Hydrocortisone	20	1	1		8 to 12
Intermediate-Acting	Methylprednisolone	4	5	0.5	4	12 to 36
	Prednisolone	5	4	0.8		12 to 36
	Prednisone	5	4	0.8	4	12 to 36
	Triamcinolone	4	5	0	4	12 to 36
	Fludrocortisone	-	0	125	12	24 to 36
Long-Acting	Dexamethasone	0.75	25	0	17	36 to 54
	Betamethasone	0.6 to 0.75	25	0		36 to 54

Allergy Asthma Clin Immunol. 2013;9 (1):30.

Fact Checked Evidence Based What Are Steroid Half-Lives? What Is a Half-Life? The concept and idea of a half-life and half-lives is extremely important to the understanding of not just anabolic steroid use, but the use of any drugs, substances, and even foods that are consumed.

Steroid Half-Lives: The Ultimate Guide - Steroid Cycles

Weeks	Stanozolol	Nan D	Clomid
1	20mg/day	200mg/week	
2	30mg/day	200mg/week	
3	40mg/day	200mg/week	
4	50mg/day	400mg/week	
5	50mg/day	400mg/week	
6	40mg/day	200mg/week	
7	30mg/day		
8	20mg/day		
9			100mg/day
10			50mg/day
11			50mg/day
12			50mg/day
Total	200tabs	8ml	40tabs

The half life of testosterone cypionate is around 12 days. This means that 12 days from your last shot of 1000mg of testosterone cypionate (Time to start PCT ? You decide.), your blood levels of testosterone cypionate will contain 500mg of the steroid .

Testosterone Cycles for Beginners (Guide) - Steroid Cycles




Testosterone Cypionate is a steroid with a long half-life. 100 mg of testosterone is included in one milliliter. Depending on the individual, it will be given into the system over a period of 1-3 months. This is because it takes your body roughly two weeks to metabolize all of the testosterone in each milliliter.

Common Esters Available for Testosterone Injections - TransformYou

TESTOSTERONE INJECTIONS

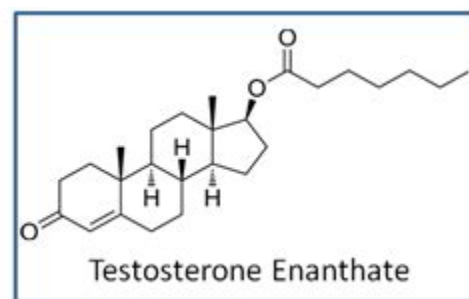
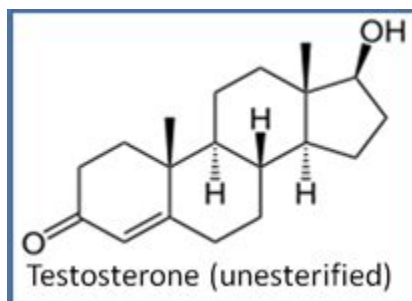
PROS	VS	CONS
Cost is cheaper compared to gel		Self injecting can be daunting or sometimes uncomfortable
Lower frequency of weekly or biweekly (as opposed to daily)		Some people might feel highs and lows in energy at different times in their shot cycle
Changes can be faster		Requires a bunch of supplies (all of which we send to you, though)



LOW DOSE: 0.1 ML WEEKLY
AVERAGE DOSE: 0.3ML WEEKLY
HIGH DOSE: 0.5ML WEEKLY

Nandrolone decanoate has a half-life of seven to 12 days, 7 relatively comparable to some of the testosterone esters. Empower Pharmacy offers compounded combination injections such as these, which are listed below. Providers who already work with Empower can talk to their account representative if they are interested in these or other combinations.

PDF Testosterone Types and Variants The Primary Testosterone Esters



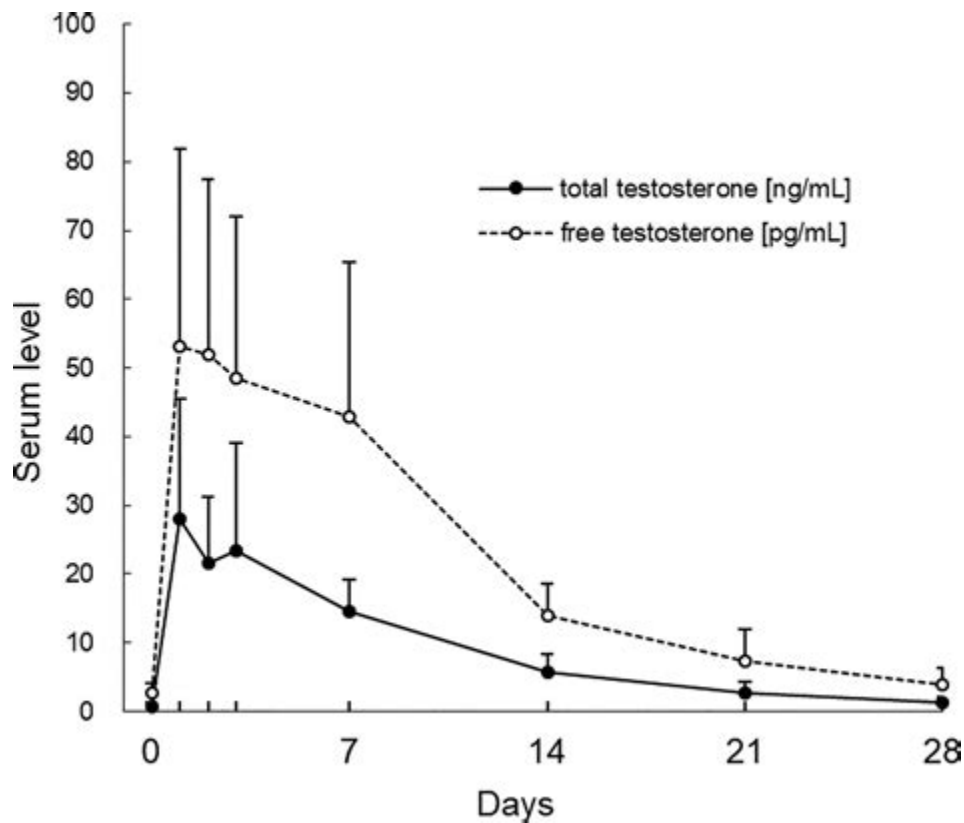
Intramuscular Testosterone esters injection: 125 mg followed by two injections each of 250 mg, 3 weeks apart. This should suffice to stimulate the hypothalamic-pituitary axis, particularly when puberty is imminent, i. e. when testicular volume is at least 4 mL at the time of treatment commencing.

Testosterone Esters: Learning Everything About Each One of Them



Pharmacokinetics of testosterone The pharmacology of testosterone, an androgen and anabolic steroid (AAS) medication and naturally occurring steroid hormone, concerns its pharmacodynamics, pharmacokinetics, and various routes of administration .

Pharmacokinetics of testosterone - Wikipedia



Testosterone propionate possesses a half-life of roughly 2-3 days. Therefore, testosterone propionate does not provide a sustained release. Due to this short half-life, it must be injected every third or fourth

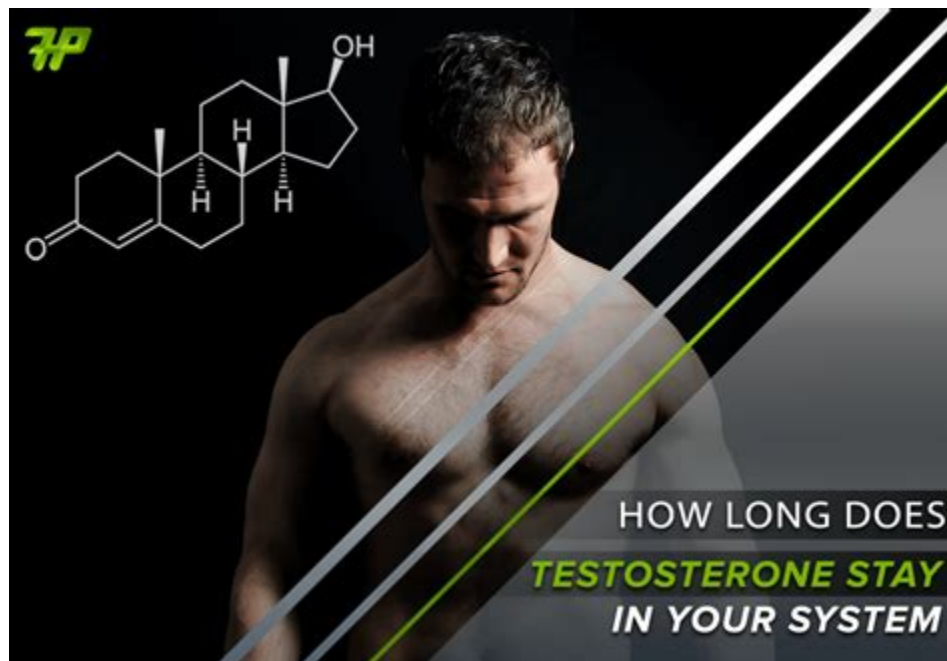
day. As a result, it isn't as commonly used for TRT. Testosterone Undecanoate Testosterone Undecanoate is available as brand name AVEED®.

Testosterone Ester Combinations | Empower Pharmacy



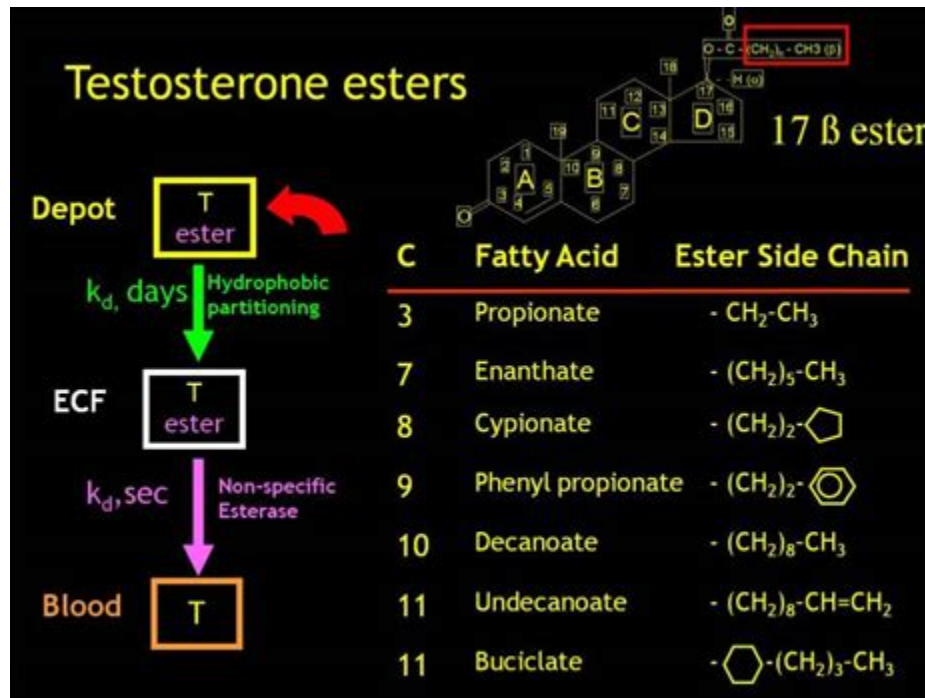
Testosterone Enanthate contains the carboxylic acid ester, enanthic acid. It has a half-life of approximately 7-9 days. According the British National Formulary, a single dose of 250mg Testosterone Enanthate should be injected every 2-3 weeks . According to the manufacturer, a single injection of 250mg leads to an increase in total plasma .

How Long Does Testosterone Stay In Your System?



Propionate has the shortest half-life of all the Testosterone esters. Testosterone Enanthate. This version of Testosterone is estimated to last about 22 days in the system before complete elimination due to its relatively long half-life, which takes about four days. Enanthate stays longer than propionate in the system, but it is eliminated from .

Testosterone Ester - an overview | ScienceDirect Topics



The IM and SC routes present a defined phase of absorption, in which the serum concentration of the drug administered progressively increases to a maximum (C max) and then decreases according to its elimination half-life. For testosterone esters, the time corresponding from administration to the C max, that is, time of maximum concentration (t .

- <https://groups.google.com/g/musclemaestros/c/J0afgxwU37I>
- <https://publiclab.org/notes/print/44426>
- <https://publiclab.org/notes/print/46636>