

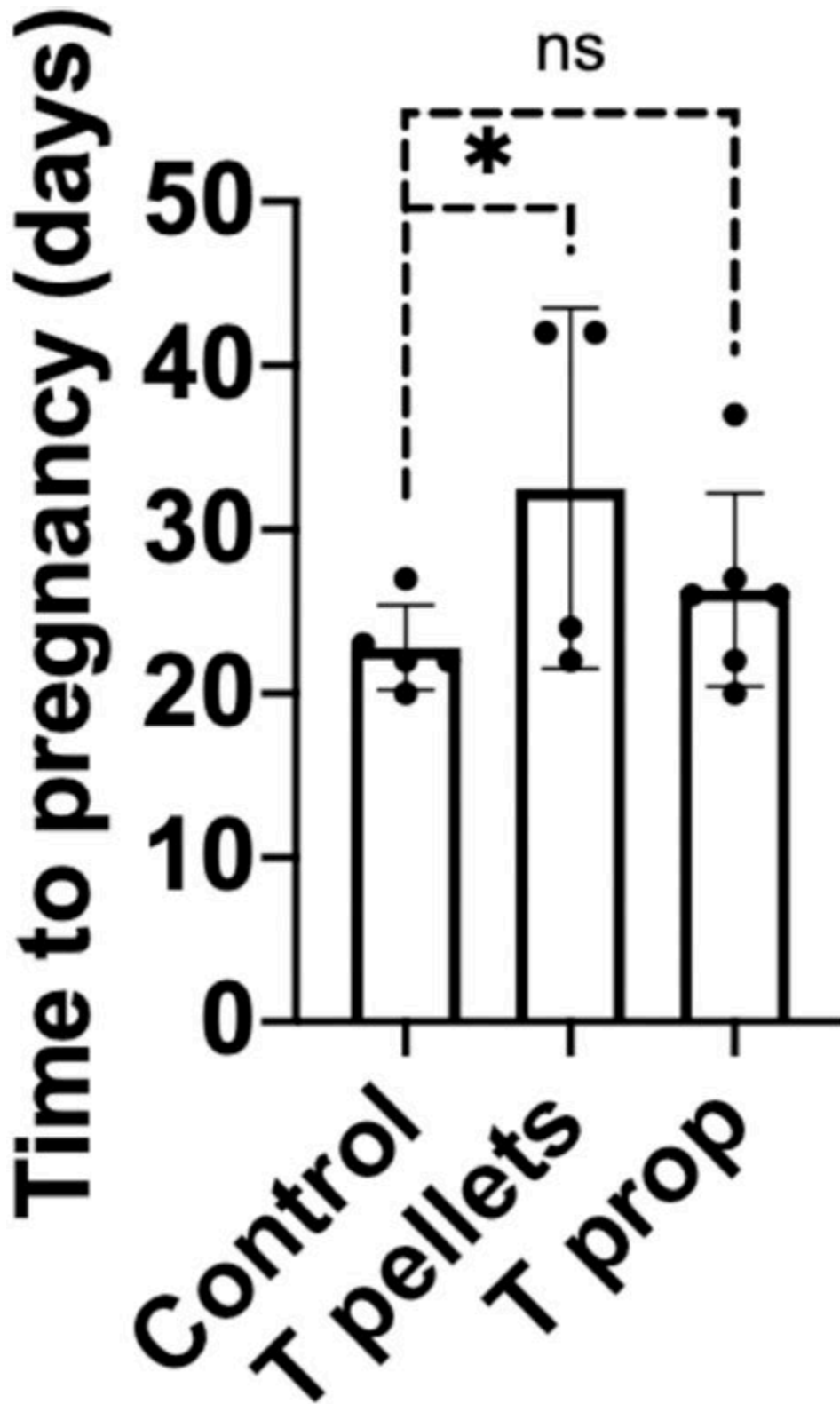


The half-life of testosterone suspension is 4.5 hours. This means that the hormone concentration in the body will be reduced by half every 4.5 hours. This makes it a very short-acting steroid with a quick onset of action. It is typically injected every day or every other day. Can Testosterone Suspension Be Detected in Drug Tests?



[👉👉👉 SHOP NOW ONLINE 👈👈👈](#)

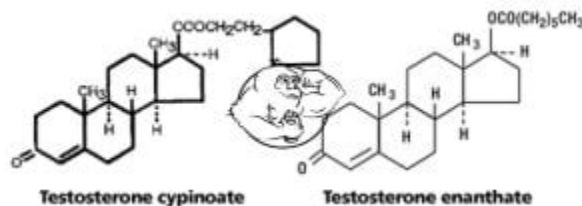
Short-acting testosterone appears to have lesser effect on male .



Unmodified testosterone has a half-life of 10 minutes; to overcome this limitation, testosterone is esterified and then dissolved in oil to allow for sustained release into the circulation after injection. These oily solutions contain a testosterone ester dissolved in vegetable oil (usually sesame seed, tea

seed, castor seed, or cottonseed oil .

## Testosterone esters - Evolutionary



Pharmacokinetics of testosterone The pharmacology of testosterone, an androgen and anabolic steroid (AAS) medication and naturally occurring steroid hormone, concerns its pharmacodynamics, pharmacokinetics, and various routes of administration .

## Testosterone Cycles for Beginners (Guide) - Steroid Cycles



For reference, testosterone enanthate has an elimination half-life of 4.5 days and a mean residence time of 8.5 days and requires frequent administration of approximately once per week. [19] Large fluctuations in testosterone levels result with it, with levels initially being elevated and supraphysiological. [19]

## Testosterone — What It Does And Doesn't Do - Harvard Health



Macho men? Aggressive, impatient, type A behavior? Road rage? Violence? Testosterone's role in bad behavior is largely a myth. What's more, testosterone plays other important roles in health and disease that may surprise you. For example, did you know that testosterone is a key player in prostate cancer? Or, that women need testosterone, too?

### What is the half life of Testosterone cream? - JustAnswer



Testosterone Undecanoate With a half life of 16.5 days, the undecanoate ester has the longest half life of all the testosterone esters. Hence, it can be injected once every 10-12 days and still keep even blood levels. Testosterone Cypionate and Enanthate These are the two of the most popular esters used in normal 10-12 week cycles. The reason .

## Testosterone cypionate - Wikipedia



The esterified forms of testosterone possess a half-life ranging from around less than 1 day for testosterone acetate, 1 day for propionate, 2.5 days for phenylpropionate, and up to 3.1 days for testosterone isocaproate. In this regard, the length of the ester can be correlated with the length of the carbon chain; thus, the longer the ester.

# Pharmacology of testosterone replacement therapy preparations

**TABLE 2**  
**FDA-approved testosterone formulations<sup>2</sup>**

Formulation	Trade names	Dosing, route, and administration	Benefits	Potential adverse effects or drawbacks
Testosterone cypionate, testosterone enanthate		75-100 mg IM every week or 150-200 mg IM every 2 weeks	Short-acting preparation that allows for drug withdrawal in the event of adverse effects	Fluctuation of testosterone levels
Testosterone undecanoate	Aveed	750 mg IM followed in 4 weeks by another 750 mg IM, then 750 mg every 10 weeks thereafter	Steady-state testosterone levels without fluctuation	Long-acting formulation; does not allow for rapid discontinuation of therapy if adverse effects develop
Transdermal and transmucosal testosterone	Androderm (patch)	A single, 2-6-mg patch daily	Most closely mirrors physiologic testosterone levels	May cause skin irritation; risk of transfer to partner or children
	Axiron (axillary)	30-120 mg daily		
	AndroGel, Testim, Vogelxo (gel)	50-100 mg daily applied to shoulders, arms, or abdomen		
	Fortesta (gel)	10-70 mg daily applied to thighs		
	Natesto (intranasal)	11 mg 3 times daily		
	Striant (buccal)	30 mg every 12 hours		
Oral testosterone	Androxy (fluoxymesterone)	5-20 mg daily in a single or divided doses	Daily oral dosing	Difficult to obtain normal physiologic levels; risk of hepatotoxicity
	Android, Methitest, Testred (methyltestosterone)	10-50 mg daily		
Subdermal testosterone pellets	Testopel	150-450 mg implanted subcutaneously every 3-6 months	Long duration of action	Infection at implantation site; explantation

IM, intramuscular.

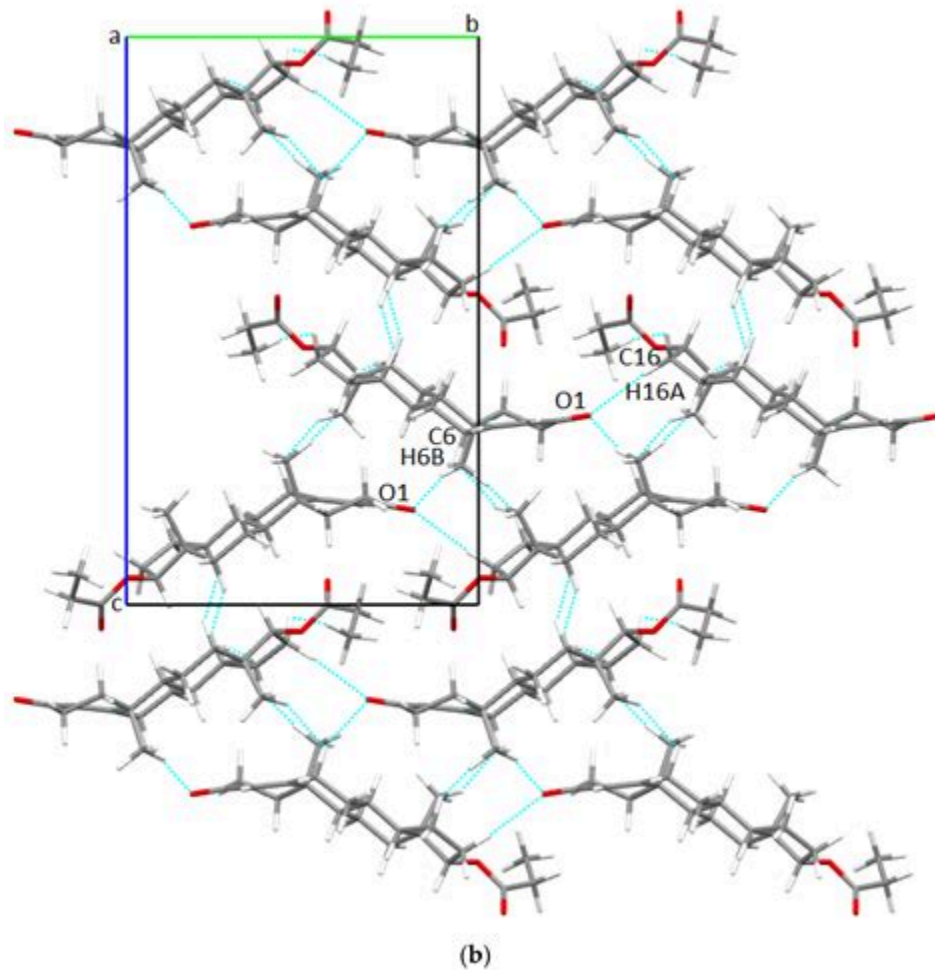
The terminal half-life of testosterone propionate is approximately 19 hours, and thus suggested injection intervals are every 2-3 days to achieve maintained therapeutic response. Subcutaneous testosterone pellets have a terminal half-life of approximately 70.8 days, with an apparent mean residence time of 87 days.

## Steroid Half-Lives: The Ultimate Guide - Steroid Cycles

Weeks	Stanozolol	Nan D	Clomid
1	20mg/day	200mg/week	
2	30mg/day	200mg/week	
3	40mg/day	200mg/week	
4	50mg/day	400mg/week	
5	50mg/day	400mg/week	
6	40mg/day	200mg/week	
7	30mg/day		
8	20mg/day		
9			100mg/day
10			50mg/day
11			50mg/day
12			50mg/day
<b>Total</b>	<b>200tabs</b>	<b>8ml</b>	<b>40tabs</b>

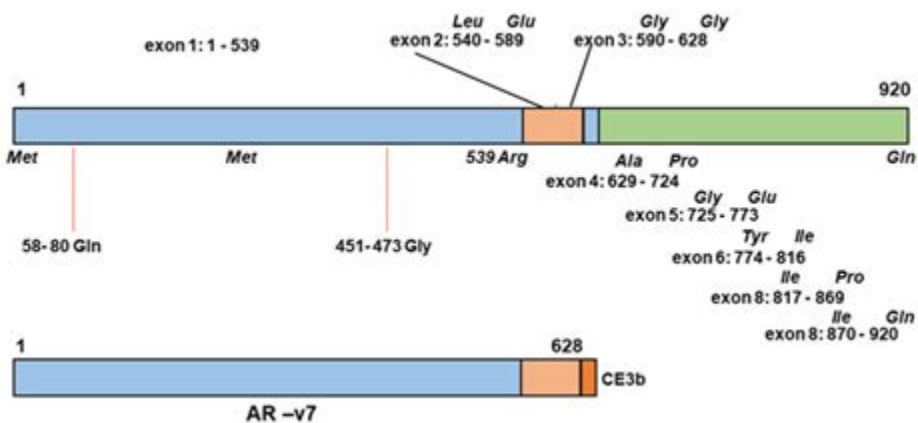
The half-life of cortisol is 60 to 100 minutes. The half-lives of aldosterone, DHEA, androstenedione, testosterone, and estradiol are less than 20 minutes. The half-life of aldosterone is less than 15 minutes. Unmetabolized cortisol accounts for about 0.1% of the total urinary cortisol metabolites.

## Structural Aspects and Intermolecular Energy for Some Short .



7 likes, 1 comments - anabolicdoc04 on December 2, 2022: "DISCLAIMER: the following information is purely for educational purposes and not the promotion of. "

## Androgen Replacement - StatPearls - NCBI Bookshelf



In males, the normal range for early morning testosterone is between 300 ng/dL to 1000 ng/dL but may vary from laboratory to laboratory. Clinicians must distinguish between primary (testicular) and secondary (pituitary-hypothalamic) hypogonadism.

## How Long Does AndroGel Stay In Your System? - MentalHealthDaily



Testosterone Enanthate: With a half-life of 4.5 to 5 days, enanthate provides a sustained release, making it suitable for less frequent injections. Testosterone Cypionate: Sharing a comparable half-life of 7 to 8 days, cypionate offers a balance between sustained release and reduced injection frequency.

## The Anabolic Doctor on Instagram: "DISCLAIMER: the following .



Testosterone is the primary male sex hormone and androgen in males. In humans, testosterone plays a key role in the development of male reproductive tissues such as testicles and prostate, as well as promoting secondary sexual characteristics such as increased muscle and bone mass, and the growth of body hair. It is associated with increased aggression, sex drive, the inclination to impress .

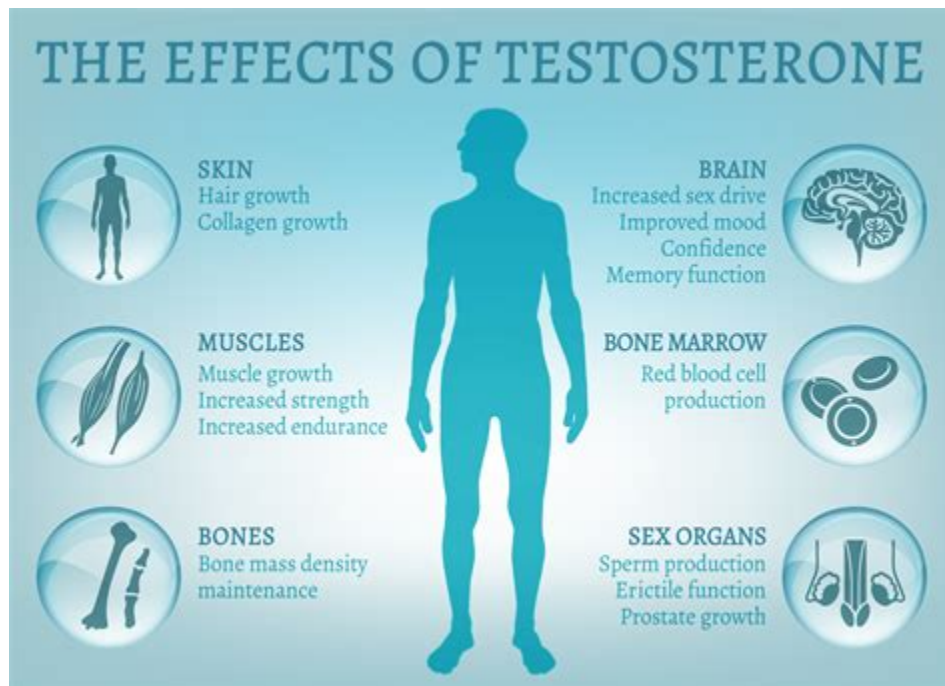


## Testosterone Suspension Half-Life | Lindy Health



Cypionate Dosage & Half Life Chart Author: Brian Hildebrandt, Last Updated: Jan 19, 2019  
Testosterone injections aren't generally discussed as a first line treatment when starting replacement therapy. There are many testosterone preparations on the market such as; gels (Androgel and Testim), creams, pills (Andriol), pellets and patches.

## Testosterone: What It Is, Function & Levels - Cleveland Clinic



Testosterone has different roles in different life stages, including: Fetal development. Puberty for male children. Adulthood. Testosterone and fetal development. . Testosterone is an essential part of

reproductive health and overall health for people assigned male at birth. It's natural for testosterone levels to vary depending on your age .

## Testosterone Injections: Cypionate Dosage & Half Life Chart



The half life is the point at which the drug in plasma is reduced by 50%. The half life of Depo-Testosterone is 8 days. Now "simple" logic would lead one to believe that at twice the ½ life (16 days) there would be ZERO (0%) of the injected testosterone in your plasma but that is NOT THE CASE as half life science is not

## Steroid Half-Lives - Understanding Dosing, Administration & Usage

	Glucocorticoid	Approximate Equivalent Dose (mg)	Relative Anti-inflammatory (Glucocorticoid) Potency	Relative Mineralocorticoid (Salt-Retaining) Potency	HPA Suppression	Half-Life (Hours)
Short-Acting	Cortisone	25	0.8	0.8	1	8 to 12
	Hydrocortisone	20	1	1		8 to 12
Intermediate-Acting	Methylprednisolone	4	5	0.5	4	12 to 36
	Prednisolone	5	4	0.8		12 to 36
	Prednisone	5	4	0.8	4	12 to 36
	Triamcinolone	4	5	0	4	12 to 36
	Fludrocortisone	-	0	125	12	24 to 36
Long-Acting	Dexamethasone	0.75	25	0	17	36 to 54
	Betamethasone	0.6 to 0.75	25	0		36 to 54

Allergy Asthma Clin Immunol. 2013;9 (1):30.

Approximately 2.4 million USA males aged 40-69 years old suffer from hypogonadism, and 2.3% of men in their 40s and 3.8% of men in their 60s were taking some form of TRT in 2011 (4, 5). Positive effects of TRT show considerable variation in terms of length of time to detection.

## Testosterone Sustanon's Half-Life: A Comprehensive Overview

An advertisement for legal injectable steroids. On the left, a muscular man in a grey tank top and blue pants is shown from the waist up, holding a thick black battle rope over his shoulder. The background is a vibrant blue and purple gradient. In the top right corner, there is a VISA MasterCard logo. The main text reads "Legal Injectable Steroids for sale". Below this, it says "Get the competitive advantage with our cutting-edge & legal roids!". A black box contains the text "Shop with confidence knowing that quality is our guarantee!". A list of benefits follows: "- Fast & Discreet shipping", "- Secure and Private payments", "- 100% delivery rate", and "- Tested and real roids". At the bottom right, there is a white button with the text "SHOP NOW!".

VISA MasterCard

# Legal Injectable Steroids for sale

Get the competitive advantage with our cutting-edge & legal roids!

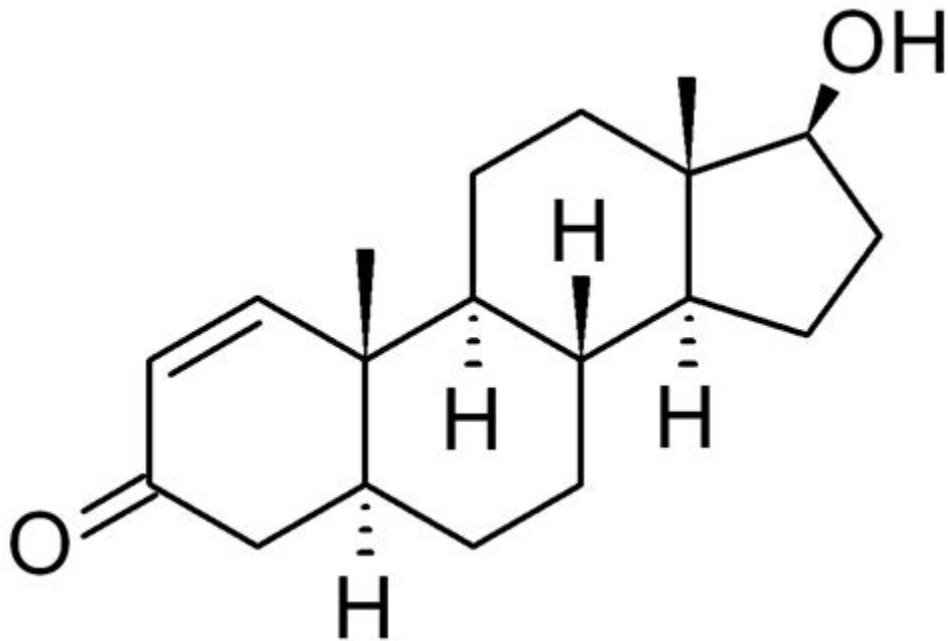
Shop with confidence knowing that quality is our guarantee!

- Fast & Discreet shipping
- Secure and Private payments
- 100% delivery rate
- Tested and real roids

SHOP NOW!

Evidence Based What Are Steroid Half-Lives? What Is a Half-Life? The concept and idea of a half-life and half-lives is extremely important to the understanding of not just anabolic steroid use, but the use of any drugs, substances, and even foods that are consumed.

## Testosterone - Wikipedia



However, on average, the half-life of Testosterone Sustanon is typically around 3 to 4 days. This means that it takes approximately 3 to 4 days for half of the administered dose of Testosterone Sustanon to be eliminated from the body.

## PDF Striking Down another Testosterone Myth: - Center 4 Mens Health



Medical experts stick by this one rule: "Different drugs have different half-lives; however, they all follow this rule: after one half-life has passed, 50% of the initial drug amount is removed from the body."  
"

## Testosterone Therapy With Subcutaneous Injections: A Safe, Practical .



Because the half life of topical compounded testosterone is 10-100 min. I would suggest applying the first dose in the morning and the second before bed typically at the pulse point on your forearm for maximum absorption. If you have further questions let me know. Once satisfied please leave a positive rating. Thanks.

## **Testosterone Half-Life | Uses, Dosage, Benefits, Side Effects And .**



**BIOTECH**  
PEPTIDES

# SERMORELIN IPAMORELIN

Store at -20C to 4C

**5/5MG**

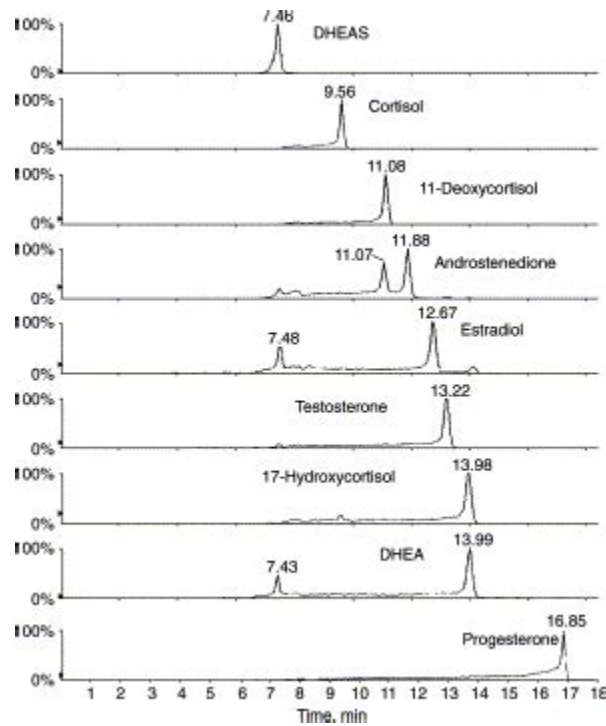


FOR RESEARCH ONLY



Starting approximately 3 weeks (testosterone undecanoate) or 6 weeks (testosterone enanthate) after initiating therapy or changing the dose, periodically monitor for and treat new-onset hypertension or exacerbations of preexisting hypertension and reevaluate whether the benefits of testosterone undecanoate or testosterone enanthate outweigh its .

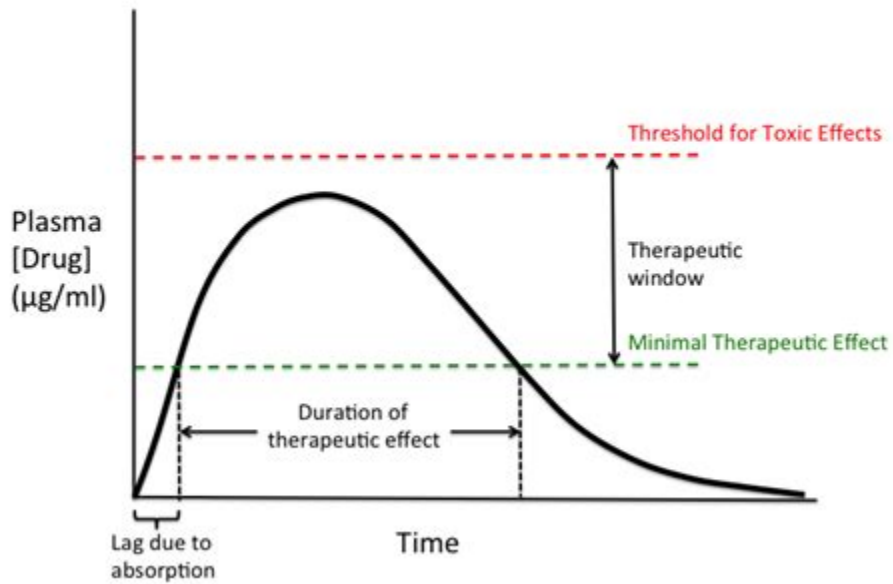
## Steroid hormones: relevance and measurement in the clinical laboratory



Last updated: Dec 9, 2023 SteroidCycle is intended for informational purposes only and does not take the place of professional medical advice. Testosterone is king when it comes to anabolic steroids. The majority of anabolic steroids you hear about are one form or another of testosterone, and usually synthetic derivatives of testosterone.

## Testosterone: Dosage, Mechanism/Onset of Action, Half-Life - Medicine

### Time Course of Drug Action (Oral)



The elimination half-life of AndroGel isn't fully elucidated, but is believed to fall within the range of 8.73 and 21.82 hours. This suggests that it'll take between 2 and 5 days to fully eliminate AndroGel from systemic circulation.

- <https://publiclab.org/notes/print/44903>
- <https://player.soundon.fm/p/e2ebf735-1b94-4bd7-bf66-4d09e4f5cac8>
- <https://groups.google.com/g/48muscleman36/c/eeu-0RpTfvo>