



Testosteron Enantat 300 Mg Ml Buy With Cryptocurrency #8kdT5Au



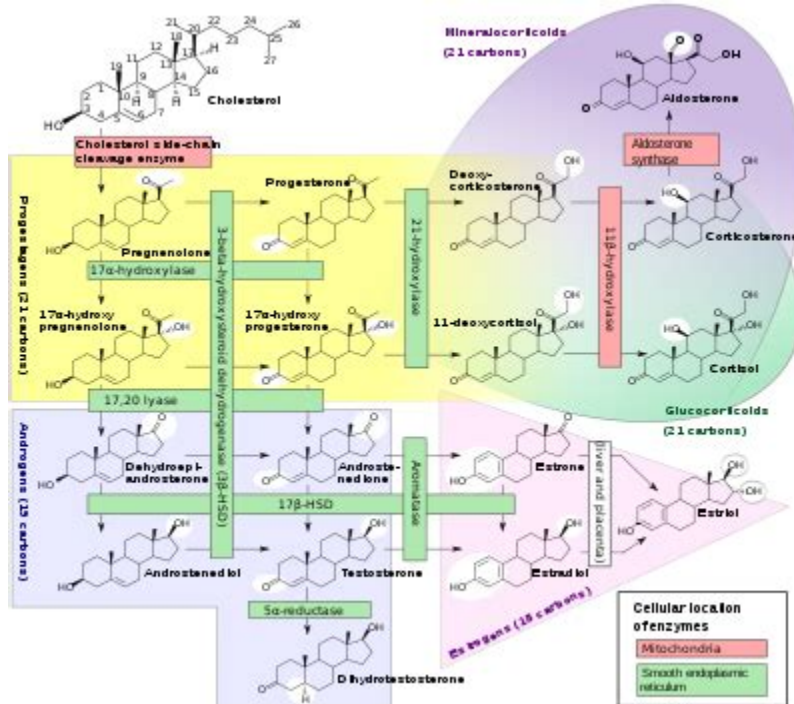
CHECK OUT OUR STORE: <https://bit.ly/3yF3zju>



Testosterone Enanthate 300mg / mL (Testosterone Enanthate) Testosterone enanthate: Enanthate is one of the most commonly used testosterone for the treatment of low testosterone. It is also extremely popular in performance enhancing circles. This is one of the most affordable anabolic steroids on the market, it's highly versatile, tolerated well by most all adult men [...] TESTOSTERONE ENANTHATE 300 MG/ML. Testosterone Enanthate 300mg is one of the best mass building anabolics known to man and is a highly recommended as the base of any mass building cycle. Testosterone is responsible for promoting health and well-being through enhanced libido, energy, immunity, increased fat loss, gaining and maintaining lean.



Testosterone Enanthate is a very simple anabolic steroid, but it's also one of the greatest anabolic steroids of all time. It is extremely powerful and carries a very high level of toleration among most adult men. As a therapeutic agent, the use of Testosterone Enanthate can radically transform your life.



Testosterone Enanthate is among the earliest steroids and is possibly the most often used of time.

Testosterone enanthate has a slow-acting discharge, in comparison to other kinds of testosterone. Bioniche Pharma - Enanta-Med is the best steroid for all levels of usage. Artificial Testosterone itself will probably be developed from the 1930s. [get more](#)

Ejemplo de TIPOS DE CICLOS

Ciclo básico de masa magra para intermedios :

Dianabol (Anabolex), Boldenona (Equipoise – Undecilinato de Boldenona), Polysteron (Sustanon), Nolvadex (Taxus, Tamoxifeno), Winstrol, HCG (Pregnyl) y Serophene (Clomid, Omifin, Clomifeno)

Ciclo básico de masa para principiantes :

Dianabol (Anabolex), Decadurabolin, Polysteron (Sustanon), Nolvadex (Taxus, Tamoxifeno), Winstrol, HCG (Pregnyl) y Serophene (Clomid)

For 200 mg/ml you would inject 1 full ml for a total of 200 grams test. Your test is 300/ml. Which 300mg/ml when you draw the oil into the syringe, you would only fill it up to the .7 line. The rest of the oil all 9.3 ml left stays in the vial. You would take your shots as you were prescribed. So 10 shots should technically use 7 ml. $.7 \times 10$.

Test 300 means that you get 300mg of test per ML or 1cc. I have only seen test come in 250mg doses per ml not 300. Most bottles are 10ml total. So for example a 10ml bottle of test 300 is 3,000mg of total test in the bottle. Enanthate refers to the ester. Enanthate is a longer ester so it will stay in your body longer so you don't have shoot.



Description. Testosterone enanthate 300mg, sold under the brand names Delatestryl and Xyosted among others, is an androgen and anabolic steroid (AAS) medication which is used mainly in the treatment of low testosterone levels in men. It is also used in hormone therapy for transgender men. It is given by injection into muscle or subcutaneously usually once every one to four weeks. Our Testosterone Mix product is a testosterone blend that contains four different testosterone esters. Mix 300 is designed to provide a fast yet extended release of testosterone. This product is manufactured by using technologies of high-percentage drug synthesis resulting in by 20% higher concentration of the active agent per ml as compared to the standard Sustanon® version.



Testosterone enanthate is a clear or yellowish fluid that comes in a 5-milliliter (ml) glass vial. It is injected into the buttocks muscles every one to four weeks. To avoid the changing hormone levels, and the mood swings that may come with them, lower doses are often used over shorter intervals. [click here for more](#)