



Print Save Raloxifene Generic name: raloxifene [ra-LOX-i-feen] Brand name: Evista Dosage form: oral tablet (60 mg) Drug classes: Hormones / antineoplastics, Selective estrogen receptor modulators Medically reviewed by Drugs on Mar 20, 2023. Written by Cerner Multum. Uses Side effects Warnings Before taking Dosage Interactions FAQ



🏆🏆🏆 VISIT OUR ONLINE STORE 🏆🏆🏆

Raloxifene For Men: Reversing Gyno & Even Potential Weight Loss



Dosage for raloxifene for gyno/ off cycle Anyone know the dosage protocol? Or rather taking tamoxifen off cycle for it? Open to any suggestions. . I seemed to have aggravated something from my natural test. production and need to get rid of it. Been off cycle for years now Anyone know Archived post.

Raloxifene Doses - Steroidal



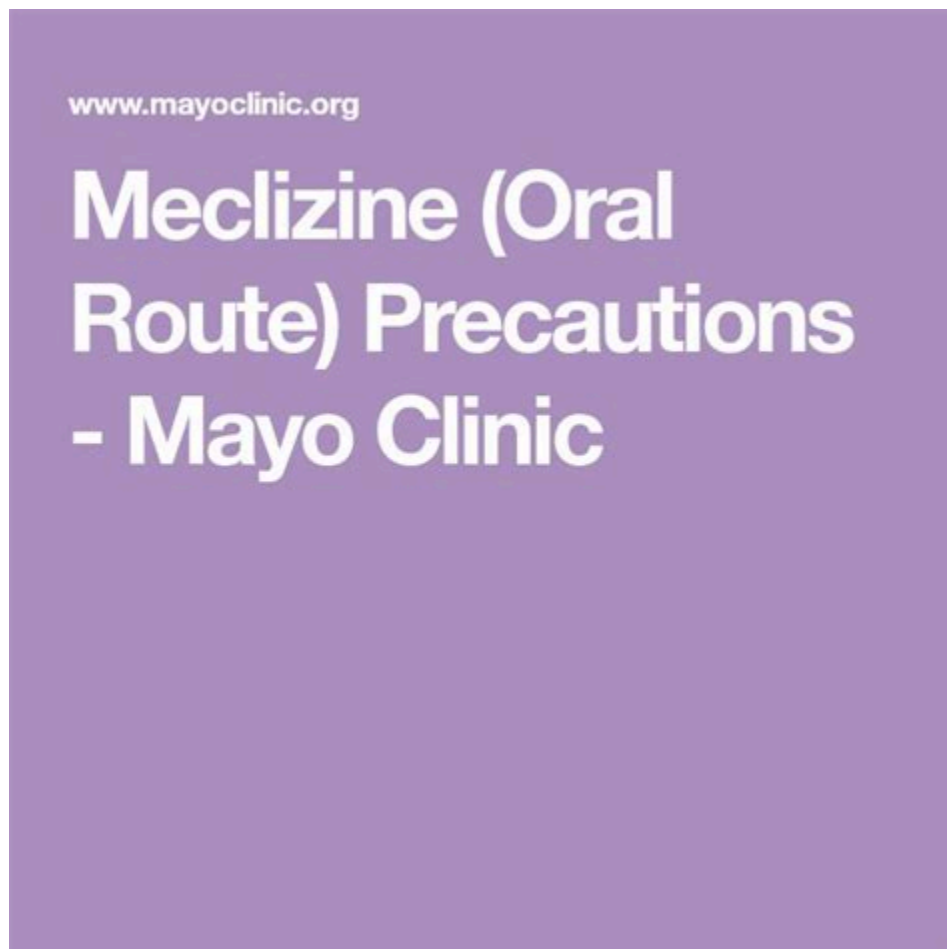
Also, the number of doses you take each day, the time allowed between doses, and the length of time you take the medicine depend on the medical problem for which you are using the medicine. For oral dosage form (tablets): For preventing bone loss: Adults—60 mg once a day, with or without meals. For treating bone loss:

Raloxifene Uses, Side Effects & Warnings - Drugs



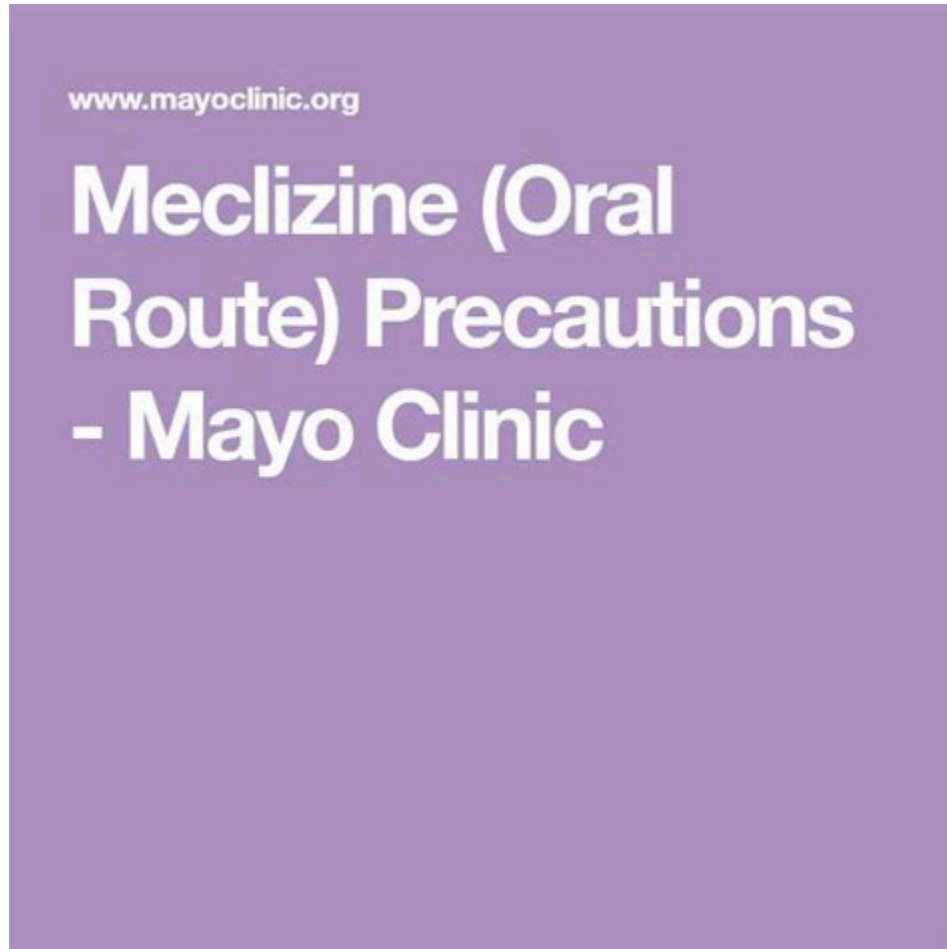
Uses. Raloxifene is used by women to prevent and treat bone loss (osteoporosis) after menopause. It slows down bone loss and helps to keep bones strong, making them less likely to break .

Raloxifene (Oral Route) Proper Use - Mayo Clinic



Feeling less "male" Lower sex drive and fertility Less ability to lift heavy weights Less endurance
Lower levels of stamina Worse post workout recovery Increase in mental and physical female traits
Potential for excess breast tissue to grow (gynecomastia)

Raloxifene (Oral Route) Proper Use - Mayo Clinic



#1 After failing with many OTC AI's I am going to take a stab at killing my pubertal Gyno with Ralox
What does the typical dosing protocol look like for this? ive seen a lot of different data on here ranging
from 60 mg dosage to 120 mg dosage some people report no sides while other report sides, also effects
on calcium absorption

Dosage for raloxifene for gyno/ off cycle : r/PEDs - Reddit



For men with idiopathic gynecomastia that causes discomfort and lasts more than three months, a short course (three to six months) of tamoxifen or raloxifene may be recommended. Prostate cancer patients — Gynecomastia is a common complication of hormonal treatment for prostate cancer (androgen deprivation therapy or antiandrogen monotherapy).

Treatment of gynaecomastia with raloxifene. | The BMJ



Merative, Micromedex Raloxifene is used to help prevent and treat thinning of the bones (osteoporosis) only in postmenopausal women. It works like an estrogen to stop the bone loss that can develop in women after menopause, but it does not increase the bone density as much as daily 0.625 mg doses of conjugated estrogens.

Raloxifene for Gyno: Best Protocol to Reverse Gynecomastia

Raloxifene For Gyno

Starting: 60 mg per day for 10 days total

Continue: 20 mg per day for a total of six months to a year

Pro Tip: Once daily dosing with Raloxifene is fine due to the long half-life of 27.7 hours!

[S]

The advertisement features a blue background. On the left is a white plastic bottle of Raloxifene capsules with a black cap. The label on the bottle reads 'Raloxifene', '60mg PER 1 CAPSULE', and '99% PURITY'. Several orange capsules are scattered in front of the bottle. To the right of the bottle, the text provides a clear starting and continuation protocol, along with a 'Pro Tip' about the drug's long half-life.

The recommended Raloxifene protocol for gyno reversal is 60mg daily for 10 days, then 20mg daily until gyno is reversed. During Raloxifene treatment, supplementation with Vitamin D (5000 IU daily) and Calcium (500 mg daily) is recommended. Gyno reversal with Raloxifene is not a quick process and requires patience.

Raloxifene For Gyno: Is It The Best SERM PCT For Stopping The Moobs .



Get Rid Of Gyno With Raloxifene Protocol: Raloxifene: 60mg daily for 10 days ONLY. Then 30mg daily until gynecomastia is reversed. Recommended Supplementation During Raloxifene Treatment: Vitamin D and Calcium are recommended during Raloxifene treatment. 5000 IU vitamin D daily, and 500 mg of Calcium daily. This protocol above will take time.

Ralox Gyno reversal protocol - AnabolicMinds

Raloxifene For Gyno

Starting: 60 mg per day for 10 days total

Continue: 20 mg per day for a total of six months to a year

Pro Tip: Once daily dosing with Raloxifene is fine due to the long half-life of 27.7 hours!

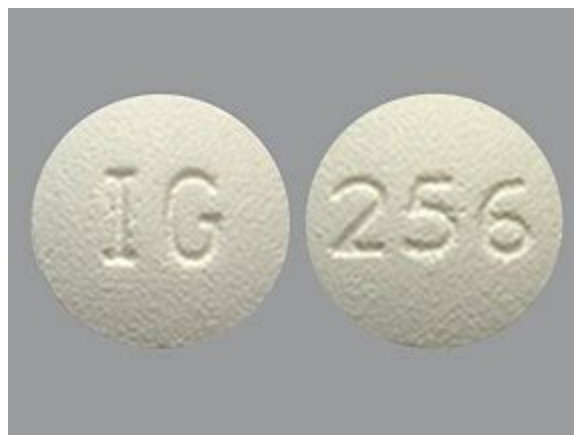
administered to 34 healthy males (mean age, 48 years) at the dose of 60 mg/day for one month; no subject developed gynecomastia. Besides, serum testosterone increased 20%, and serum estradiol decreased slightly. 7 We decided to evaluate the effect of raloxifene in a series of patients with gynecomastia.

Raloxifene for gyno?! - MESO-Rx Forum



I was eventually prescribed RALOXIFENE 90mg per day for 1 month, reducing down to 60mg for 2 months. (3 months treatment in total) It worked! The lump has completely gone which is a great relief as I was worried I would need surgery and there is no signs so far of rebound gyno.

Raloxifene Oral: Uses, Side Effects, Interactions, Pictures . - WebMD



For the purpose of gynecomastia prevention/reduction during a cycle: Raloxifene dosages are normally utilized for either the prevention of the development of gynecomastia during an anabolic steroid cycle that includes the use of aromatizable anabolic steroids, or as an interceptive medication shortly after the development of gynecomastia has begun.

Raloxifene to reduce existing gyno - AnabolicMinds



In a retrospective chart review of 38 patients in a pediatric endocrinology clinic, raloxifene (Evista; 60 mg once per day for three to nine months) reduced pubertal gynecomastia in 91 percent of .

Gyno obliterated by Raloxifene - success : r/Testosterone - Reddit



Raloxifene dosage for Gyno. Keep e2 controlled (not nuked) while trying to reduce it Use 100mg p5p daily also. Thanks bro! My e2 is quite high, I was taking arimidex to bring it down a little. I'd recommend trying to reduce the gyno on a cruise rather than pushing dosages.

Raloxifene dosage for Gyno : r/PEDs - Reddit



Raloxifene is a medication used to treat postmenopausal osteoporosis and the risk reduction of invasive breast cancer in post-menopausal women. Osteoporosis represents an increased risk for developing fractures. Raloxifene is a selective estrogen receptor modulator with an estrogen-agonistic effect on bone receptors. This activity outlines the indications, action, and contraindications of .

How To Get Rid Of Gyno Without Surgery - Raloxifene For Gyno



Learn more... I came across some information in another thread that has me optimistic about my gyno going into the future. It seems that Paxil, which I take at 15mg.

Management of adolescent gynecomastia: an update - PMC



60 mg orally per day Comments: For treatment or prevention of osteoporosis, advise patients to add supplemental calcium and/or vitamin D if daily intake is inadequate. When this drug is used to reduce the risk of invasive breast cancer, the optimum duration of treatment is not known.

Gynecomastia | AAFP



Supraphysiological • 2 yr. ago Raloxifene doesn't work on old gyno (+2 year old) from my experience. It is something like the cell structures age and harden to where ralox has no effect. Muffin_Minute • 2 yr. ago Worked for me, it is not a quick fix though. 1 month 120mg, 1 month 60mg, 4 months 30mg.

Raloxifene - StatPearls - NCBI Bookshelf



1 Sep 22, 2005 #2 well I think ralox and rxt would be perfect for after the cycle is over. . you didnt say did you stop the abombs? you are using 1g of test and i think adding in the drol is what did it. . . maybe get some dostinex for the progesterone issues from the tren. . i think the adex and dosti should be plenty on cycle! Haggerty New member

Final consensus on Raloxifene for Gyno reversal? - Reddit



Raloxifene For Gyno

Starting: 60 mg per day for 10 days total

Continue: 20 mg per day for a total of six months to a year

Pro Tip: Once daily dosing with Raloxifene is fine due to the long half-life of 27.7 hours!

[S]

The image shows a bottle of Raloxifene capsules with a label that reads 'Raloxifen 60mg PER 1 CAPSULE', '99% PURITY', and '60'. There are also several orange capsules shown next to the bottle.

Make sure your raloxifene dosage is around 60 mg for the first two weeks, and then taper it down to around half that over the next two weeks. Nolvadex is well tolerated and has been proven to shrink gyno as well. If the raloxifene isn't doing it on its own, then consider stacking it so that you can try and attack the breast tissue problem better.

Patient education: Gynecomastia (breast enlargement in men) - UpToDate



Plourde et al. (48) studied the effect of clomiphene citrate in 12 boys, aged 12 to 19 years, with persistent gynecomastia, at a dose of 50 mg/day by mouth for one to three months. The mean breast size decreased by 0% to 36%, with only five boys experiencing a reduction of greater than 20%.

- <https://gamma.app/public/Winstrol-100Mg-Injection-Price---Winvol-Stanozolol-Injection---Bu-x0fnqkyuv52c07y>
- <https://groups.google.com/g/vigor-vanguards/c/2BPyffwIfNo>
- <https://publiclab.org/notes/print/45127>