



Give the injection: Hold the syringe firmly like a dart. The IM injection angle should be 90 degrees to the injection site. Insert the needle with a brisk, controlled motion (do not "stab" the needle). Compress the plunger slowly to inject the drug. Quickly remove the needle without changing the angle.



👉👉👉 CHECK OUT OUR STORE 👈👈👈

Clenbuterol exerts antidiabetic activity through metabolic . - Nature



ARTICLE

Check for updates

<https://doi.org/10.1038/s41467-021-27540-w> OPEN

Clenbuterol exerts antidiabetic activity through metabolic reprogramming of skeletal muscle cells

Jaroslawnia Meister^{1,9}, Derek B. J. Bone^{1,9}, Jonas R. Knudsen², Luiz F. Barella¹, Thomas J. Velenosi³, Dmitry Akhmedov⁴, Regina J. Lee¹, Amanda H. Cohen¹, Oksana Gavrilova⁵, Yinghong Cui¹, Gerard Karsenty⁶, Min Chen⁷, Lee S. Weinstein⁷, Maximilian Kleinert^{2,8}, Rebecca Berdeaux⁴, Thomas E. Jensen², Erik A. Richter² & Jürgen Wess^{1,9}

Activation of the sympathetic nervous system causes pronounced metabolic changes that are mediated by multiple adrenergic receptor subtypes. Systemic treatment with β_2 -adrenergic receptor agonists results in multiple beneficial metabolic effects, including improved glucose homeostasis. To elucidate the underlying cellular and molecular mechanisms, we chronically treated wild-type mice and several newly developed mutant mouse strains with clenbuterol, a selective β_2 -adrenergic receptor agonist. Clenbuterol administration caused pronounced improvements in glucose homeostasis and prevented the metabolic deficits in mouse models of β -cell dysfunction and insulin resistance. Studies with skeletal muscle-specific mutant mice demonstrated that these metabolic improvements required activation of skeletal muscle β_2 -adrenergic receptors and the stimulatory G protein, G_s . Unbiased transcriptomic and metabolomic analyses showed that chronic β_2 -adrenergic receptor stimulation caused metabolic reprogramming of skeletal muscle characterized by enhanced glucose utilization. These findings strongly suggest that agents targeting skeletal muscle metabolism by modulating β_2 -adrenergic receptor-dependent signaling pathways may prove beneficial as antidiabetic drugs.

¹Molecular Signaling Section, Laboratory of Bioorganic Chemistry, National Institute of Diabetes and Digestive and Kidney Diseases, Bethesda, MD 20892, USA. ²Departments of Nutrition, Exercise and Sports, University of Copenhagen, København, Denmark. ³Faculty of Pharmaceutical Sciences, University of British Columbia, Vancouver, BC, Canada. ⁴Departments of Integrative Biology and Pharmacology, Houston Medical School, Houston, TX 77030, USA. ⁵Mouse Metabolism Core, National Institute of Diabetes and Digestive and Kidney Diseases, Bethesda, MD 20892, USA. ⁶Departments of Genetics and Development, Vagelos College of Physicians and Surgeons, Columbia University, New York, NY, USA. ⁷Metabolic Diseases Branch, National Institute of Diabetes and Digestive and Kidney Diseases, Bethesda, MD 20892, USA. ⁸Muscle Physiology and Metabolism Group, German Institute of Human Nutrition, Potsdam-Rehbrücke, Nuthetal, Germany. ⁹These authors contributed equally: Jaroslawnia Meister, Derek B. J. Bone. ✉email: meisterjaro@gmail.com; jurgew@mdsk.nih.gov

NATURE COMMUNICATIONS | (2022)13:22 | <https://doi.org/10.1038/s41467-021-27540-w> | www.nature.com/naturecommunications

Content courtesy of Springer Nature, terms of use apply. Rights reserved

Treatment Clenbuterol: Uses, Side Effects, Risks Banned Respiratory Treatment By Kristin Hayes, RN Updated on August 03, 2022 Medically reviewed by Farah Khan, MD Clenbuterol is a beta agonist. In some parts of the world, it is used to treat breathing difficulties caused by conditions such as asthma or chronic obstructive pulmonary disease (COPD).

Clenbuterol: Uses, Side Effects, Risks, and Legal Status - Verywell Fit



Clenbuterol injection sites. Clenbuterol Injection Sites: A Comprehensive Guide. Are you looking for the best way to administer Clenbuterol injections? Clenbuterol is a powerful steroid that can help you achieve your fitness goals, but it's important to know how to administer it properly for optimal results. In this guide, we'll go over the .

Best site injection areas for injectable steroids



I've noticed bruising and a little swelling around injection sites on myself and others around me that have used it. It goes away but be forewarned. I've used the clen dosing protocol and cycling. 2 weeks on/ 2 weeks off, or 2 days on/off. Treat it like clen as far as dosing goes. You will get a little more off from it due to the yohimbine.

Clenbuterol Cycle (Clen Cycle Guide) - Steroid Cycles

DAY	M	T	W	T	F	S	S	SUPPLEMENT	
WEEK	1	1cc			1cc			Winstrol	
	1	20mcg	20mcg	40mcg	40mcg	60mcg	60mcg	80mcg	Clenbuterol
									Cytomel
	2	1cc		1cc		1.5cc			Winstrol
	2	80mcg	80mcg	80mcg	80mcg	60mcg	40mcg	20mcg	Clenbuterol
									Cytomel
3	1.5cc		1.5cc		1.5cc			Winstrol	
3	off	off	off	off	off	off	off	Clenbuterol	
								Cytomel	
4	1.5cc		1.5cc		1.5cc			Winstrol	
4	off	off	off	off	off	off	off	Clenbuterol	
								Cytomel	
5	1.5cc		1cc		1cc			Winstrol	
5	20mcg	20mcg	40mcg	40mcg	60mcg	60mcg	80mcg	Clenbuterol	
								Cytomel	
6	1cc			1cc				Winstrol	
6	80mcg	80mcg	80mcg	80mcg	60mcg	40mcg	20mcg	Clenbuterol	
								Cytomel	

Pharmacology Indication Used as a bronchodilator in the treatment of asthma patients. Build, train, & validate predictive machine-learning models with structured datasets. See how Associated Conditions Contraindications & Blackbox Warnings Avoid life-threatening adverse drug events with our Clinical API Learn more

Clenbuterol: Uses, Side Effects, Risks - Verywell Health



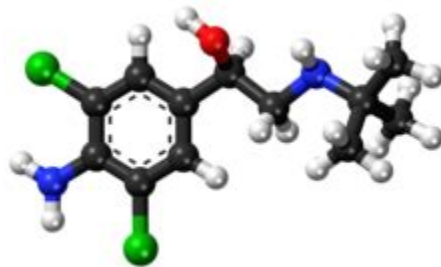
This is another site which is very popular, being that it is large and much easier to administer. The other reason why it's often used is that it's much simpler to deliver the injection, without the need to twist round uncomfortably. Because the thigh muscles are so big, it's possible to inject deep into the muscle using both hands.

Clenbuterol - Food and Agriculture Organization



It has approval in the United States for use in horses with breathing difficulty. Clenbuterol is both a decongestant and a bronchodilator. A decongestant works by narrowing and constricting blood.

Clenbuterol - Wikipedia



Clenbuterol is a sympathomimetic amine used by sufferers of breathing disorders as a decongestant and bronchodilator. People with chronic breathing disorders such as asthma use this as a bronchodilator to make breathing easier. It is most commonly available as the hydrochloride salt, clenbuterol hydrochloride. [2]

Clenbuterol: Uses, Interactions, Mechanism of Action - DrugBank Online



dustofblivion123. Report on my 2 week experience with Clenbuterol. It is, like some of the research I've read states, definitely a powerful fat loss agent. It doesn't work on cattle only, it works on humans too. I ended my bulk 2 weeks ago, on December 28th, 2014, at 220 lb and around 15% body fat. During those 2 weeks of cut that followed the .

Clenbuterol (Clen): An In-Depth Guide - Steroid Cycles



By: Juice Last updated: Oct 8, 2023 SteroidCycle is intended for informational purposes only and does not take the place of professional medical advice. Often considered more of a stimulant than a true steroid, Clenbuterol is notorious as a powerful fat burner that works by increasing thermogenesis which raises the metabolism.

Clenbuterol for Bodybuilding: Is it Safe? - WebMD



Clenbuterol is a beta2-agonist drug which acts as a bronchodilator and decongestant to assist with breathing in asthmatics and those with other breathing conditions. Only small doses are used in medical settings, starting at just 20mcg per day and rarely exceeding 40mcg. Clenbuterol Structure

How to Clean an Injection Site - Step by Step Guide



Based on intraperitoneal (i. p.) injections yielding significantly higher levels of clenbuterol in the CSF compared to subcutaneous injections (Supplementary Fig. 1), i. p. administration was selected. To mirror previous studies 37, we administered a single injection (i. p.) of 10, 20, or 40 mg/kg clenbuterol or vehicle (saline), Snca mRNA and α -syn protein were assessed in the SN, and α -syn .

Clenbuterol | C₁₂H₁₈Cl₂N₂O | CID 2783 - PubChem



Oral vs injectable Clenbuterol - Injectable Clenbuterol, or 'Helios', is a combination of clenbuterol and yohimbine hydrochloride. It is a potent fat burner and weight loss agent.

Clenbuterol exerts antidiabetic activity through metabolic .



ARTICLE

Check for updates

<https://doi.org/10.1038/s41467-021-27540-w> OPEN

Clenbuterol exerts antidiabetic activity through metabolic reprogramming of skeletal muscle cells

Jaroslawnia Meister^{1,9}, Derek B. J. Bone^{1,9}, Jonas R. Knudsen², Luiz F. Barella¹, Thomas J. Velenosi³, Dmitry Akhmedov⁴, Regina J. Lee¹, Amanda H. Cohen¹, Oksana Gavrilova⁵, Yinghong Cui¹, Gerard Karsenty⁶, Min Chen⁷, Lee S. Weinstein⁷, Maximilian Kleinert^{2,8}, Rebecca Berdeaux⁴, Thomas E. Jensen², Erik A. Richter² & Jürgen Wess^{1,9}

Activation of the sympathetic nervous system causes pronounced metabolic changes that are mediated by multiple adrenergic receptor subtypes. Systemic treatment with β_2 -adrenergic receptor agonists results in multiple beneficial metabolic effects, including improved glucose homeostasis. To elucidate the underlying cellular and molecular mechanisms, we chronically treated wild-type mice and several newly developed mutant mouse strains with clenbuterol, a selective β_2 -adrenergic receptor agonist. Clenbuterol administration caused pronounced improvements in glucose homeostasis and prevented the metabolic deficits in mouse models of β -cell dysfunction and insulin resistance. Studies with skeletal muscle-specific mutant mice demonstrated that these metabolic improvements required activation of skeletal muscle β_2 -adrenergic receptors and the stimulatory G protein, G_s . Unbiased transcriptomic and metabolomic analyses showed that chronic β_2 -adrenergic receptor stimulation caused metabolic reprogramming of skeletal muscle characterized by enhanced glucose utilization. These findings strongly suggest that agents targeting skeletal muscle metabolism by modulating β_2 -adrenergic receptor-dependent signaling pathways may prove beneficial as antidiabetic drugs.

¹Molecular Signaling Section, Laboratory of Bioorganic Chemistry, National Institute of Diabetes and Digestive and Kidney Diseases, Bethesda, MD 20892, USA. ²Departments of Nutrition, Exercise and Sports, University of Copenhagen, København, Denmark. ³Faculty of Pharmaceutical Sciences, University of British Columbia, Vancouver, BC, Canada. ⁴Departments of Integrative Biology and Pharmacology, Houston Medical School, Houston, TX 77030, USA. ⁵Mouse Metabolism Core, National Institute of Diabetes and Digestive and Kidney Diseases, Bethesda, MD 20892, USA. ⁶Departments of Genetics and Development, Vagelos College of Physicians and Surgeons, Columbia University, New York, NY, USA. ⁷Metabolic Diseases Branch, National Institute of Diabetes and Digestive and Kidney Diseases, Bethesda, MD 20892, USA. ⁸Muscle Physiology and Metabolism Group, German Institute of Human Nutrition, Potsdam-Rehbrücke, Nuthetal, Germany. ⁹These authors contributed equally: Jaroslawnia Meister, Derek B. J. Bone. [✉]email: meisterjaro@gmail.com; jurgew@mdk.nih.gov

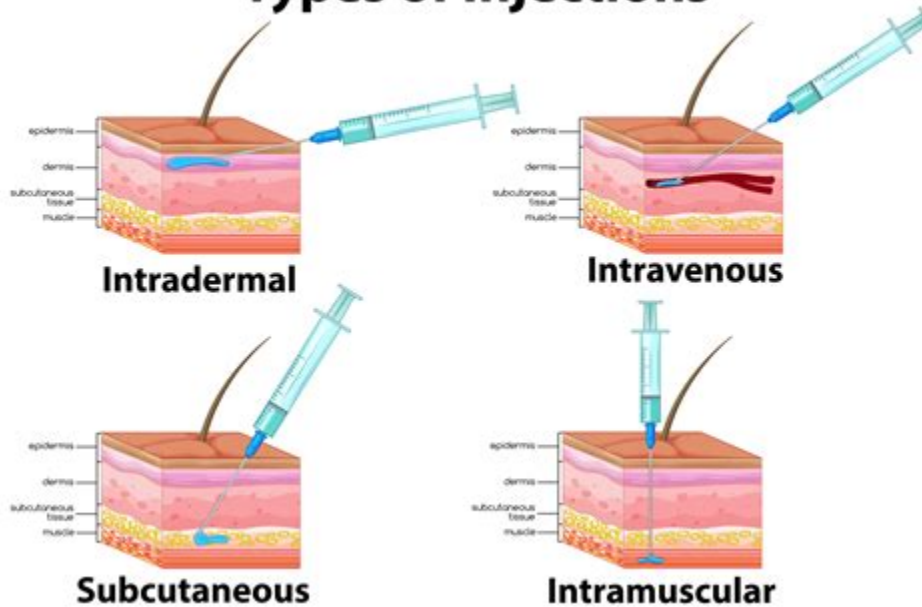
NATURE COMMUNICATIONS | (2022)13:22 | <https://doi.org/10.1038/s41467-021-27540-w> | www.nature.com/naturecommunications

Content courtesy of Springer Nature, terms of use apply. Rights reserved

Adah Chung --photo-- / Getty Images Table of Contents What Is Clenbuterol? What Does Clenbuterol Do? Risks and Side Effects Current Research Frequently Asked Questions Clenbuterol, also called "clen," is considered a performance-enhancing drug. It's banned from most athletic competitions.

Injection Types & Sites: What you need to know - Drugs

Types of Injections



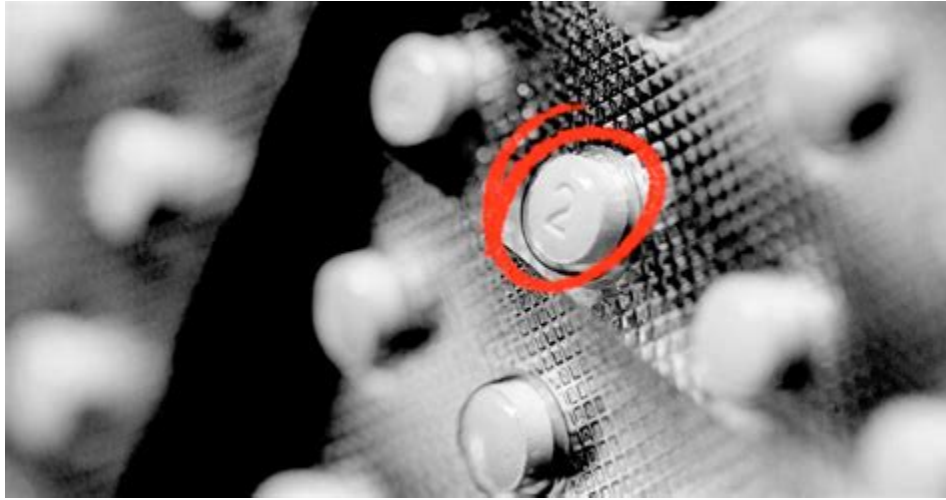
Study 7, GLP-certified, confirms this using a total of 9 lactating dairy cows which received the recommended single injection of clenbuterol hydrochloride, as intended for the tocolytic preparation. By 6 days, total residues in liver were less than 1 m g/kg, in muscle less than 0. 1 m g/kg, and in samples of injection site were less than 0. 5 m g/kg.

The Best Intramuscular (IM) Injection Sites - Verywell Health



Description. Clenbuterol is a substituted aniline that is 2,6-dichloroaniline in which the hydrogen at position 4 has been replaced by a 2- (tert-butylamino)-1-hydroxyethyl group. It has a role as a bronchodilator agent, a beta-adrenergic agonist and a sympathomimetic agent. It is a member of ethanolamines, a primary arylamine, a secondary .

Clenbuterol: Uses, side effects, and risks - Medical News Today



Rotate your injection sites - the best spot is not always the same spot. If you are receiving SC and IM injections regularly it's recommended to rotate the site of your injections. Injecting in the same spot each time can cause the skin in that area to become lumpy or sunken. It helps to have a plan and keep a record of your injection sites.

Oral vs Injectable Clenbuterol (Helios) | Clenbuterol Steroids



Prepping the skin with a saturated 60% to 70% alcohol swab for 30 seconds is the standard approach that is also recommended by World Health Organisation (WHO). It is advised that you use firm circular motions to apply the alcohol.

Clenbuterol intravenous, clenbuterol injection sites - IBP Zamboanga .



Medical Answers How and where do you inject Enbrel (etanercept)? Medically reviewed by Carmen Pope, BPharm. Last updated on May 26, 2023. Official answer by Drugs Enbrel may be injected into the top of your thigh, your stomach (excluding your belly button area), or your upper arm (if somebody else

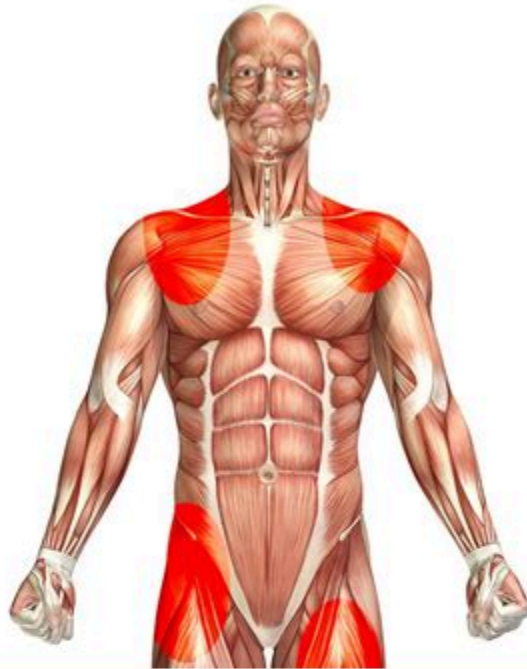
is administering it).

Report on my 2 week experience with Clenbuterol. : r/Fitness - Reddit

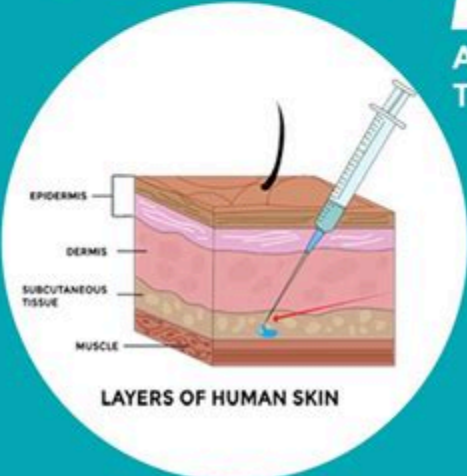


When control and clenbuterol-treated mice were injected with an i. p. glucose bolus, the clenbuterol group showed lower blood glucose levels (215 ± 15 vs. 272 ± 14 mg/dl) and a significantly greater increase in SKM levels of glucose and pyruvate (Fig. 3c) and sugars such as fructose and mannose (Fig. 3d) 30 min after glucose injection, in .

Clenject injection sites - Steroid




**BEST INJECTION
SITES FOR 'TRT'
AND
TESTOSTERONE INJECTIONS**



EPIDERMIS
DERMIS
SUBCUTANEOUS TISSUE
MUSCLE

LAYERS OF HUMAN SKIN



ED Medical
Real Answers for Real Problems

The complex block features a teal background. At the top, the text 'BEST INJECTION SITES FOR 'TRT' AND TESTOSTERONE INJECTIONS' is written in white, bold, sans-serif font. Below this is a circular inset containing a diagram of a skin cross-section. A syringe is shown injecting a blue liquid into the subcutaneous tissue layer. Labels on the left side of the diagram identify the layers: EPIDERMIS, DERMIS, SUBCUTANEOUS TISSUE, and MUSCLE. Below the diagram is the text 'LAYERS OF HUMAN SKIN'. To the right of the diagram is the ED Medical logo, which consists of a blue cross with a white human figure inside, and the text 'ED Medical' in bold black font with the tagline 'Real Answers for Real Problems' underneath.

Pain Management Guide What You Need to Know About Clenbuterol for Bodybuilding Medically Reviewed by C. Nicole Swiner, MD on July 07, 2023 Written by WebMD Editorial Contributors What Is.

How and where do you inject Enbrel (etanercept)? - Drugs



When control and clenbuterol-treated mice were injected with an i. p. glucose bolus, the clenbuterol group showed lower blood glucose levels (215 ± 15 vs. 272 ± 14 mg/dl) and a significantly .

- <https://publiclab.org/notes/print/49455>
- <https://drive.google.com/file/d/1eviOXkRHd9mQNJRHrWg5pAWr61jL717T/view>
- <https://groups.google.com/g/noyuqzj/c/k7iwH-PnVng>