

In men, doctors prescribe hCG to help address the symptoms of hypogonadism, such as low testosterone and infertility. hCG can help the body increase its production of testosterone and sperm,.

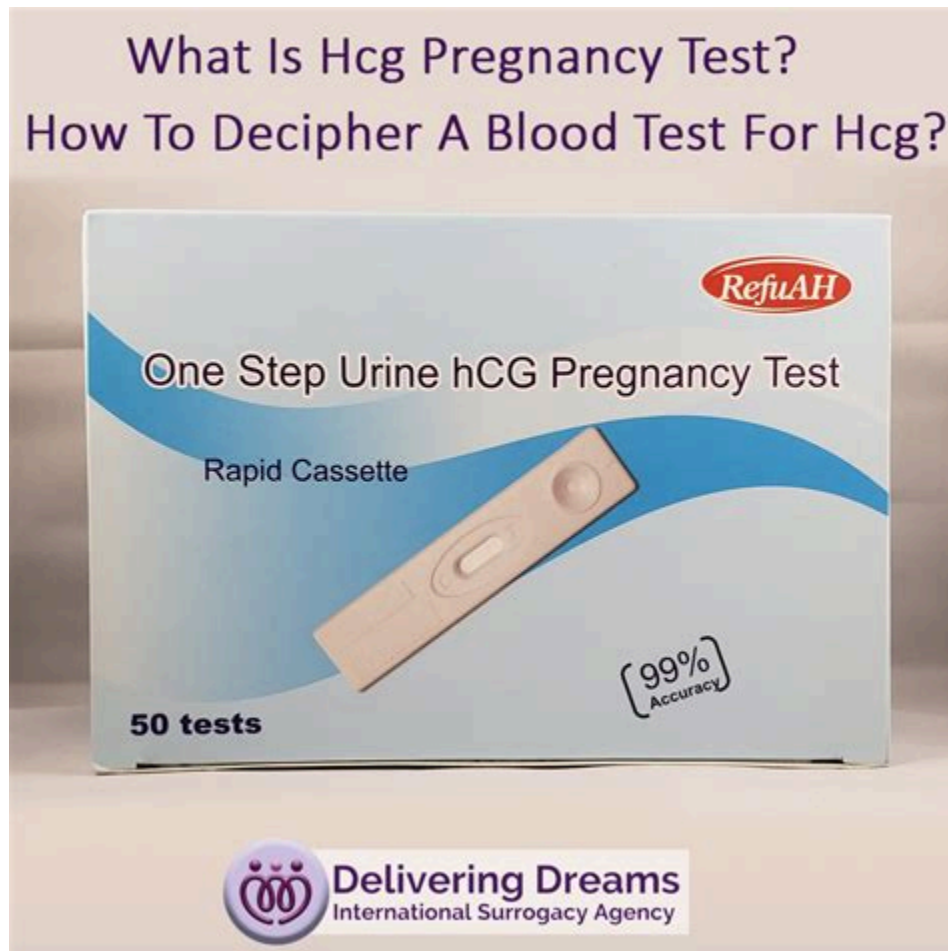
BUY ANABOLICS ONLINE

100% SECURE

WORLDWIDE SHIPPING

👉👉👉 GO TO OUR ONLINE STORE 👉👉👉

How Much HCG Do You Take On Cycle? | Anabolic Steroid Forums



hCG levels in our blood change during the first trimester, rising rapidly. Nonpregnant women have less than 5 milli-international units per milliliter (mIU/mL). "A normal blood level for hCG on the day a period is due (14 days after ovulation) is 40 to 120 mIU/mL," Dr. Matthews says. Levels should then double every 48 hours from weeks four .

Trenbolone Cycle: The Ultimate Guide - Inside Bodybuilding



Long term HCG doses will normally fall in the 4,000iu range and are given 3 times per week for 6=9 months. This will normally be followed by 3 more months of therapy at a dose of 2,000 3 times per week. Then we have the anabolic steroid user, specifically the steroid user using HCG while on cycle.

On cycle HCG use, how much do you use? | Professional Muscle .



The general price is between £25 - £35 per box. HCG for PCT Human Chorionic Gonadotropin has been a staple as a part of a PCT for many, many years. It has solidified its place in the bodybuilding world by being one of the most effective treatments to boost natural testosterone production in men.

Post Cycle Therapy (PCT): The Ultimate Guide - Steroid Cycles



Chart: $5,000 \div 10 = 500$ IUs per ml. Result: 500 IUs is the the strength of the HCG per ml. You are now ready to calculate how much you will draw up into your syringe to get your desired dose. The next step is to determine the dosage provided to you by your physician. The prescribed dosages are usually: 175, 200, 150, or 125 daily.

HCG on cycle dosage help. | Anabolic Steroid Forums

Cycle 1	Mon	Tues	Wed	Thurs	Fri	Sat	Sun
week 1	10mg/db	10mg	10mg	10mg	10mg	10mg	10mg
week 2	20mg	20mg	20mg	20mg	20mg	20mg	20mg
week 3	30mg	30mg	30mg	30mg	30mg	30mg	30mg
week 4	30mg	30mg	30mg	30mg	30mg	30mg	30mg
week 5	20mg	20mg	20mg	20mg	20mg	20mg	20mg
week 6	10mg/db	10mg	10mg	10mg	10mg	10mg	10mg

For the purpose of on cycle use, standard male HCG doses will normally be 250-350iu every 4-5 days throughout the duration of the cycle. This will keep the testicles full throughout the cycle and may promote an easier recovery in the end. If your HCG doses are higher than the listed range, you will risk creating a Luteinizing Hormone (LH) .

HCG For Post Cycle Therapy: Unleashing The Potential



HCG is a hormone made by the placenta during pregnancy. hCG can be measured using blood or urine tests. At-home pregnancy tests detect hCG in your urine. 800. 223. 2273; 100 Years of Cleveland Clinic; MyChart; . It's not the number that matters as much as how the number changes. Your healthcare provider will let you know if your hCG levels .

HCG Levels in Pregnancy & hCG Levels Chart by Week | Pampers

Pregnancy week	Standard hCG range
3 weeks	5–50 mIU/mL
4 weeks	5–426 mIU/mL
5 weeks	18–7,340 mIU/mL
6 weeks	1,080–56,500 mIU/mL
7–8 weeks	7,650–229,000 mIU/ml
9–12 weeks	25,700–288,000 mIU/r
13–16 weeks	13,300–254,000 mIU/r
17–24 weeks	4,060–165,400 mIU/mL
25–40 weeks	3,640–117,000 mIU/mL

The first way is to use a smaller amount throughout the cycle (or throughout TRT) to maintain testicular function on a steady basis. Usually 250 iu per week is the common dose if using HCG during a cycle or during TRT. If using HCG during cycle then a "blast" of HCG is not necessary when coming off cycle or during TRT at any time.

HCG 101: Real Talk on Hypogonadism & Human Chorionic Gonadotropin



#1 Hate to sound like a newbie, but I have only ever done HCG at the end of cycle for PCT. This time around, I plan to run it during cycle. Got me some Zy HCG, seems legit but will use a prego test just to

Table of Contents HCG (human chorionic gonadotropin) Description: History: Structural Characteristics: How Supplied: Administration (General): Administration (Men): Post-Cycle: On-Cycle: Administration (Women): Availability: RICH PIANA SETH FEROCCE Lastly what Ill be running for 2. 5 weeks is as follows. UPDATE 3/6/19 Products HCG Supplies

HCG - steroid



HCG (2000 IU administered every other day for 20 days) Nolvadex (2 x 20mg for 45 days) Clomid (2 x 50mg for 30 days) Trenbolone and Testosterone Benefits. We see the muscle and strength gains on this cycle being exceptional, with minimal water retention, making it a very aesthetic bulking cycle.

Beta hCG doubling time calculator and charts - Flo

constant until the end of pregnancy (4).

hCG Level	Doubling Time Expected
Below 1,200 mlU/ml	48–72 hours
1,200 – 6,000 mlU/ml	72–96 hours
Above 6,000 mlU/ml	Over 96 hours

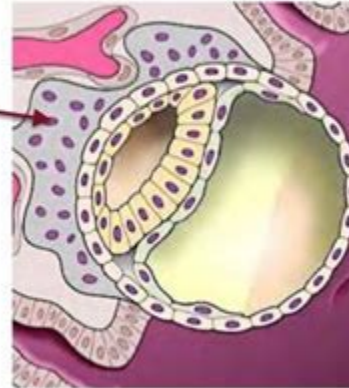


More on early hCG levels

14. Oct 4, 2016. #11. Panic said: I just want to gather some info on how much HCG if any that people take during their cycle. I take 500iu every 3 days but I've read that it could be effective at far less, like 500IU per week or 100 per day.

Human Chorionic Gonadotropin

- Glycoprotein produced during pregnancy by **syncytiotrophoblast** cells and by the pituitary in menopause women
- In early pregnancy, hCG rescues the corpus luteum and maintains progesterone production until placental steroidogenesis is established



In contrast, a heavier or stacked cycle, or a much longer cycle, the extra strength of Clomid might be required to get you back to regular hormone function and mitigate the more severe drop in natural testosterone and rise in estrogen. . Aromasin is considered the most effective option for combining with HCG in post-cycle therapy, with the .

What is HCG? | PCT Cycle | Dose | Sides TMuscle



HCG Dosage. HCG dosage will vary from person to person depending on their needs. For the typical

TRT treatment, you might go for 2000 - 3000 IU per week. If you are running Testosterone as a TRT and simply want to avoid infertility, you might opt for 2000 IU per week. If you are a bodybuilder coming off cycle, you might need 5000 - 10 000 .

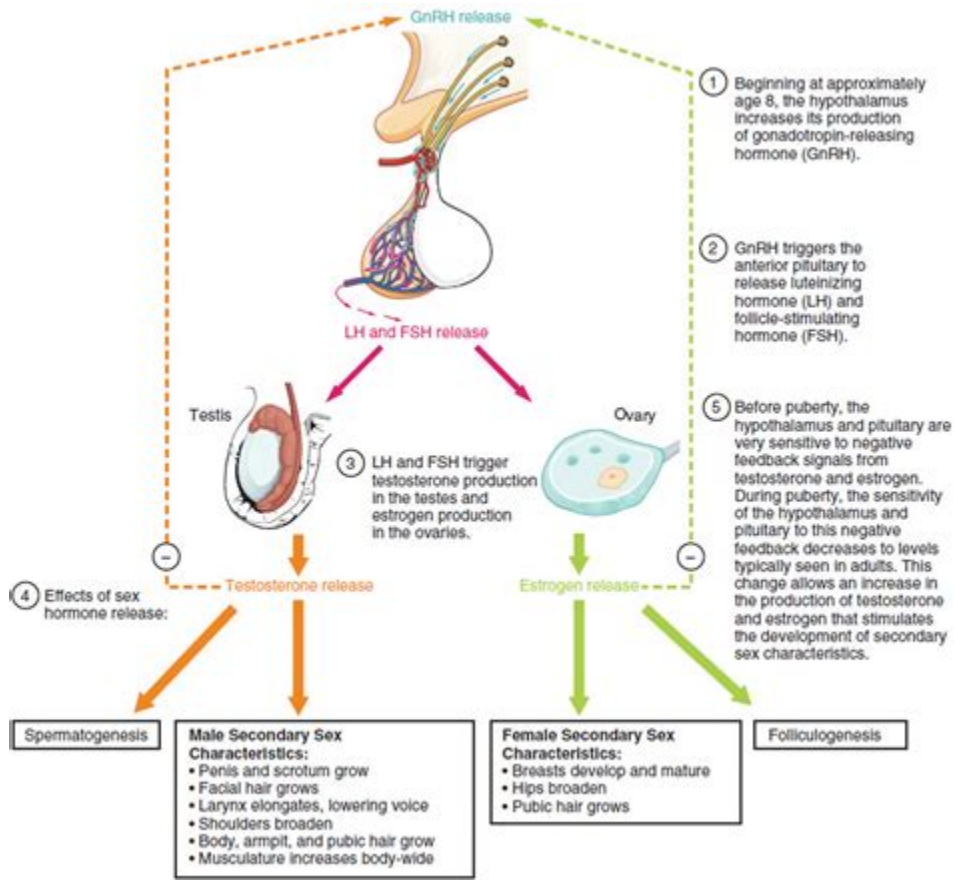
HCG Calculator & Chart: Formula to Calculate Your HCG Dosage

HCG Levels Chart in Pregnancy	
Weeks from Last Menstrual Period	Amount of hCG in mIU/mL
3	5 - 50
4	5 - 426
5	18 - 7,340
6	1,080 - 56,500
7-8	7,650 - 229,000
9 - 12	25,700 - 288,000
13 - 16	13,300 - 254,000
17 - 24	4,060 - 165,400
25 - 40	3,640 - 117,000
Non-Pregnant	55 - 200

prem 

#1 I've used HCG on cycle and post cycle and as my age crept on, on cycle just made PCT go much smoother. I used to go 500/wk but I'm running low and going to try 300/wk during my current cycle. How much HCG do you run on cycle and how do you use it? After or during your cycles? F fisher69 Well-known member Registered

Indications for the use of human chorionic gonadotropic hormone for the .



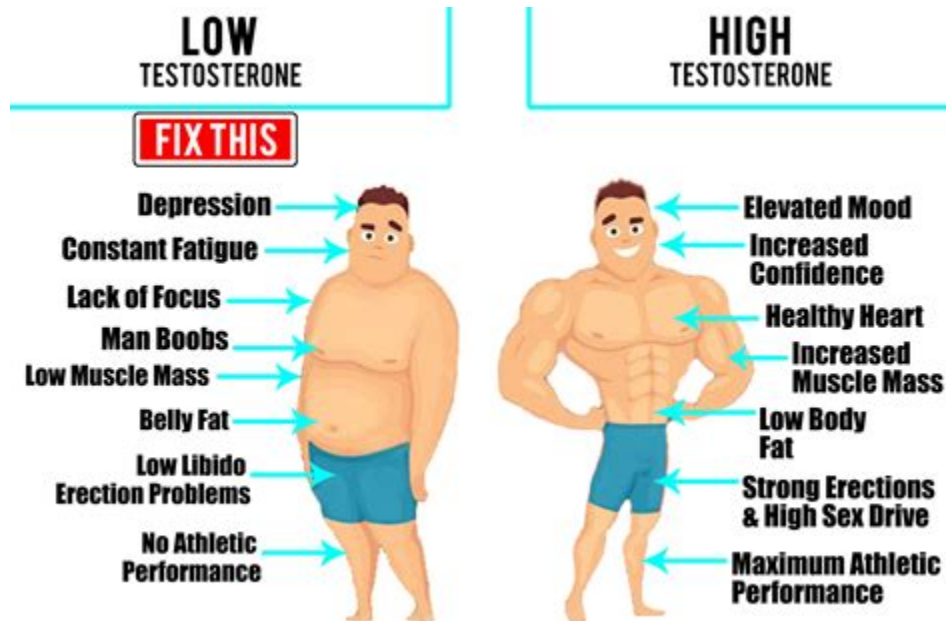
The typical hCG level around four weeks of pregnancy is around 140 mIU/ml 5, so a high hCG level can be generally considered to mean you are pregnant. However, there are some very rare medical conditions that can cause high hCG levels.

HCG - HOW AND WHY TO USE THIS COMPOUND - Secrets of Bodybuilding



This covers two different methods - the recommended on cycle low dose of hCG (250iu/e4d), or the option of using HCG only for the last few weeks of the cycle (2500iu/week); but this is only if you didn't use any hCG in the cycle itself. When doing the method of hCG on cycle you must stop using it about two weeks before steroids are cleared .

hCG for Men: Testosterone, Weight Loss, Side Effects & More - Healthline



Human Chorionic Gonadotropin (HCG): 5000 to 10,000 units IM once 1 day following the last dose of menotropins Recombinant Chorionic Gonadotropin (r-HCG): 250 mcg subcutaneously once 1 day following last dose of follicle-stimulating agent Comments: Some experts recommended HCG doses of 10,000 units.

How to Run HCG during a steroid cycle and post cycle dosages

Week	Test E	Dbol	Hcg	Arimidex	Nolvadex	Clomid
1	800mg	40mg	500iu	0.25mg		
2	500mg	40mg	500iu	0.5mg		
3	500mg	40mg	500iu	0.5mg		
4	500mg	40mg	500iu	0.5mg		
5	500mg		500iu	0.25mg		
6	500mg		500iu	0.25mg		
7	500mg		500iu	0.25mg		
8	500mg		500iu	0.25mg		
9	500mg	40mg	500iu	0.5mg		
10	500mg	40mg	500iu	0.5mg		
11		40mg	500iu	0.5mg		
12		40mg	500iu	0.5mg		
13			500iu			
14					40mg	
15					40mg	50mg
16					20mg	50mg
17					20mg	50mg
18						50mg
19						

Medical prescription HCG doses recommend 500 - 1,000IU of HCG are to be administered 3 times weekly for a 3 week period, after which HCG doses are reduced to the same amount only twice weekly. For long-term therapy, a higher dose of 4,000IU administered 3 times per week is recommended for a 6 -

9 month period.

Steroid Cycle Length: The Complete Guide - Steroid Cycles

Weeks	Stanozolol	Nan D	Clomid
1	20mg/day	200mg/week	
2	30mg/day	200mg/week	
3	40mg/day	200mg/week	
4	50mg/day	400mg/week	
5	50mg/day	400mg/week	
6	40mg/day	200mg/week	
7	30mg/day		
8	20mg/day		
9			100mg/day
10			50mg/day
11			50mg/day
12			50mg/day
Total	200tabs	8ml	40tabs

When planning for pregnancy in greater than 12 months TRT should be cycled off every six months replaced by a four-week cycle of 3,000 IU of hCG every other day. For men who do not desire to preserve fertility testicular size can be maintained while undergoing TRT with 1,500 IU of HCG given weekly.

HCG For Bodybuilding - Dosage, Cycle, Side Effects - Muscle and Brawn



If you're thinking about using hcg doses for post cycle therapy (PCT), there are some general guidelines to follow. Typically, a pct hcg dosage of 500-1000 IU three times a week is recommended. This is how much hcg on cycle you should consider. It's an appropriate hcg for pct dosage, specifically this hcg dosage for pct.

HCG Dosage - Steroidal

Cycle 1	Mon	Tues	Wed	Thurs	Fri	Sat	Sun
week 1	10mg/db	10mg	10mg	10mg	10mg	10mg	10mg
week 2	20mg	20mg	20mg	20mg	20mg	20mg	20mg
week 3	30mg	30mg	30mg	30mg	30mg	30mg	30mg
week 4	30mg	30mg	30mg	30mg	30mg	30mg	30mg
week 5	20mg	20mg	20mg	20mg	20mg	20mg	20mg
week 6	10mg/db	10mg	10mg	10mg	10mg	10mg	10mg

Pregnancy blood tests can detect hCG hormone levels as low as 5 to 10 mIU/mL. Urine tests. At-home urine tests require higher levels of hCG to detect a pregnancy, typically at least 20 mIU/mL. If your home pregnancy test is positive, your healthcare provider may offer a blood test to check your hCG levels.

- <https://publiclab.org/notes/print/41907>
- <https://www.colcampus.com/courses/94501/pages/zomacton-price-uk>
- <https://publiclab.org/notes/print/43127>