

Nolvadex is a brand name of tamoxifen, a hormonal therapy used to treat and prevent breast cancer. It is available only with a prescription and has serious side effects, such as uterine malignancies, stroke, and pulmonary embolism. Learn about its uses, dosage, warnings, interactions, and more.



🍊🍊🍊 BUY ANABOLICS ONLINE 🍊🍊🍊

Tamoxifen: Uses, Side Effects, Dosage & Reviews - GoodRx



Tamoxifen is a medication used to treat breast cancer and lower the chance of getting it in other breasts.

It is also used for other purposes. Learn how to take it, its side effects, interactions, and warnings from this web page.

Tamoxifen Uses, Dosage, Side Effects - Drugs



Nolvadex is a medication that blocks the growth of breast cancer and reduces the chances of recurrence. Learn how to use it, what precautions to take, and what side effects to watch out for. This web page does not provide information on how to get Nolvadex.

Tamoxifen: Uses, Side Effects & Risks - Cleveland Clinic



Eli Lilly and Co (LLY. N) just launched Zepbound, another GLP-1, for weight loss. Pharma industry rivals, including Pfizer Inc (PFE. N) and AstraZeneca Plc (AZN. L), are also seeking to enter the .

Nolvadex Dosage Guide - Drugs



Tamoxifen (Nolvadex) prevents and treats breast cancer. It prevents cancer cells from growing and spreading in your breast tissue by blocking estrogen. . Get rid of any unused medication after the expiration date. To get rid of medications that are no longer needed or have expired: Take the medication to a medication take-back program. Check .

Nolvadex (Tamoxifen Citrate): Uses, Dosage, Side Effects . - RxList



Medication guide NOLVADEX® (Nole-vah-dex) Tablets Generic name: tamoxifen (ta-MOX-I-fen)
Written for women who use NOLVADEX to lower their high chance of getting breast cancer or who have ductal carcinoma in situ (DCIS)

NOLVADEX(Tamoxifen Citrate)TABLETS - DailyMed



Nolvadex is a brand name of tamoxifen tablets, a hormonal therapy for breast cancer. It may cause serious side effects like stroke, blood clots, or endometrial or uterine cancer. It is used to treat or prevent breast cancer in women with a higher risk of getting it. Learn how to take it, what precautions to follow, and what interactions to avoid.

Nolvadex: Indications, Side Effects, Warnings - Drugs



Nolvadex is a hormonal therapy for breast cancer that can be taken as a tablet or an injection. The recommended daily dose is 20-40 mg for patients with breast cancer, depending on the type and stage of the disease. The dose may be adjusted to 20 mg per day for 5 years or more. Learn more about the dosage, side effects, interactions and alternatives of Nolvadex.

Tamoxifen Uses, Side Effects, and Medicine Facts - Breastcancer



Nolvadex is a medicine that competitively inhibits estrogen receptors in the target organs and tumors, and can be used to treat and prevent breast cancer in women and men. Learn how to buy Nolvadex online, its benefits, side effects, and dosages from this web page.

Nolvadex Advanced Patient Information - Drugs



Arimidex is a prescription medication for certain forms of breast cancer that are hormone-receptor positive or negative. It belongs to a group of drugs called aromatase inhibitors that lower estrogen levels

in the body. You can get it from your doctor or a pharmacy, and it has side effects and precautions. Learn more about Arimidex's dosage, cost, uses, and alternatives.



Tamoxifen for Breast Cancer: Uses & Side Effects - Cleveland Clinic

TAMOXIFEN

- Selective estrogen receptor
- It acts as anti-estrogens in breast tissue and partial agonist in some organs.
- Dose: 20 mg/day for 5 years.
- Beneficial effects on lipid metabolism and bone.

↓

TREATMENT OF HORMONO-DEPENDENT BREAST CANCER



Store at room temperature between 20 and 25 degrees C (68 and 77 degrees F). Protect from light. Get rid of any unused medication after the expiration date. To get rid of medications that are no longer needed or have expired: Take the medication to a medication take-back program. Check with your pharmacy or law enforcement to find a location.

Arimidex: Side Effects, Alternatives, Dosage, Cost, and More - Healthline



Nolvadex is a nonsteroidal antiestrogen used to treat breast cancer that has spread to other parts of the body, after surgery and radiation therapy, or in high-risk patients. It is available as tablets in 10 mg or 20 mg doses. Learn about its indications, dosage, side effects, interactions, warnings, and more.

Nolvadex Prices, Coupons & Savings Tips - GoodRx



Nolvadex is a medicine for breast cancer treatment and infertility treatment that blocks oestrogen receptors. Learn how to take Nolvadex, its dosage, side effects, interactions, precautions and more.

Tamoxifen for Breast Cancer Treatment | Susan G. Komen®



Taxomifenworld is an online store that sells generic Nolvadex / Tamoxifen 10mg, a medication for breast cancer prevention and treatment. You can order it with free express shipping on orders over \$300 and get discounts on other products.

Weight-loss drugs: Who, and what, are they good for? | Reuters



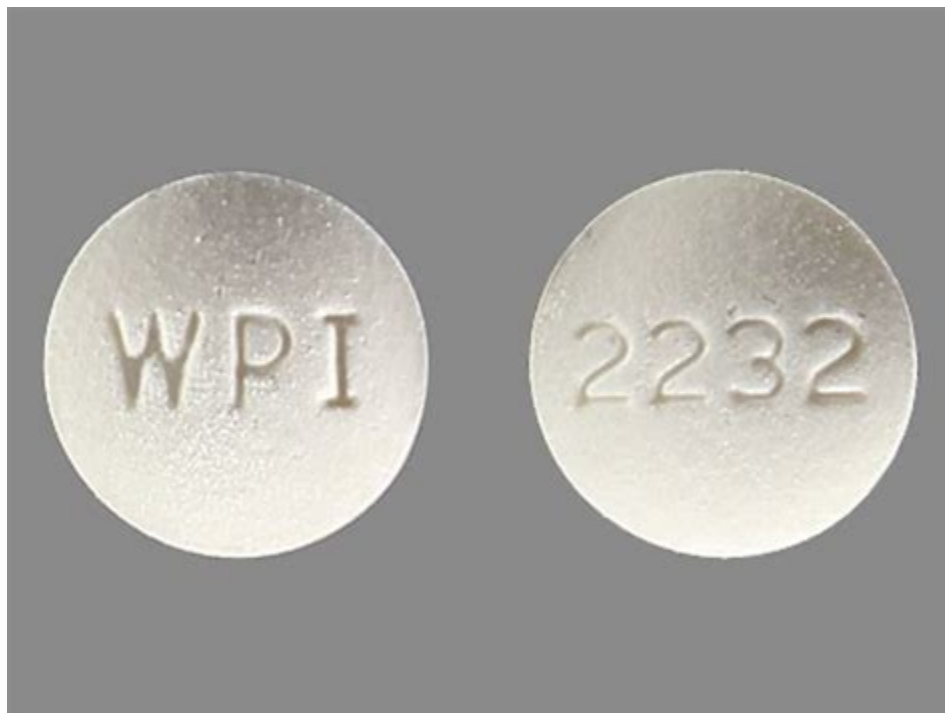
Welcome to our Nolvadex page, where you can learn about this medication used to treat and prevent breast cancer. We offer comprehensive information on Nolvadex, including its mechanism of action, potential side effects, and dosages. Take charge of your health and explore how Nolvadex can help you fight cancer.

Nolvadex



Tamoxifen is an oral medication used to treat and prevent breast cancer in men and women. It works by blocking estrogen from stimulating the growth of hormone receptor-positive (HR+) breast cancer cells. It can be taken as a tablet or a liquid, and it has serious side effects such as blood clots, uterine cancer, and cataracts. Learn how to get it with GoodRx coupons and reviews.

Nolvadex - Side Effects, Interactions, Uses, Dosage, Warnings



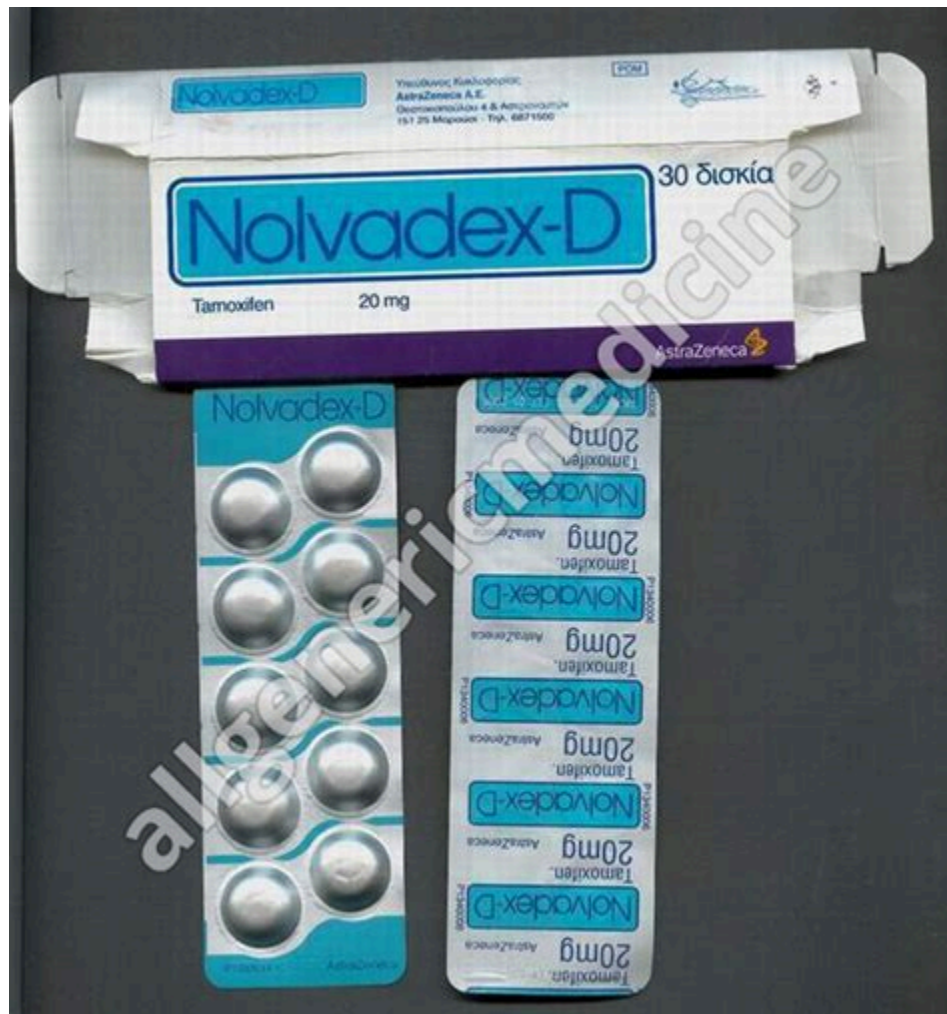
Learn how to use Nolvadex, a popular post cycle therapy (PCT) method, after a steroid cycle. Find out the benefits, dosage, legality, and alternatives of Nolvadex PCT for beginners. Compare Nolvadex with Clomid and other PCT methods for SARMs and prohormones.

Post Cycle Therapy: The Best PCT Guide For Beginners (2023)



ENDING SOON: 21% Off July 4th Sale - Use Code: USA21. ENDING SOON: 21% Off w/Code: USA21 Menu

Generic Nolvadex / Tamoxifen online



high blood calcium --confusion, tiredness, nausea, vomiting, loss of appetite, constipation, increased thirst or urination, weight loss. Common side effects may include: vaginal bleeding or .

Nolvadex



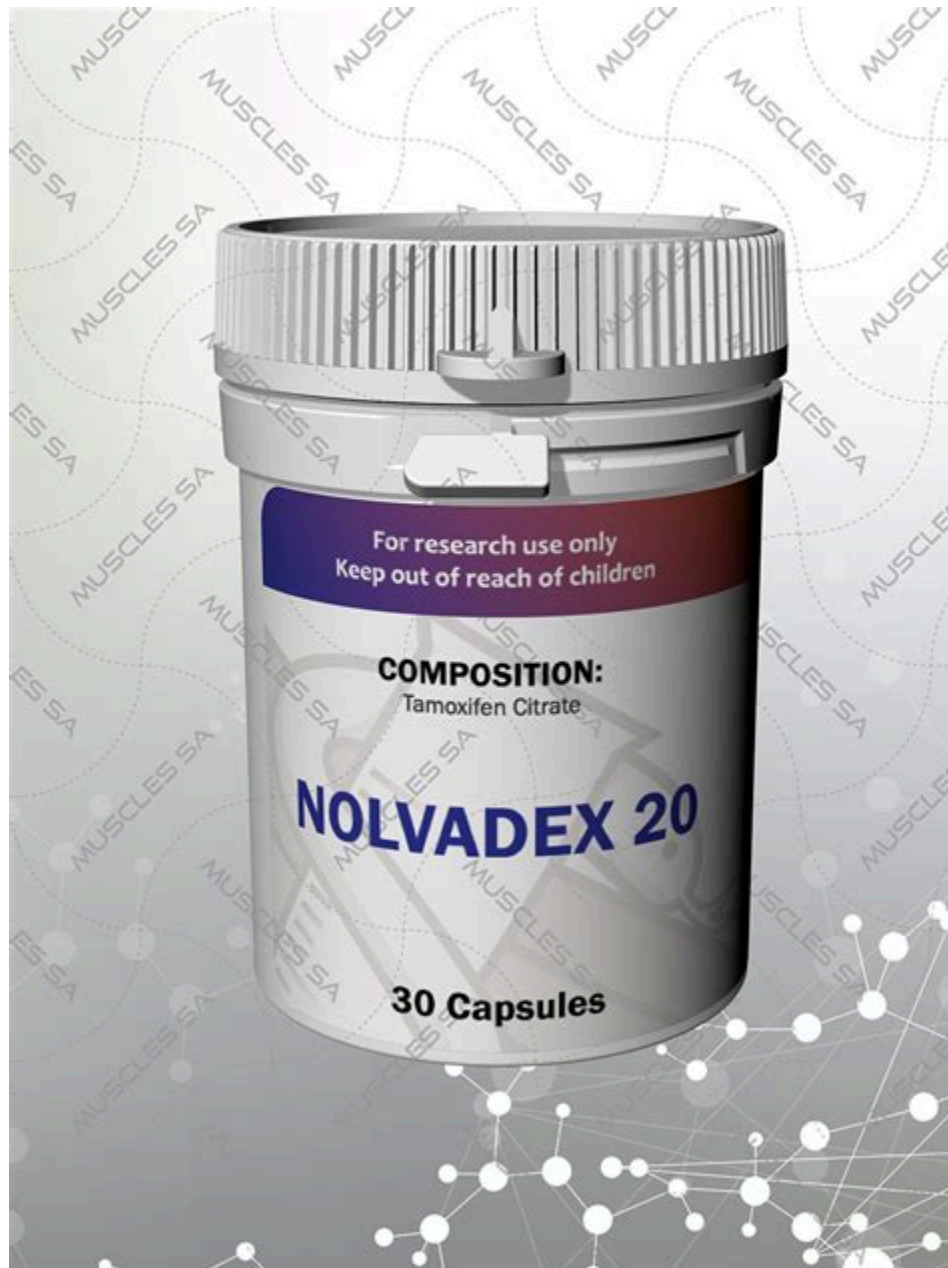
Tamoxifen is a hormonal therapy that blocks the actions of estrogen, a female hormone. It is used to treat some types of breast cancer in men and women and to lower the risk of breast cancer in high-risk women. Learn how to take tamoxifen, what precautions to follow, and what side effects to watch out for.

Nolvadex



Tamoxifen (Nolvadex) is a hormone therapy that lowers the risk of recurrence and death from breast cancer. Learn about the benefits, side effects, and how to get tamoxifen for over 5 years or more. Find resources for financial assistance, insurance coverage, and support from Komen.

Nolvadex - Chemocare



Tamoxifen (Nolvadex® or Soltamox®) is a hormone therapy that treats hormone receptor-positive breast cancer. It can lower the risk of recurrence, invasive and initial breast cancer. Learn how to take tamoxifen, its advantages and disadvantages, and when to call the doctor.

Buy generic Nolvadex / Tamoxifen 10mg online



Compare prices and find coupons for Nolvadex (Tamoxifen), a medication used for breast cancer prevention and treatment. Learn about the benefits, side effects, and alternatives of Nolvadex and other estrogen antagonists.

Nolvadex Oral: Uses, Side Effects, Interactions, Pictures . - WebMD



Tamoxifen is a hormonal therapy that can be used to treat hormone receptor-positive breast cancer. Learn how to get tamoxifen, its uses, side effects, and medicine facts from this web page.

- <https://publiclab.org/notes/print/46073>
- <https://publiclab.org/notes/print/44449>
- <https://publiclab.org/notes/print/42705>