

LONG@R3 IGF-I Liquid



⋈ ⋈ ⋈ VISIT OUR SHOP ⋈ ⋈ ⋈

## LONG® R3 IGF-I Cell Culture Supplement - Repligen



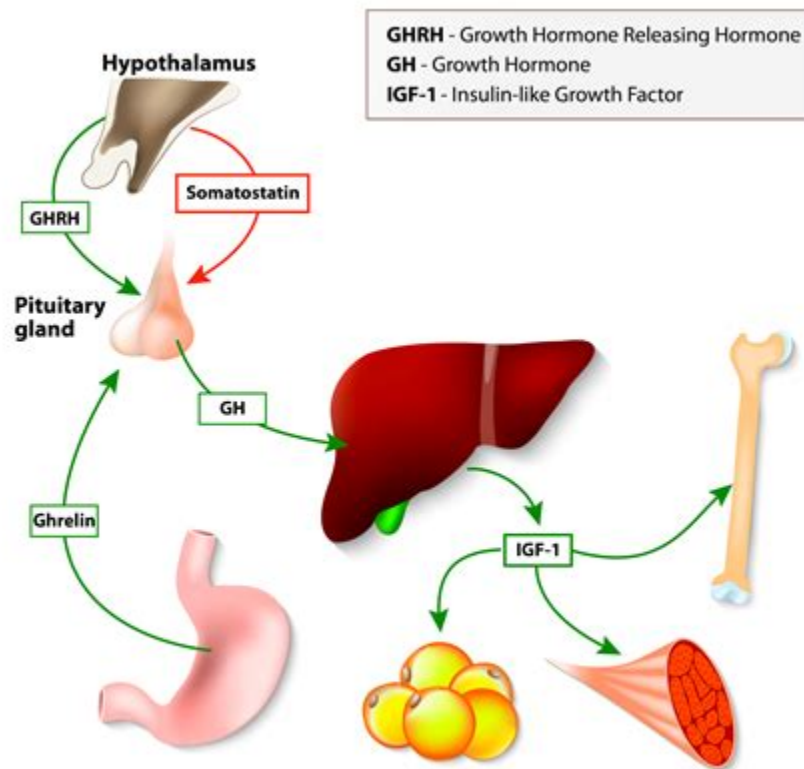
LONG® R3 IGF-I is a recombinant analog of human insulin-like growth factor-I (IGF-I) specifically engineered to enhance cell culture performance. More biologically potent in vitro than either insulin or native IGF-I Ideal for systems utilizing serum-free or low-level serum applications

## Igf-1 Lr3: A Comprehensive Overview Of Its Uses, Benefits, And Dangers .



1. Samples containing LONG®. 3. IGF-I within the standard curve range may be assayed without dilution. 2. Samples containing greater than 40 ng/mL LONG®. 3. IGF-I must be diluted using 1x Reagent A before analysis. Reagent Preparation (During Assay) 1. Make Detection Antibody (Reagent C): Mix Reagent C with 11 mL of PBS Tween 20. 2.

## Insulin-Like Growth Factor-1 (IGF-1) and Its Monitoring in Medical .



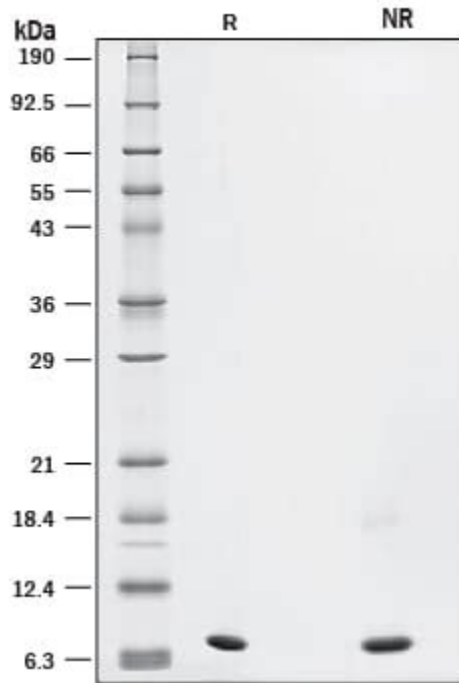
LONG R3 IGF-I is a recombinant analog of insulin-like growth factor containing the complete human IGF-I amino acid sequence with substitution of Arg for Glu3 and a 13 amino acid N-terminal extension peptide.

**IGF-Long R3 - A Powerful Upgrade on IGF-1 that causes an Explosion of .**



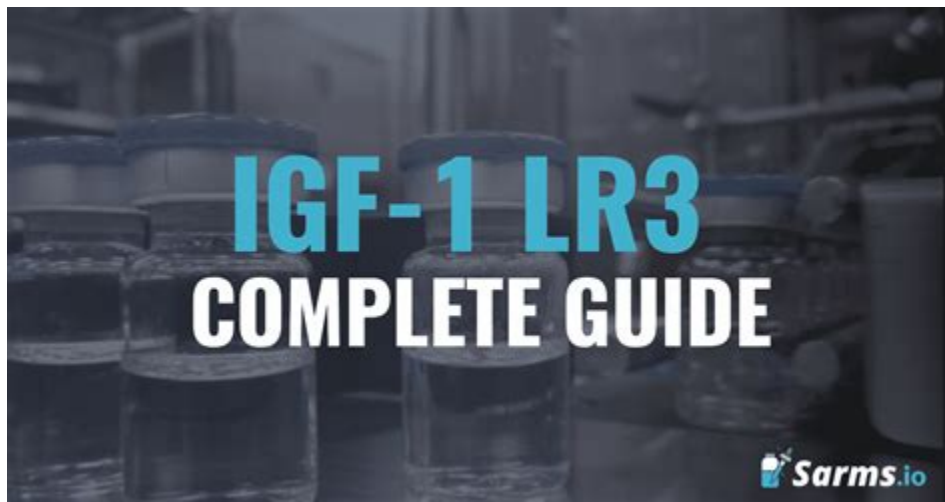
What is IGF-1 LR3? Insulin-like growth factor-1 Long R3 (IGF-1 LR3) is a modified version of the naturally occurring insulin-like growth factor-1 (IGF-1). It is a synthetic peptide hormone that has been shown to have anabolic effects on muscle tissue, meaning it helps promote muscle growth and repair. IGF-1 LR3 differs from regular IGF-1 in .

## Recombinant Human LR3 IGF-I/IGF-1 Protein, CF - R&D Systems



Among the numerous IGFs, IGF-1 Long R3 (LR3) stands out from the rest due to its longer half-life, increased binding to somatomedin (which aids in tissue growth and repair processes), and greater potency. In this comprehensive overview, we discuss its uses, benefits, and potential dangers when used in bodybuilding. What is IGF- LR3?

### IGF-1 LR3 Beginners Guide: Effects, Dose, Results - Sarms. io



Reviews Summary Product Datasheets Carrier Free Data Images Reconstitution Calculator Background Related Research Areas Recombinant Human LR3 IGF-I/IGF-1 GMP Protein, CF Summary Product Specifications Purity >95%, by SDS-PAGE visualized with Silver Staining and quantitative

densitometry by Coomassie® Blue Staining.

**IGF-1 lr3 long R3 muscle building, hair growth, tissue repair growth .**



For long term storage, it is recommended to store desiccated below  $-20^{\circ}\text{C}$  in a manual defrost freezer. Following reconstitution, the protein may be stored for 2 weeks under sterile conditions at  $-20^{\circ}\text{C}$ . For long term storage, it is recommended to make appropriate aliquots and store at  $-80^{\circ}\text{C}$ . Avoid repeated freeze-thaw cycles.



## IGF-1 LR3 Review for Bodybuilding: Dosage, Sides Effects, Dangers



Long-R3 IGF-1 used in CLINICAL RESEARCH: Long-R3 IGF-1 (IGF1-LR3) plays an important part in childhood growth and continues to have results in adults. It is made in the human body and is at ideal levels during puberty. In most studies, the maximum active length for research studies Long-R3 IGF-1 (IGF1-LR3) is 50 days on also 20-40 days off. .

## IGF-1 LR3 Dosage Calculator and Chart | A-Z Guide - Peptides



Long R3 IGF-I (LR3 IGF-I) is a 9.2 kDa synthetic analog of IGF-I that is generated by modifying the aa sequence for mature human IGF-I. These modifications include the substitution of an Arg for Glu at position 3 of the mature IGF-1 sequence and the addition of a thirteen aa N-terminal extension, which is derived from methionyl porcine Growth .



## LONG® R<sup>3</sup> IGF-I - Repligen



LONG®R<sup>3</sup>IGF-I, an analogue of human insulin-like growth factor I (IGF-I), is a highly potent & effective animal-free recombinant growth factor specifically engineered for use in industrial cell culture.

## PDF LONG®R<sup>3</sup> IGF-I ELISA Kit (9547-1) - Repligen



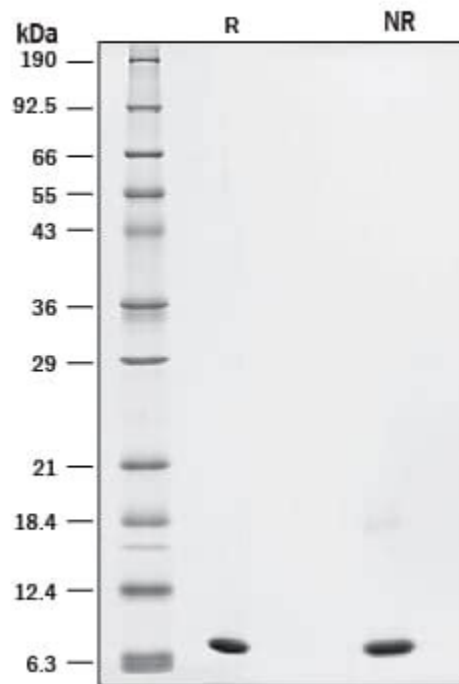
Here, we report that human IGF-1 and its analog Long R3 IGF-1 (LR3 IGF-1) are recombinant expressed and produced in the *Pichia pastoris* (*P. pastoris*) expression system through being fused with highly expressed xylanase XynCDBFV.

## IGF-1 LR3 - Wikipedia



IGF-1 LR3 (insulin-like growth factor-1 long arginine 3) is a synthetically modified derivative of insulin-like growth factor-1, which is produced in the liver in response to growth hormone endocrine stimulus.

## Recombinant Human LR3 IGF-I/IGF-1 GMP Protein, CF - R&D Systems



IGF-1 LR3 (IGF-1 LONG R3) is taken by injecting intramuscularly i. e. injecting 20mcg into one bicep and 20mcg into the other. Duration: The course length is usually 6 weeks but you can go up to 90 days. Dilution: Long R3 IGF-1, equivalent to a 1mg/ml = 1000 mcg vial, it is best prepared by using 1ml or 2ml of acetic acid

## PDF LONG R3 IGF-1, human (I1271) - Datasheet - MilliporeSigma



Key Takeaways IGF1 LR3 is a lengthened and more stable version of IGF1. It has a lower binding affinity with IGF Binding proteins. It can help with building muscle and losing fat. Other benefits include lowering inflammation, and nutrient partitioning. Not as strong as HGH, but worth the money in the right scenario.

## IGF-1 LR3 - Optimize Wellness at Physicians Rejuvenation Centers



Long arginine 3-IGF-1, abbreviated as IGF-1 LR3 or LR3-IGF-1, is a synthetic protein and lengthened analogue of human insulin-like growth factor 1 (IGF-1).

### IGF-1 and Long IGF-1 LR3 Is There a Difference? US Peptides Discusses



1. Introduction 1. 1. IGF-1: Structure, Function and Mode of Action Insulin-like growth factor-1 (IGF-1) is a 70 amino-acid single chain peptide with a molecular weight of 7.6 kDa.

## **LONG® R<sup>3</sup> IGF-I - Repligen**



IGF-1 LR3 offers you the chance to make your physique and training goals a reality. This potent peptide delivers results, but it's only suitable for advanced researchers. Going overboard with the use of this peptide has consequences due to its efficacy and efficiency in building large amounts of muscle quickly.



## LONG®R3 IGF-I Liquid - Repligen



LONG®R3 IGF-I (LONG R3) is 200 times more potent and two times more stable in cell culture than insulin. SAFC® is the exclusive worldwide distributor of LONG®R3 IGF-I for industrial cell culture applications.

## Recombinant Human IGF1 long R3 | RayBiotech



IGF-1 Long R3, or IGF-1 LR3, is a form of IGF that has been chemically altered with changed amino acids. It consists of 83 amino acids with a substitution of Arg (R) for the Glu (E) at position.

# Recombinant expression of IGF-1 and LR3 IGF-1 fused with . - Springer



**BIOTECH**  
PEPTIDES

# IGF-1 LR3

Store at -20C to 4C

**1MG**



FOR RESEARCH ONLY

IGF-1 Long R3 is a chemically altered version of IGF-1 that's designed to be more powerful. This peptide features 83 amino acid chains, with Arg (R) in place of Glu (E) at position three, which is where the "R3" comes from.

## **PDF GMP Growth Factor Additive for Cell Culture Manufacturing - MilliporeSigma**



LONG® R3 IGF-I is a recombinant analog of human insulin-like growth factor-I (IGF-I) specifically engineered to enhance cell culture performance. 相比胰岛素或天然IGF-I, 更高的体外生物学效价. Ideal for systems utilizing serum-free or low-level serum applications. Increased cell density, higher viability and extended culture .

- <https://player.soundon.fm/p/2e628a73-bdfa-4666-a880-3c5f717d17b9>
- <https://groups.google.com/g/60ironpumping79/c/XDPQpTBFTtM>
- <https://publiclab.org/notes/print/46646>