



#1 Hi, I have Igf from europHarmacies and I am wondering how to mix this correctly? Do I use only the water from the ampule or is there more to the mix? I read something about acetic acid, but I dont know how to do it. Can anyone please explain to me how to mix this so I can understand? any info is much appreciated! chubbs the patient Registered



🔗🔗🔗 BUY STEROIDS ONLINE 🔗🔗🔗

Reconstituting IGF-1 LR3 - AnabolicMinds



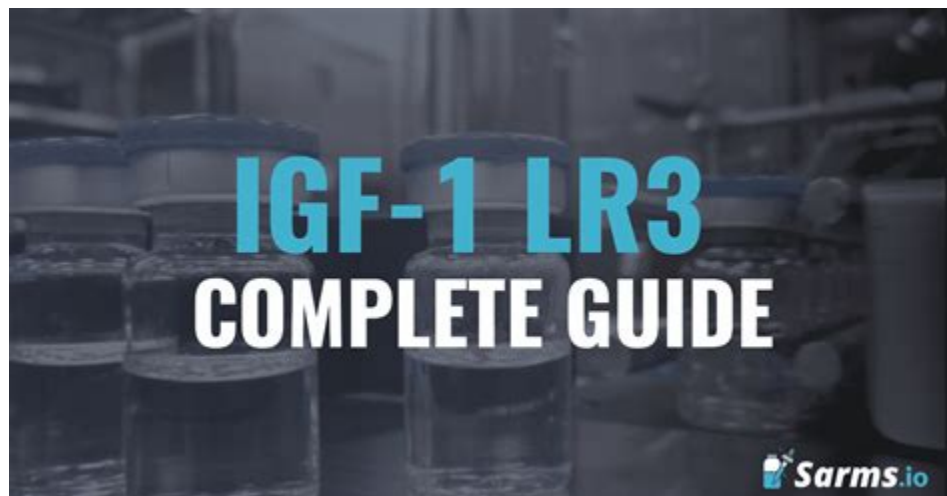
mix 1 ml of igf1 with 2 ml . 6% AA. drip the aa down the side of the igf1 vial. let it mix,do not shake. swirl it around, be gentle. now dilute. use twice the amount of sterile water of IGF1. pull reconstituted IGF1 into pin (est. 50mcg), backload double the IGF1 with sterile water (100mcg). rrect?? a bit confused here boys. . :52: I

How to reconstitute EP IGF LR3 properly? PLEASE HELP



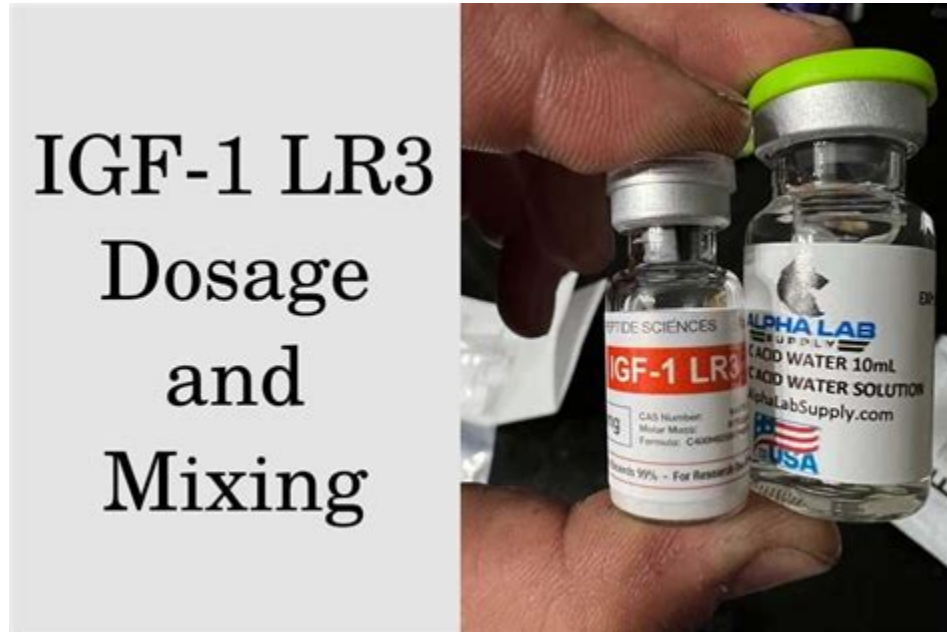
#1 Any help will be greatly appreciated. This is the first time that I have reconstituted anything. I have ordered an IGF-1 LR3 1 mg vial, when I add 1ml of AA with the IGF it will be 1mg/ml or 1000mcg/ml, is that correct? I am confused as to how many ticks on the insulin syringe would equal 40mcg?

IGF-1 LR3 Beginners Guide: Effects, Dose, Results - Sarms. io



11 comments Are you looking to add slabs of muscle to your frame? Do you want to make more progress in four to six weeks than you have in years? IGF-1 LR3 offers you the chance to make your physique and training goals a reality. This potent peptide delivers results, but it's only suitable for advanced researchers.

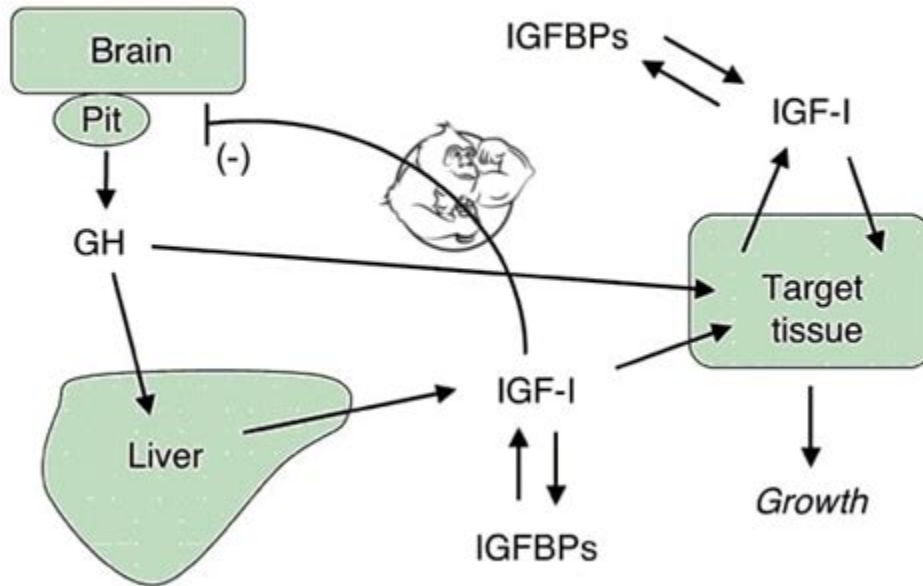
IGF-1 LR3 Mixing, Doseage & Injecting - Professional Muscle



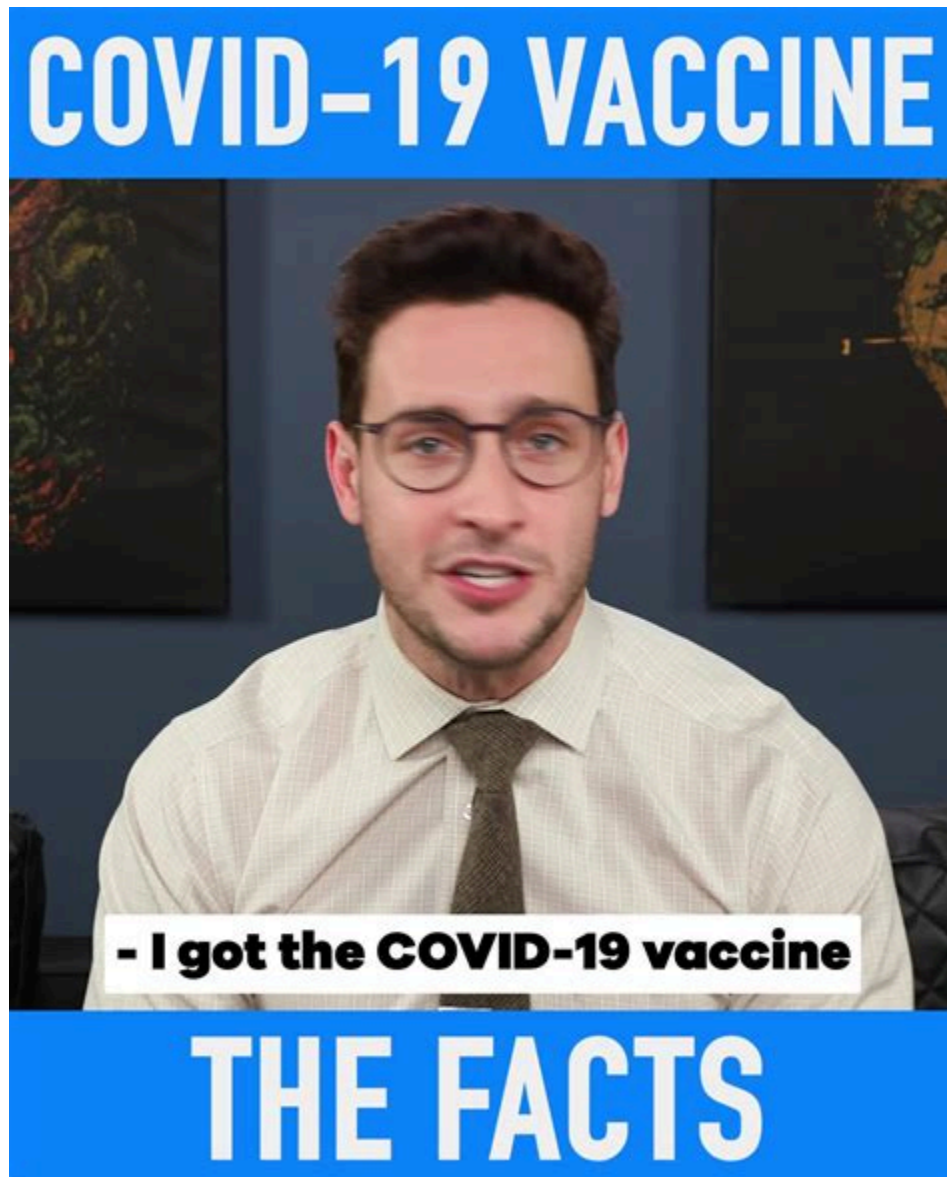
#1 how long will IGF-1 LR3 last after reconstituted in BAC water when frozen. I have 1 mg bottles, taking 50 mcg a day for a 20 day supply. I have first 10 days (half) refrigerated in original bottle and the other 10 days (half) frozen in slin pin. Will freezing it help keep it longer. raysd21 Banned Member
Joined Jan 28, 2014 Messages 1,563

reconstitution of IGF1LR3 or DES?? - evolutionary

The GH/IGF-I system



Cell Culture Supplements LONG R³ IGF-I FAQs Is LONG® R³ IGF-I made to cGMP standards? Yes, LONG® R³ IGF-I 100mL and 50mg sizes* are manufactured according to cGMP standards. The production facility is regularly audited by European and US contract manufacturers and biopharmaceutical companies.



The IGF-1 LR3 is /1mL/1000mcg. According to one source this is the instructions: Reconstituting igf-1LR3 Reconstitution is simply the addition of the 0.6% AA (Acetic Acid) to your lyophilized igf-1. Assumption: 1mg/mL igf-1/AA (1mg igf-1 will be combined with 1mL AA; 1mg igf-1 is the same as 1,000mcg) 1.

Reconstituting igf 1 lr3. The Importance of Reconstituting IGF-1 LR3 .



May 3, 2022 · The IGF1 LR3 is a synthetic peptide that is a lengthened version of the IGF1 peptide hormone. If you're using these dosages and don't notice any effect, you're probably dealing with a bunk product or you've used the wrong water to reconstitute the peptide.

- <https://publiclab.org/notes/print/44209>
- <https://publiclab.org/notes/print/43188>
- <https://www.docdroid.com/DCCWdzy/metabol-cykl-rozpiska-pdf>