



IGF-1 acts on its glycoprotein receptor (IGF1R), a tyrosine kinase receptor, to activate canonical signaling pathways, including: (i) the PI3K (phosphatidylinositol-3 kinase)—AKT1 (serine-threonine-specific protein kinase)—FOXO (forkhead box protein O) and (ii) the RAS—MAPK (mitogen-activated protein kinases)—ERK (extracellular signal regulated).



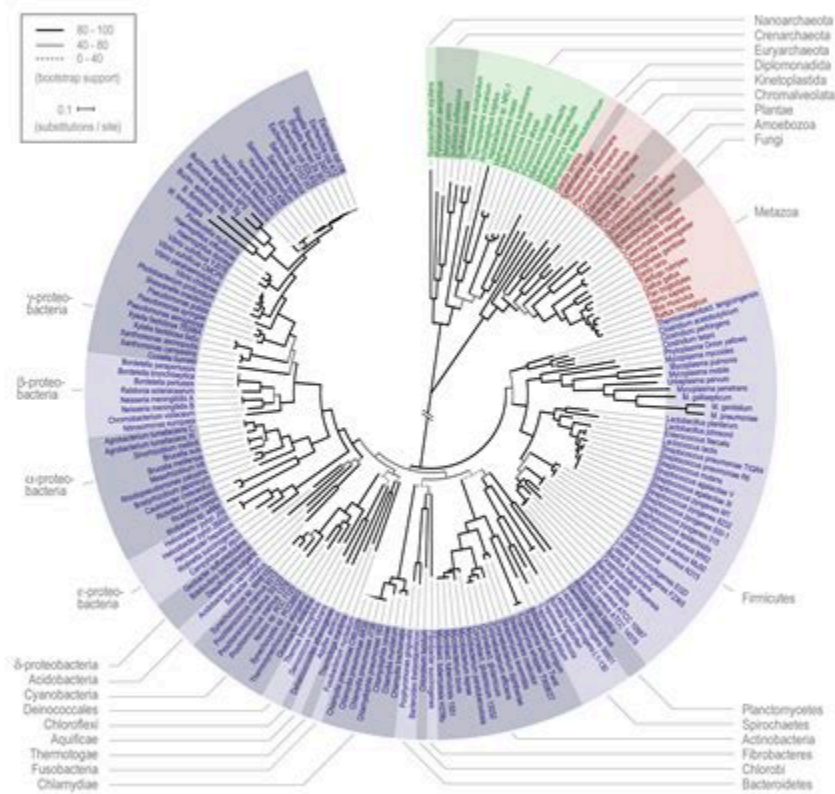
⌘ ⌘ ⌘ VISIT OUR SHOP ⌘ ⌘ ⌘

## The difference between IGF-1 LR3 and IGF-1 DES - World Of Peptides



IGF-1 is a protein that in humans is encoded by the IGF1 gene. [5] [6] IGF-1 consists of 70 amino acids in a single chain with three intramolecular disulfide bridges. IGF-1 has a molecular weight of 7,649 daltons. [7] In dogs, an ancient mutation in IGF1 is the primary cause of the toy phenotype. [8] IGF-1 is produced primarily by the liver.

## IGF-1 vs IGF-1 LR3 vs IGF-1 DES (simplified) | Evolutionary .



Protein DES (1-3) IGF-1 is a truncated version of peptide hormone IGF-1 (insulin-like growth factor 1) in which the tripeptide Gly-Pro-Glu is absent from the N-terminus end of the protein.

## IGF1 Human Protein Recombinant | IBP1 Antigen | ProSpec



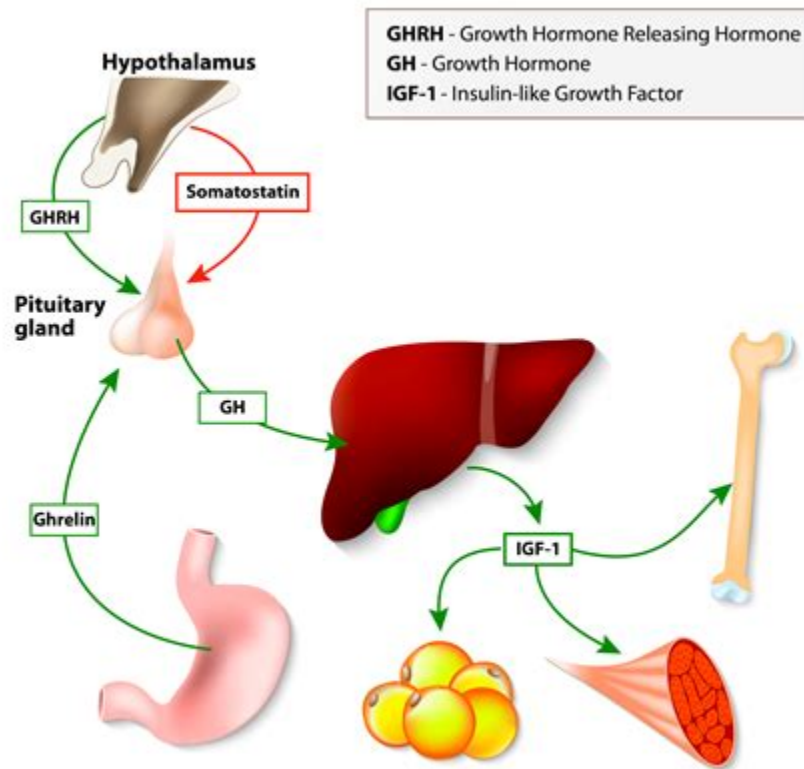
IGF DES stems from Insulin Like Growth Factor 1 or IGF 1 for short. This new variation of the peptide is a shortened analogue of the full IGF 1 peptide. The main difference comes in the form of the first three amino acids. In the case of the shortened peptide, the three amino acids are taken out at the N-terminus.

## Insulin-Like Growth Factor 1 and Related Compounds in the Treatment of .



Lyophilized IGF-I des(1-3) although stable at room temperature for 3 weeks, should be stored desiccated below  $-18^{\circ}\text{C}$ . Upon reconstitution IGF1 des-1-3 should be stored at  $4^{\circ}\text{C}$  between 2-7 days and for future use below  $-18^{\circ}\text{C}$ . For long term storage it is recommended to add a carrier protein (0.1% HSA or BSA). Please prevent freeze-thaw cycles.

## Insulin-Like Growth Factor-1 (IGF-1) and Its Monitoring in Medical .



IGF-1 DES peptide is a less commonly known derivative of insulin-like growth factor (IGF). The shorter half-life of IGF-1 makes it effective yet only for brief periods of time. Consequently, derivatives like IGF-1 DES were created to combat this issue. For this reason, the peptide has transformed into a popular new supplement for muscle growth.

## DES(1-3)IGF1 Research - CanPeptides



des (1-3)IGF-1 is a naturally occurring, endogenous protein, as well as drug, and truncated analogue of insulin-like growth factor 1 (IGF-1). [1] [2] [3] [4] des (1-3)IGF-1 lacks the first three amino acids at the N-terminus of IGF-1 (for a total of 67 amino acids, relative to the 70 of IGF-1). [5]

# **IGF-1 DES Peptide Review (2023): Benefits, Results, Dose, & More**





**BIOTECH**  
PEPTIDES

**IGF-1 DES**

**1MG**

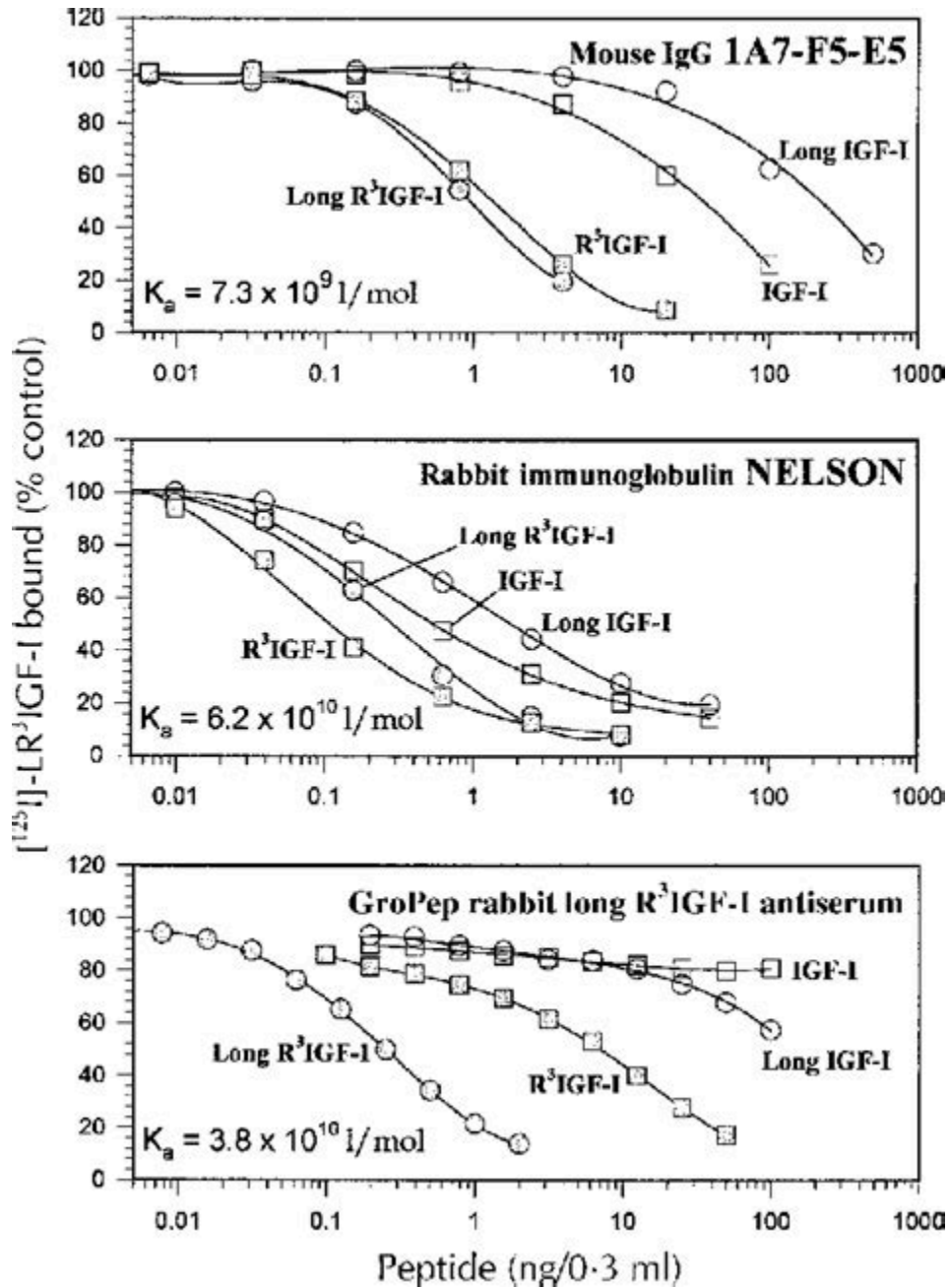
MADE IN USA



FOR RESEARCH ONLY  
PURITY > 99%

IGF-1 DES, also known as insulin-like growth factor 1 DES, is a truncated version (splice variant) of IGF-1, a hormone produced by the human liver. IGF-1 DES itself is present in the brain and promotes cell proliferation and differentiation.

**Detection of Long R<sup>3</sup>-IGF-I, Des(1-3)-IGF-I, and R<sup>3</sup>-IGF-I using .**



IGF-1 is a polypeptide, also known as a protein hormone, with a similar chemical structure to the natural hormone insulin produced in the pancreas and liver. The body naturally produces IGF-1 in the liver, stimulated by the release of human growth hormone ( HGH ). Essentially, HGH acts as a precursor hormone to the development of IGF-1.

## des(1-3)IGF-1 - Wikipedia



IGF-1 (Insulin-like growth factor) is an endocrine hormone that is produced in the liver. The production of IGF-1 is increased in the presence of growth hormone. . IGF-1 DES. DES IGF-1 can be dosed at 50-150mcg multiple times a day (prior to training) into specific target areas. since DES has such a short half life (20-30 minutes) .

## IGF DES for Localized Muscle Growth | Paradigm Peptides



**SPECTRE LABS**

AXIOMPEPT  
IGF DES 1mg  
www.researchpeptides.co  
Research Purposes Only Not For

# IGF DES

**ORDER YOURS NOW!**  
WWW.SPECTRELABS.ORG

des IGF-1 is a naturally occurring, endogenous protein, as well as drug, and truncated analogue of insulin-like growth factor 1 . des IGF-1 lacks the first three amino acids at the N-terminus of IGF-1 . As a result of this difference, it has considerably reduced binding to the insulin-like growth factor-binding proteins and enhanced potency relative to IGF-1.

## IGF-1 DES (1-3) Peptide for Sale - Factory Wholesale Price



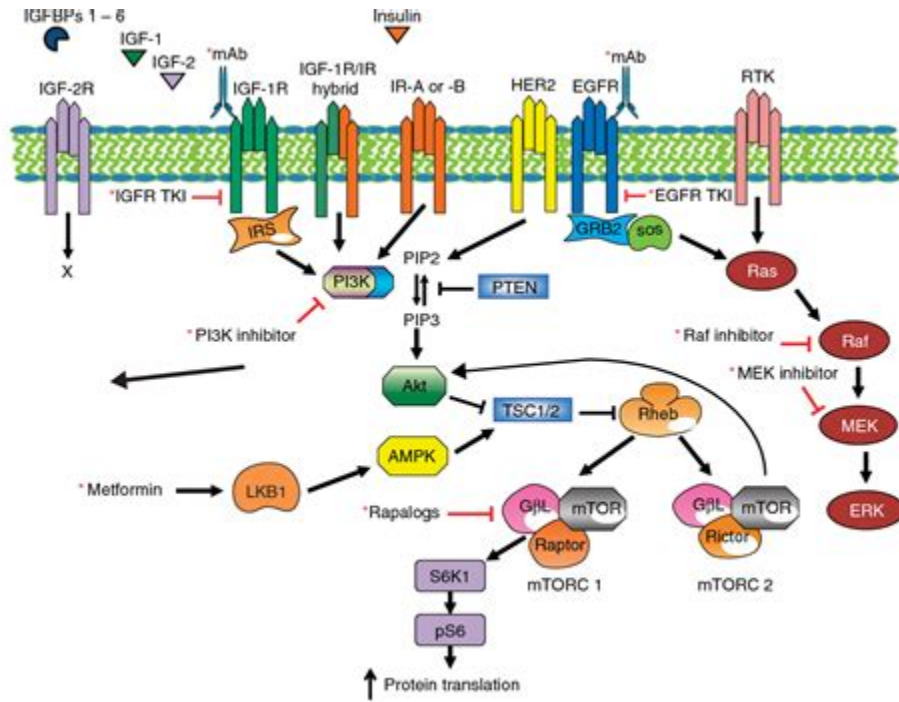
Insulin-like growth factor-1 (IGF-1) is a 70 amino-acid single chain peptide with a molecular weight of 7.6 kDa. IGF-1 contains three disulphide bridges, between amino acids 6 and 48, 18 and 61 and 47 and 52, which create the tertiary structure critical for optimum binding to the IGF-1R ( Figure 1 ).

## IGF1-DES 1,3 1MG - Amino Pure Labs



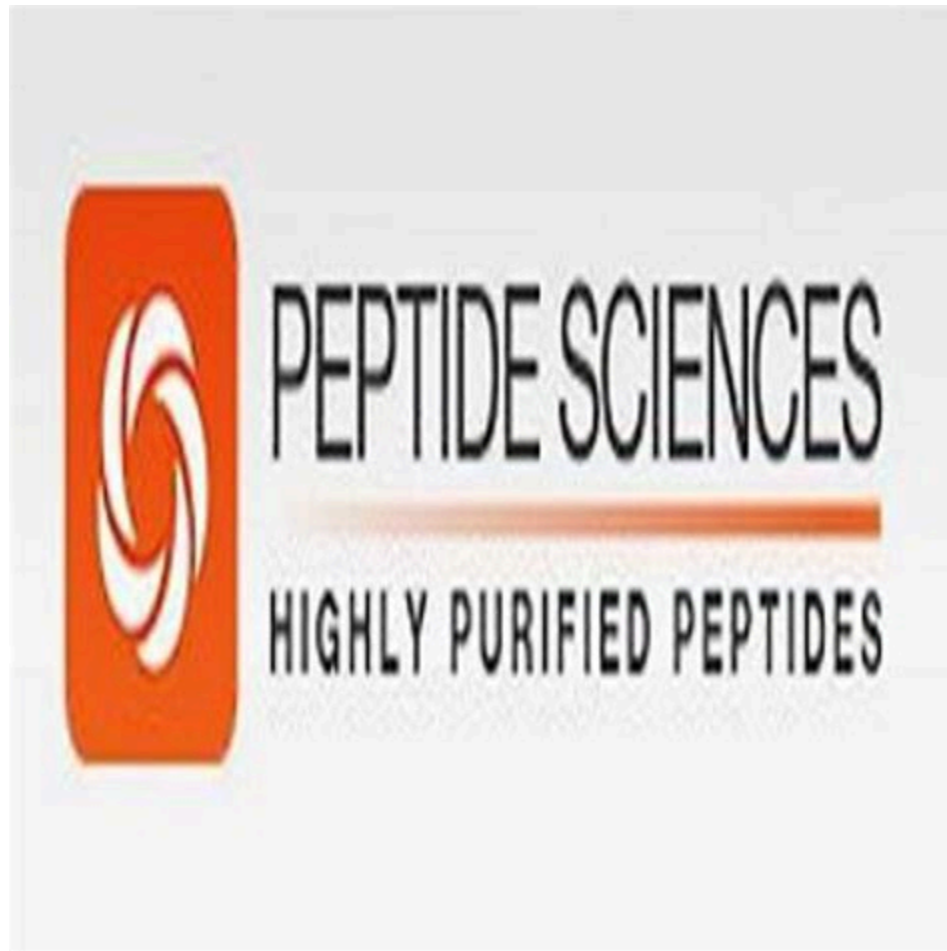
IGF-1 DES Is More Potent Than IGF-1. IGF-1 DES is lacking just three amino acids from its N-terminal end, but that subtle change makes a big difference. Research shows that IGF-1 DES does not bind very well to IGF-1 binding proteins (IGFBPs) found in the blood and in various tissues throughout the body. The result is that more of the peptide is available for binding to important receptors and .

## Insulin-like growth factor-1 (IGF-1) - Evolutionary



Naturally produced by the liver, IGF-1 is a hormone similar in structure to that of insulin, hence its name. During childhood it is one of the primary hormones responsible for growth and remains a powerful precursor to cell growth in adults - something bodybuilders and athletes have naturally taken an interest in!

**Buy IGF1 DES 1mg | 99% Purity (USA Made) | Peptide Sciences**



Abstract Insulin-like growth factor-I (IGF-I) and its analogs LongR 3 -IGF-I, Des (1-3)-IGF-I, and R 3 -IGF-I are prohibited substances in sport. Although they were never approved for use in humans, they are readily available as black market products for bodybuilding and can be used to enhance physical performance.

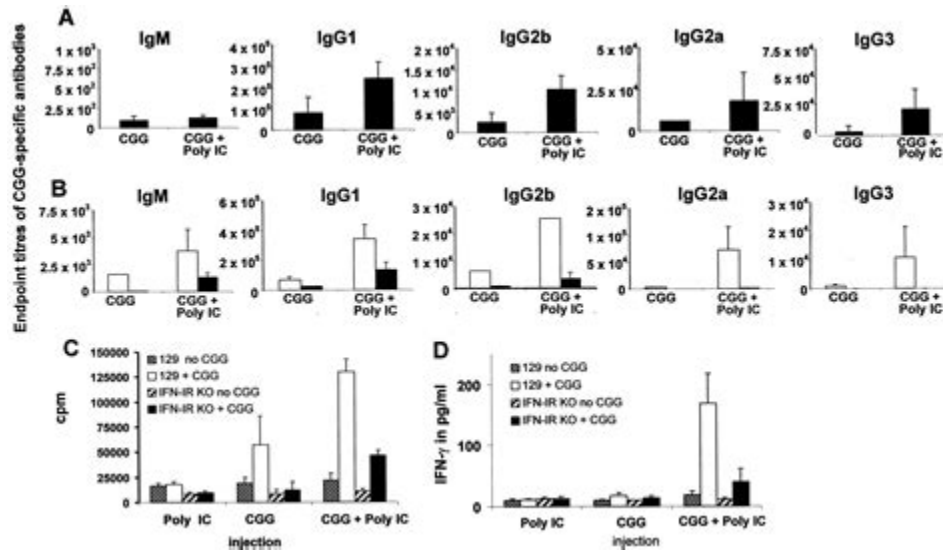


## Des(1-3)IGF-1 - Wikiwand



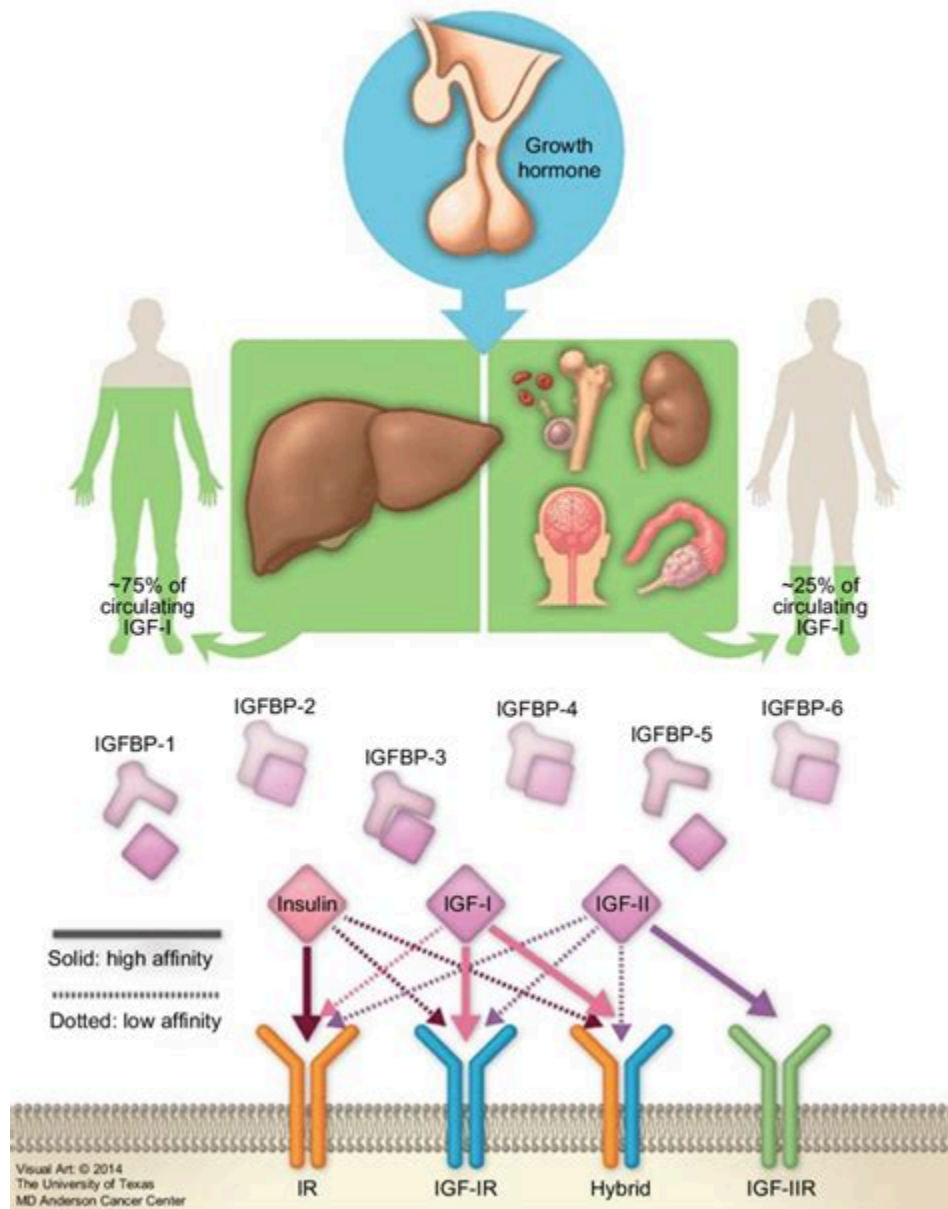
Joined. Oct 23, 2009. Messages. 138. Nov 21, 2009. #3. Well I just got 2 bottles for only \$75 stuff is usually \$150 each but there was a huge one time sale. Anyway I will be logging the effects of my research on IGF-1 DES 1,3. Very soon, as soon as the damn BAC Water gets here!

**Des (1-3) IGF-I potently enhances differentiated cell growth in .**



Molecular Makeup IGF-1: Contains a 70 molecule long chain of amino acids IGF-1 LR3: Contains an 83 molecule long chain of amino acids. 13 additional amino acids were added to the N terminus along with an alteration at the 3rd position where the Glutamic acid molecule is replaced by Arginine. (I'll get to why that matters in a minute). IGF-1 DES:

## Insulin-like growth factor 1 - Wikipedia



Why You Should Take: IGF-1 DES The Benefits In vitro studies exhibit that at equal doses, DES (1-3) IGF is ten instances more potent than IGF-1 at stimulating hypertrophy and proliferation in cultured cells. It is possibly generated thru post-translational amendment inside the collection of circulating mature IGF-1 thru protease action.

## Beyond Your Limits: IGF-1 DES - suppreviewers



What Is IGF-1 DES (1-3) DES (1-3) IGF-1 is a truncated variant of IGF-1, and the tripeptide Gly-Pro-Glu does not exist at the N-terminus. It is extracted from human brain, bovine colostrum and pig uterus, and is the prototype of a parent compound called insulin-like growth factor IGF-1.

## **IGF-1 Peptide: Benefits, Uses, Dosage - Muscle and Brawn**



**BIOTECH**  
PEPTIDES

**IGF-1 DES**

**1MG**

MADE IN USA



FOR RESEARCH ONLY  
PURITY > 99%

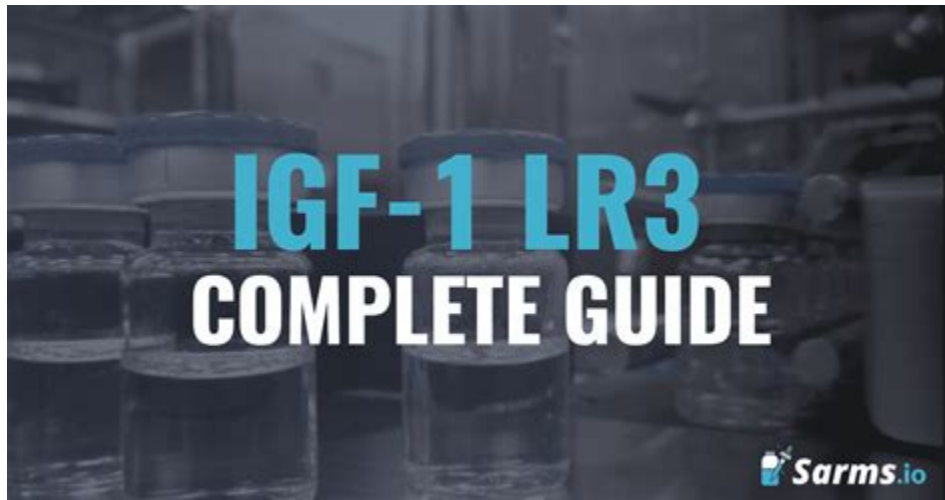
Synonyms: Insulin-like growth factor 1, des-(1-3)-, Des(1-3) IGF-1, 4-70-insulin-like growth factor 1. IGF-1 DES Research. IGF-1 DES Is More Potent Than IGF-1. IGF-1 DES is lacking just three amino acids from its N-terminal end, but that subtle change makes a big difference. Research shows that IGF-1 DES does not bind very well to IGF-1 binding .

## IGF-1 DES Dosage Calculator and Chart | A-Z Guide - Peptides



Des (1-3), or truncated, IGF-I is a potent analog of IGF-I isolated from rat and human brain.

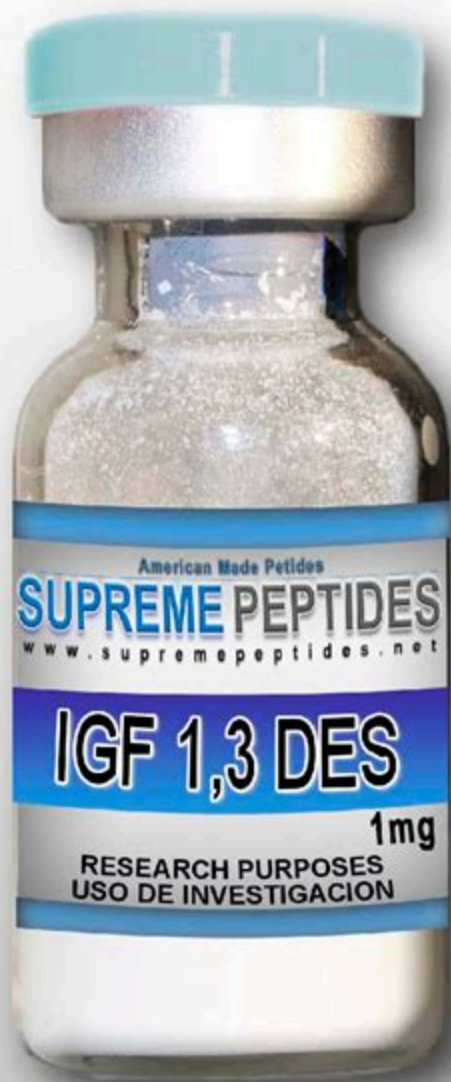
## IGF-1 LR3 Beginners Guide: Effects, Dose, Results - Sarms.io



A daily dosage of 20-50 mcg of IGF-1 LR3 is suggested by the physicians for a cycle of 6 to 7 weeks as desensitization may follow after that. IGF-1 vs IGF-1 DES. IGF-1 DES is rather a shorter derivative of IGF-1 but approximately 5 times more potent than the parent compound.



## **Human Des [1-3] IGF-I - GroPep Bioreagents**



American Made Peptides

**SUPREME PEPTIDES**

[www.supremepeptides.net](http://www.supremepeptides.net)

**IGF 1,3 DES**

**1mg**

RESEARCH PURPOSES  
USO DE INVESTIGACION

Product code DU100 Human Des [1-3]insulin-like Growth Factor-I (IGF-I) is a 67 amino acid analogue of human IGF-I lacking the N-terminal tripeptide Gly-Pro-Glu. Human Des [1-3]IGF-I is more potent than IGF-I in vitro and in vivo.

- [https://hub.docker.com/r/borjafedotovyp/anabolic\\_steroids\\_oral\\_pills](https://hub.docker.com/r/borjafedotovyp/anabolic_steroids_oral_pills)
- <https://colab.research.google.com/drive/16fg-buWzoHJmMNOetextB6TmB3VdvTqT>
- [https://groups.google.com/g/flex-virtuosos/c/pl\\_axmT1qKA](https://groups.google.com/g/flex-virtuosos/c/pl_axmT1qKA)